





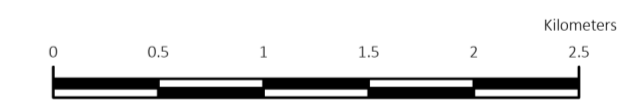


Adopted March 2022

Supplementary Mapping Booklet

-  Boundary of Section 49 Supplementary Development Contribution Scheme Glenamuck Road
-  Boundary of Section 49 Supplementary Development Contribution Scheme Luas B1
-  Luas Line
-  Luas Stations
-  Kiltiernan / Glenamuck Distributor Road
-  County Boundary



© - Ordnance Survey Ireland, 2022

Planning Department

M Henchy  
 Director of Planning

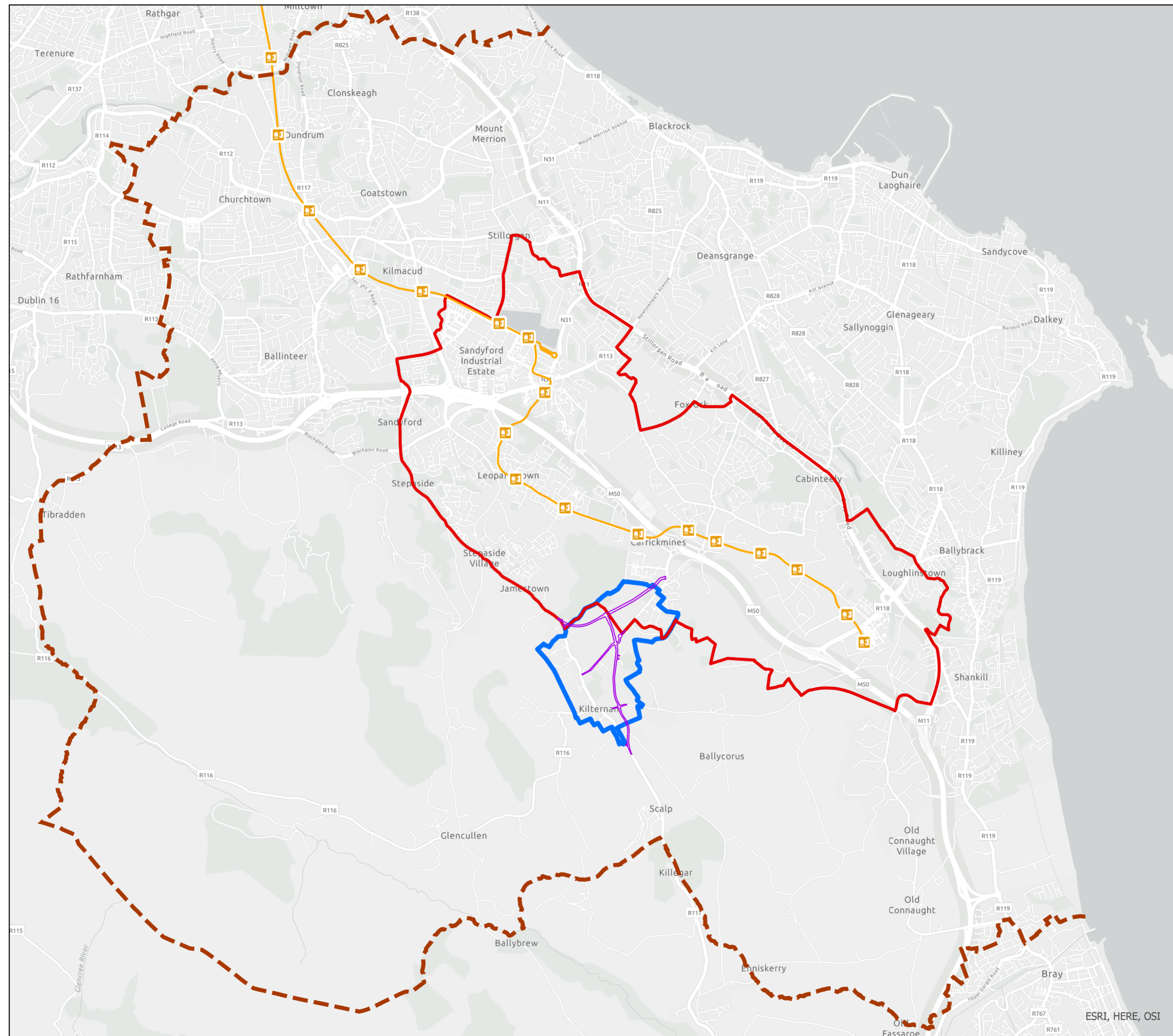


Section 49 Supplementary Development Contribution Scheme

Senior Planner: L. McGauran Chief Technician:

Prepared By: L. McGauran Drawn By: M. Hennessy

Date: March 2022 Scale: 1:36,000 Map No. T1



ESRI, HERE, OSI