

Mapping Notes

1. When printing this map, colours may vary depending on type of printer used. Please refer to dlr website for definitive colours.

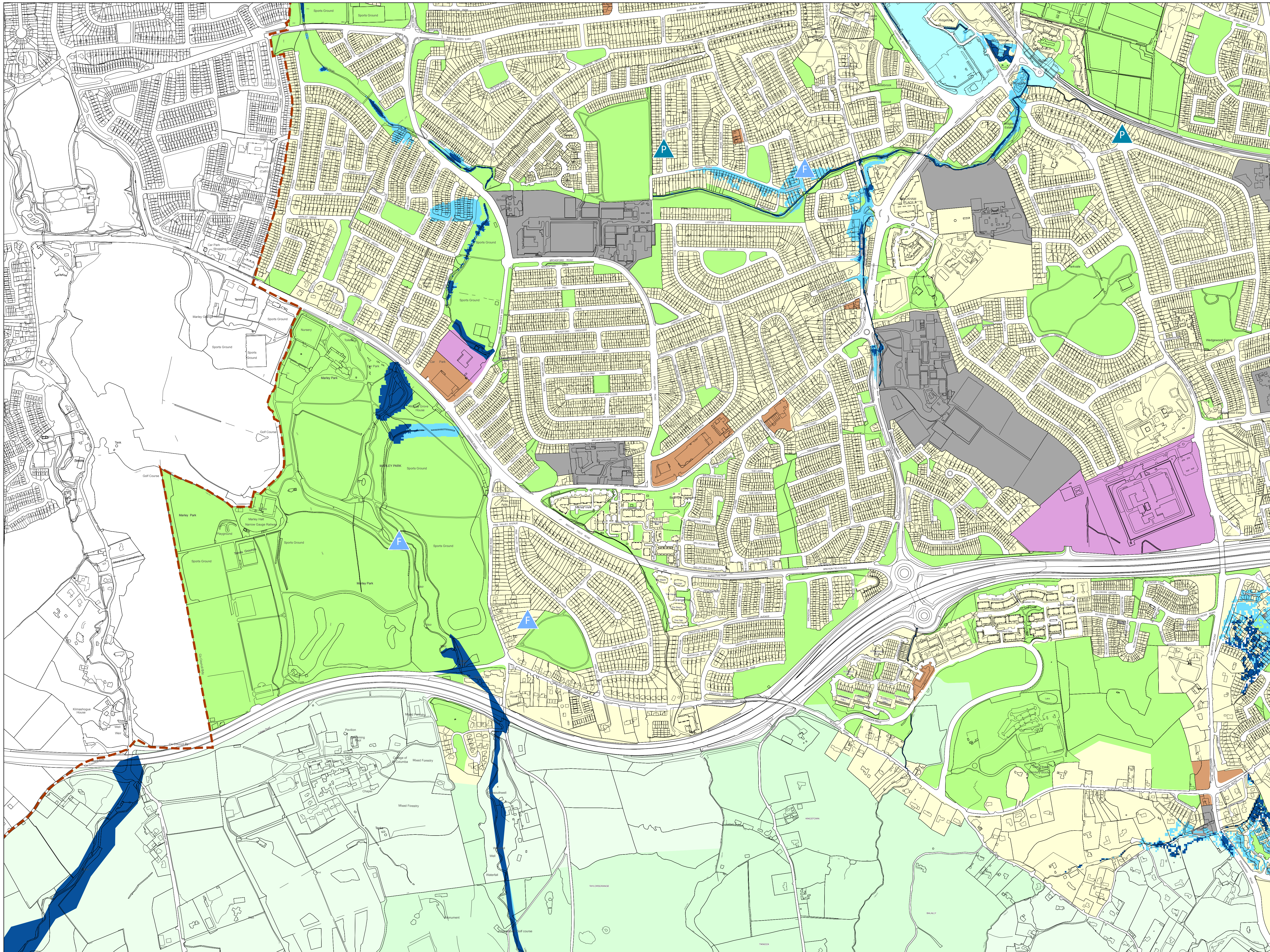
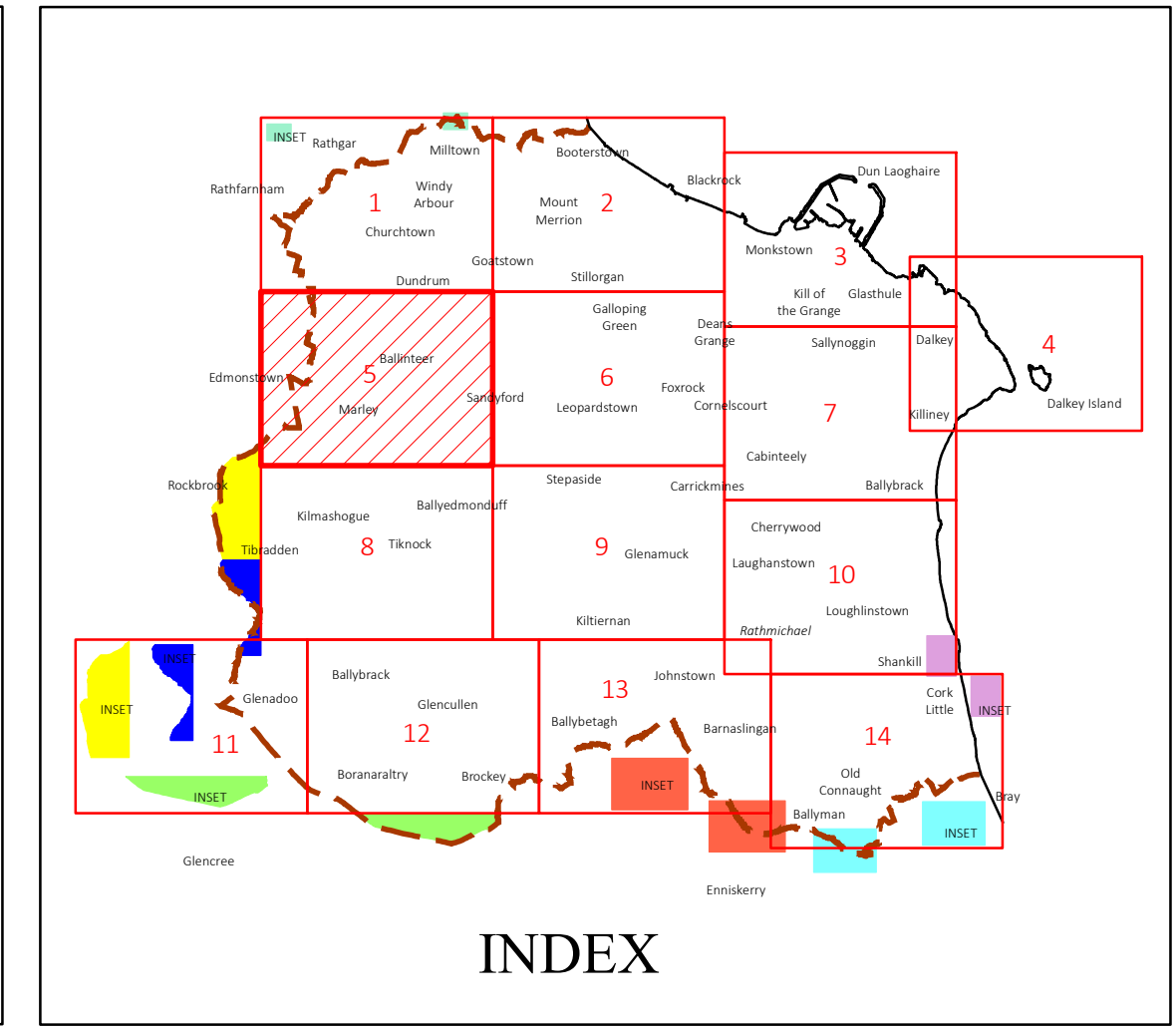
Flood Zone Map

COMHAIRLE CHONTAE DHÚN LAOGHAIRE-RÁTH AN DÚIN

DÚN LAOGHAIRE-RATHDOWN COUNTY COUNCIL

COUNTY DEVELOPMENT PLAN 2022-2028

Draft County Development Plan January 2021

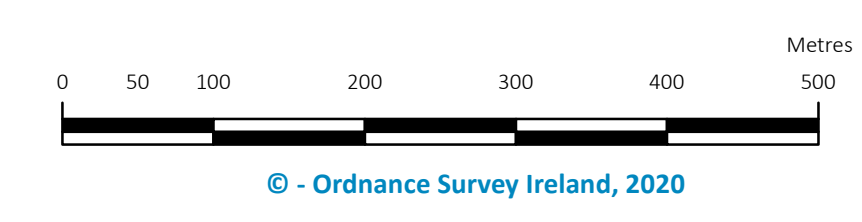


Land Use Zonings

Objective A	To provide residential development and/or protect and improve residential amenity.	[Yellow]
Objective A1	To provide for new residential communities and Sustainable Neighbourhood Infrastructure in accordance with approved local area plans.	[Light Yellow]
Objective A2	To provide for the creation of sustainable residential neighbourhoods and preserve and protect residential amenity.	[Light Green]
Objective B	To protect and improve rural amenity and to provide for the development of agriculture.	[Light Green]
Objective DC	To protect, provide for and/or improve mixed-use district centre facilities.	[Red]
Objective E	To provide for economic development and employment.	[Purple]
Objective F	To preserve and provide for open space with ancillary active recreational amenities.	[Light Green]
Objective GB	To protect and improve high amenity areas.	[Light Green]
Objective G	To protect and enhance the open nature of lands between urban areas.	[Light Green]
Objective I1W	To improve and provide for low density warehousing/light industrial warehousing uses	[Blue]
Objective MIC	To consolidate and complete the development of the mixed use inner core to enhance and reinforce sustainable development.	[Orange]
Objective MDC	To provide for a mix of uses which complements the inner core, but with less retail and residential and more emphasis on employment and services.	[Red]
Objective MTC	To protect, provide for and/or improve major town centre facilities.	[Cyan]
Objective NC	To protect, provide for and/or improve mixed-use neighbourhood centre facilities.	[Orange]
Objective OE	To provide for office and enterprise development.	[Light Blue]
Objective TU	To facilitate, support and enhance the development of third level education institutions.	[Grey]
Objective W	To provide for waterfront development and harbour related uses.	[Green]
Objective SNI	To protect, improve and encourage the provision of sustainable neighbourhood infrastructure	[Grey]

Areas of Flood Risk Concern

Fluvial - Surface Water	[Blue Triangle with F]
Pluvial - Surface Water	[Blue Triangle with P]
Pluvial - Foul	[Green Triangle with P]
Flood Zone A	[Dark Blue]
Flood Zone B	[Light Blue]
County Boundary	[Dashed Red Line]
Boundary of Adopted Cherrywood Planning Scheme	[Red Box]



Director of Planning: M Henchy
Senior Planner: L McGauran