

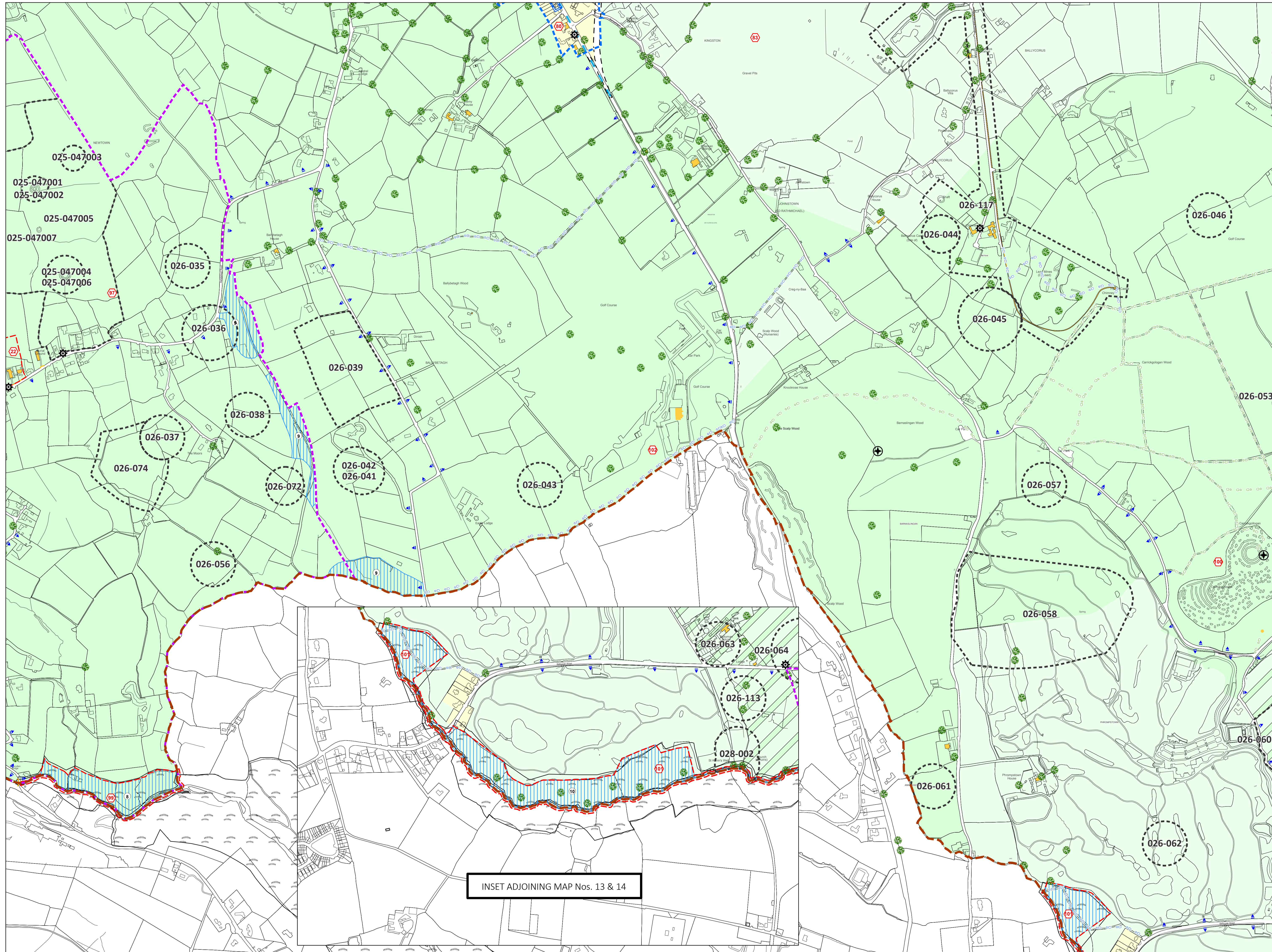
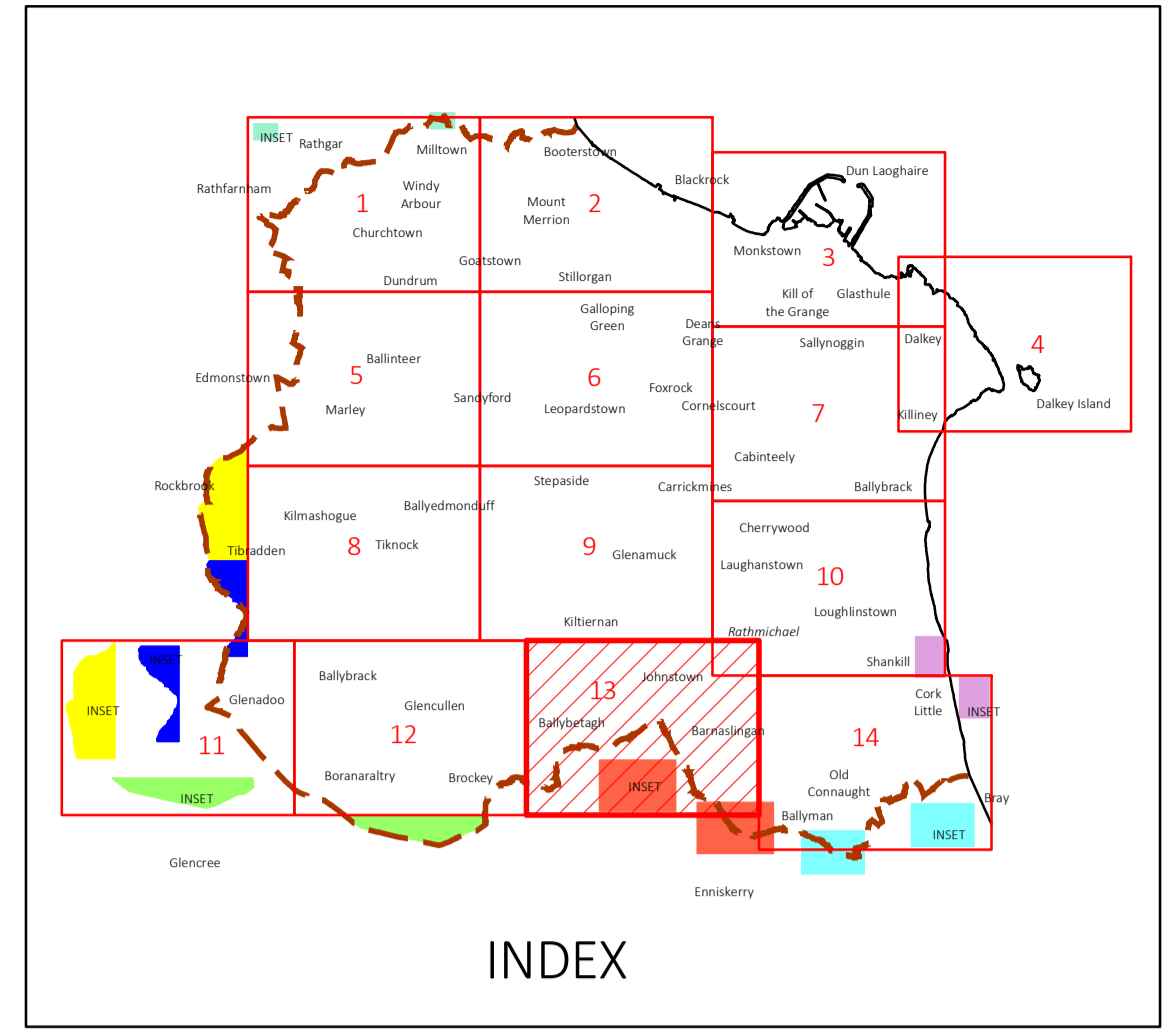
- Mapping Notes**
- The lines of the Road Proposals shown are diagrammatic only and may be subject to change.
 - The provisional alignment of the S25/National East Coast Trail Cycle Route is diagrammatic only and may be subject to change.
 - The boundaries of any proposed Local Area Plans are indicative only and may be subject to change.
 - The Core Bus Corridors may be subject to change. Proposed Bus Priority Routes may be stood down following the roll out of the Bus Connects Network Redesign.
 - The tree symbols may represent one tree or a group of trees which make a contribution to the area.
 - The Proposed Luas Line Extension is a provisional alignment.
 - When printing this map, colours may vary depending on type of printer used. Please refer to dlr website for definitive colours.

COMHAIRLE CHONTAE DHÚN LAOGHAIRE-RÁTH AN DÚIN

DÚN LAOGHAIRE-RATHDOWN COUNTY COUNCIL

COUNTY DEVELOPMENT PLAN 2022-2028

Draft County Development Plan January 2021



Land Use Zonings

Objective A	To provide residential development and/or protect and improve residential amenity.	[Yellow]
Objective A1	To provide for new residential communities and Sustainable Neighbourhood Infrastructure in accordance with approved local area plans.	[Light Yellow]
Objective A2	To provide for the creation of sustainable residential neighbourhoods and preserve and protect residential amenity.	[Light Green]
Objective B	To protect and improve rural amenity and to provide for the development of agriculture.	[Light Green]
Objective DC	To protect, provide for and/or improve mixed-use district centre facilities.	[Red]
Objective E	To provide for economic development and employment.	[Purple]
Objective F	To preserve and provide for open space with ancillary active recreational amenities.	[Light Green]
Objective G	To protect and improve high amenity areas.	[Light Green]
Objective GB	To protect and enhance the open nature of lands between urban areas.	[Light Green]
Objective LIW	To improve and provide for low density warehousing/light industrial warehousing uses	[Blue]
Objective MIC	To consolidate and complete the development of the mixed use inner core to enhance and reinforce sustainable development.	[Orange]
Objective MOC	To provide for a mix of uses which complements the inner core, but with less retail and residential and more emphasis on employment and services.	[Red]
Objective MTC	To protect, provide for and/or improve major town centre facilities.	[Cyan]
Objective NC	To protect, provide for and/or improve mixed-use neighbourhood centre facilities.	[Orange]
Objective OE	To provide for office and enterprise development.	[Light Blue]
Objective TU	To facilitate, support and enhance the development of third level education institutions.	[Grey]
Objective W	To provide for waterfront development and harbour related uses.	[Light Green]
Objective SNI	To protect, improve and encourage the provision of sustainable neighbourhood infrastructure	[Grey]

Other Objectives

6 Year Road Objectives/Traffic Management/Active Travel Upgrades	[Dashed Line]
6 Year Motorway Proposal	[Dashed Line]
Strategic Road Reservation	[Dashed Line]
Long Term Road Objectives/Traffic Management/Active Travel Upgrades	[Dotted Line]
Long Term Motorway Proposal	[Dotted Line]
Proposed Luas Line Extension	[Blue Line]
Core Bus Corridor	[Blue Line]
Proposed Bus Priority Routes	[Blue Line]
Public Right-of-Way	[Blue Line]
Recreation Access Route	[Blue Line]
Wicklow Way	[Blue Line]
Proposed Sutton to Sandycove Walkway/Cycleway as a component part of the National East Coast Trail Cycle Route	[Blue Line]
Protected Structures	[Star Symbol]
Record of Industrial Heritage	[Star Symbol]
Record of Monuments and Places (For Areas of Archaeological Potential)	[Star Symbol]
Strategic Land Reserve	[Star Symbol]
Architectural Conservation Area	[Star Symbol]
Candidate Architectural Conservation Area	[Star Symbol]
Proposed Architectural Conservation Area	[Star Symbol]
Proposed Candidate Architectural Conservation Area	[Star Symbol]
European Sites (SPA and SAC Areas)	[Star Symbol]
Proposed Natural Heritage Areas (pNHA)	[Star Symbol]
To preserve Views	[Star Symbol]
To protect and preserve Trees and Woodlands	[Star Symbol]
Tree Preservation Orders Location	[Star Symbol]
To preserve Prospects	[Star Symbol]
No increase in the number of buildings permissible	[Star Symbol]
To protect and/or provide for a Burial Ground	[Star Symbol]
Boundary of Adopted Cherrywood Planning Scheme	[Star Symbol]
Boundary of Urban Framework Plan	[Star Symbol]
Boundary of lands for which a Local Area Plan will be prepared	[Star Symbol]
Boundary of Local Area Plan	[Star Symbol]
Boundary of Objective Area	[Star Symbol]
Specific Local Objective	[Star Symbol]
To provide accommodation for the Travelling Community	[Star Symbol]
Proposed Education Site	[Star Symbol]
To protect and/or provide for Institutional Use in open lands	[Star Symbol]
Mews Development Acceptable in Principle	[Star Symbol]
County Boundary	[Star Symbol]

0 50 100 200 300 400 500 Metres

© - Ordnance Survey Ireland, 2020