

How do we love our laneways?

A Model for Engagement and Re-imagination



A Brief Overview

A Playful City is working with DLRCC and the local community to develop a co-created vision for Pearse Drive laneway in Sallynoggin and enhance it as a more playful, people-centred place for the community, by the community. The project will be made up of multiple phases, from community visioning all the way to design and execution with each phase involving listening to and collaborating with community members and local partners.

A Model for Engagement and Re-imagination

We are seeking to develop a process to engage and collaborate with community and local stakeholders thereby promoting a bottom up approach for underutilised spaces in Dún Laoghaire-Rathdown. The aim for this project is to create a template for engaging local community in the decision making and design process. To achieve this we will engage with DLR, local community, clubs, schools, institutions and others.



About Us

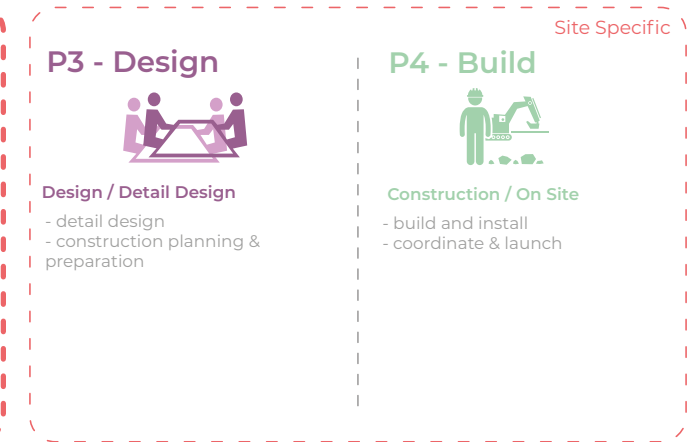
A Playful City is a not for profit organisation, which focuses on creating inclusive, accessible and playful spaces, with and for communities. A Playful City works with the public and private sector to bring this vision to life. The A Playful City team were involved in the award winning Granby Park with DCC, have piloted a NEIC funded Playful Street initiative, leading to a toolkit and national launch, and have co-created many consultation and collaborative approaches leading to playful designs and installations in the public realm.

How?

Learn - Vision & Ideation



Action - Design & Build



• Learn - Phase 1 & 2

We are developing a template that can be applied to a variety of projects creating a framework for learning from key stakeholders, the community. This framework will both measure and test ideas in a low risk environment, creating opportunities for consultation to inform decision making.

This stage will be the beginning of an ongoing conversation involving a variety of stakeholders. The goal here is to understand what is the most appropriate intervention for this area and take on board concerns as part of an inclusive, collaborative vision, rooted in local experience. Test events aim to minimise the increasingly common risk of objection for re-imagining. The project has more potential to be welcomed and adopted by the community, be more resilient and also have significant long term benefits.

It is envisioned that this stage can be repeated informing the investment and direction for site specific projects to be refined and produced in phases 3 & 4.

• Action - Phase 3 & 4

Depending on the results of phase 1 & 2, phases 3 & 4 could take many forms with varied budgets and expectations. The learnings from the first

two phases will allow us to have an even better chance of success in creating attractive, inclusive and accessible spaces based on the extensive engagement undertaken.

Review



Assess & Evaluate

- Review impact and assess use/function with IADT
- Report & present
- Build upon the feedback, improve, launch and repeat

As this project develops each phase will be reviewed with the team, community and stakeholders to see what could have been done better and improved to develop a successful template that continues to develop if further sites are identified for this scheme. Assessment categories have been established to review and assess the project;

- **Multi-Disciplinary Collaboration**
- **A Space for All**
- **Sustainable Maintenance & Management**
- **Longevity**
- **Engaged Community**
- **Building Capacity**

How?

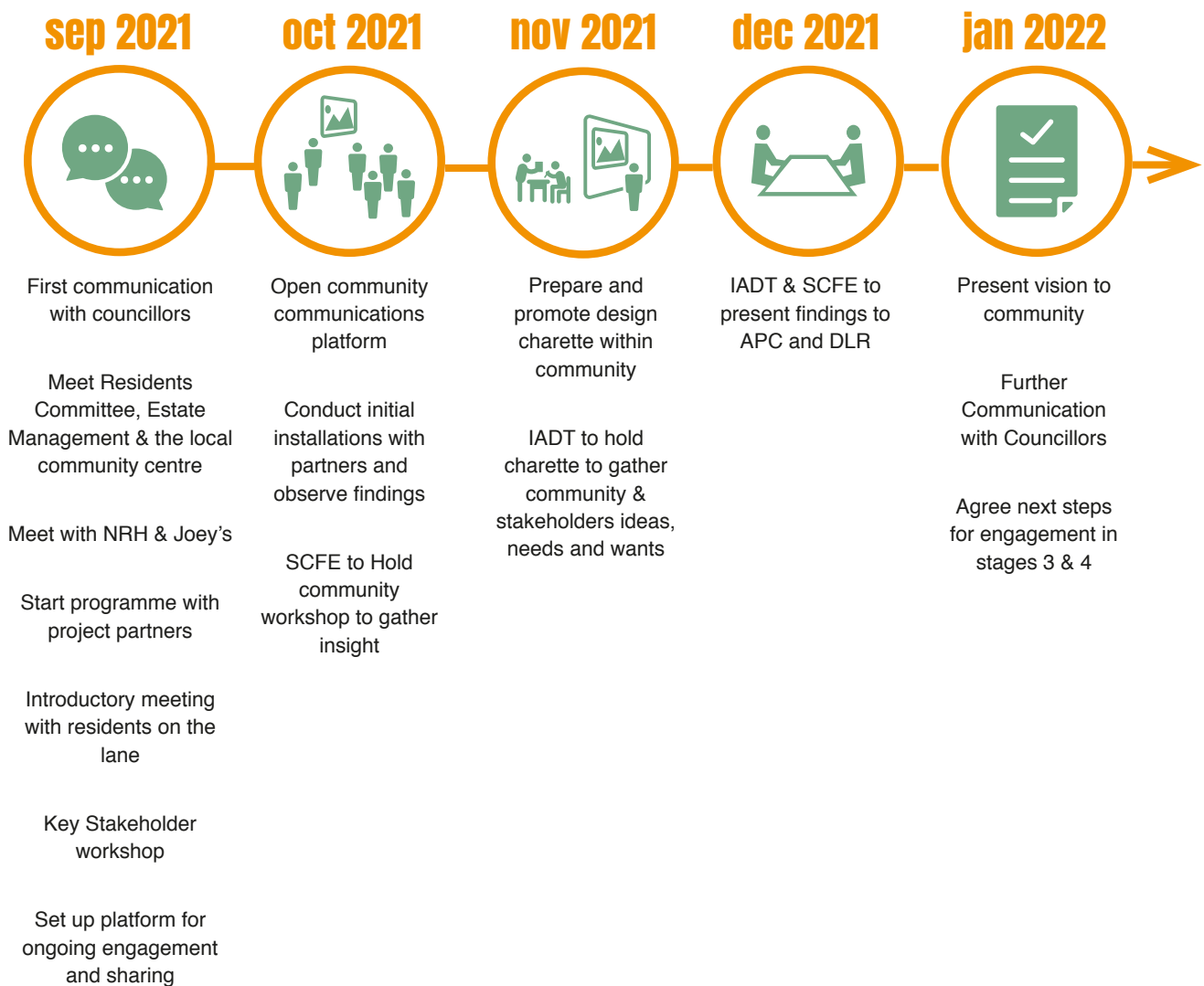
Engagement Strategy

During phase 1 & 2, we are seeking to include the voices of all ages & abilities and in particular learn from local residents and community translating their ideas into a vision for delivery by DLRCC. Working alongside university programmes in Dun Laoghaire Institute Of Art Design + Technology & Sallynoggin College of Further Education we will work with the community to establish effective methods for engagement.

We have mapped and highlighted the key and wider stakeholders in the community through our partnerships with DLRCC and Neighbourhood

Network. With IADT and SCFE we have developed a timeline for engagement, highlighting partners in the community who may assist, be involved and collaborate with IADT and SCFE, to empower community and increase the levels of community ownership of the project.

A key event for the process is the community charette. Here, we hope to gather the local residents and key community stakeholders for a workshop event to discuss and gather final ideas building on the intial discussions of how the lane can be reimaged.



Where...



Pearse Drive

Sallynoggin is defined by a series of long streets running between Sallyglen Road and Rochestown Avenue, with the majority of retail to the North East of the laneway and public amenity to the south.

Pearse Drive (in red), forms the base for this pilot project. It is located in between these two areas splitting long residential plots. Nearly all local facilities are located within a 500m or 15 minutes from the lane which is centrally located in Sallynoggin. A number of the residential roads to the north of Sallynoggin Road are active school travel routes or existing low traffic streets suitable for on road cycling. There are a series of long residential streets splitting the lane into five sections

With close proximity to places such as St Josephs Boys AFC and the Community & Senior Centre, and so has the potential to become a key link between these key stakeholders, as well as an inclusive, accessible and attractive place for local community.

Where...



Exemplar Projects...



Kings Crescent Estate Hackney



Green Alleys/ Ruelles Vertes, Montreal



We want to hear from you..

Please forward your thoughts and opinions on the project to either Sean or Michelle @ DLRCC

skeane@DLRCOCO.IE

michellecarroll@DLRCOCO.IE



A Playful City
The Tara Building,
Tara Street,
Dublin 2

playfulcity@gmail.com