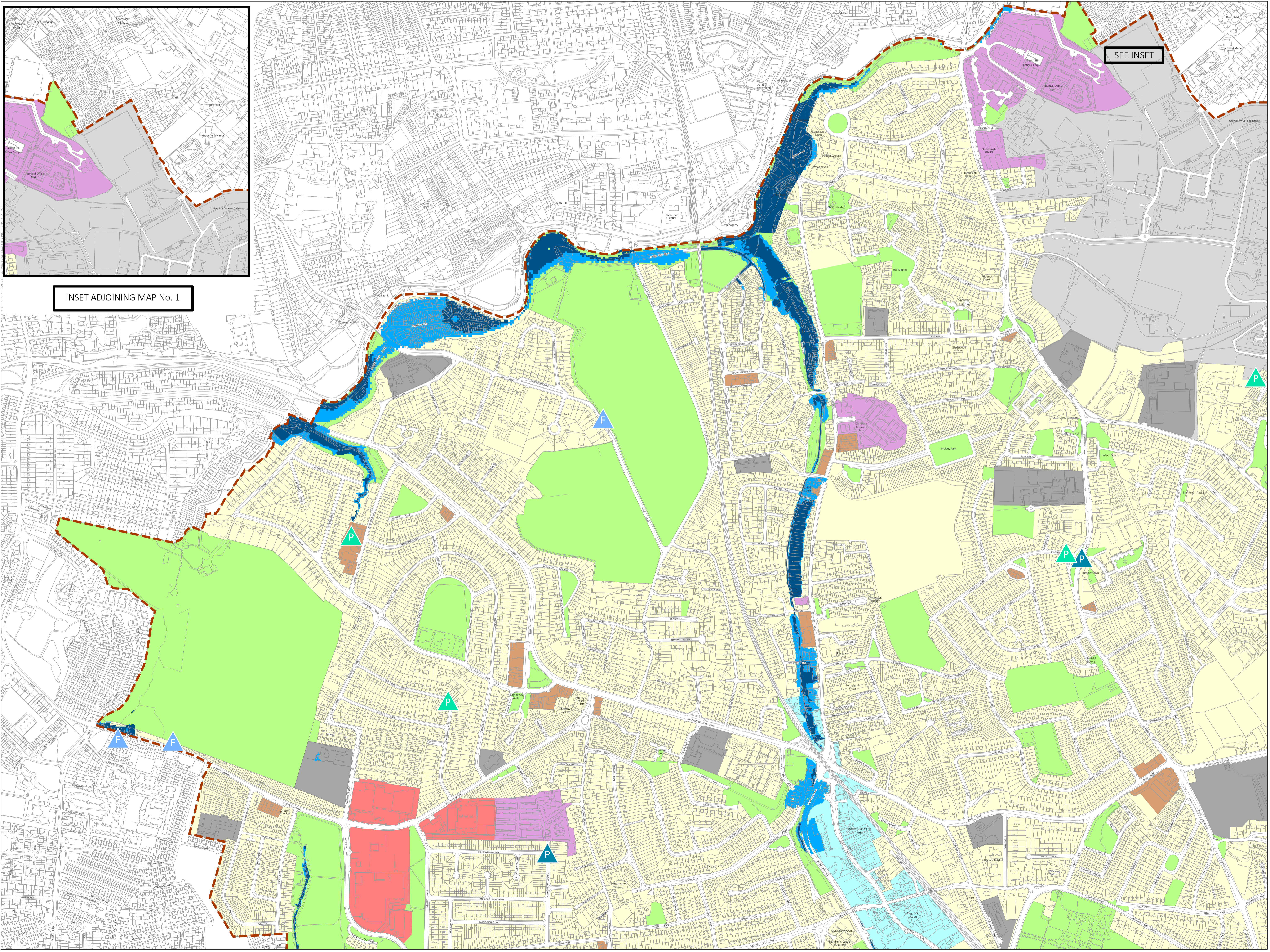
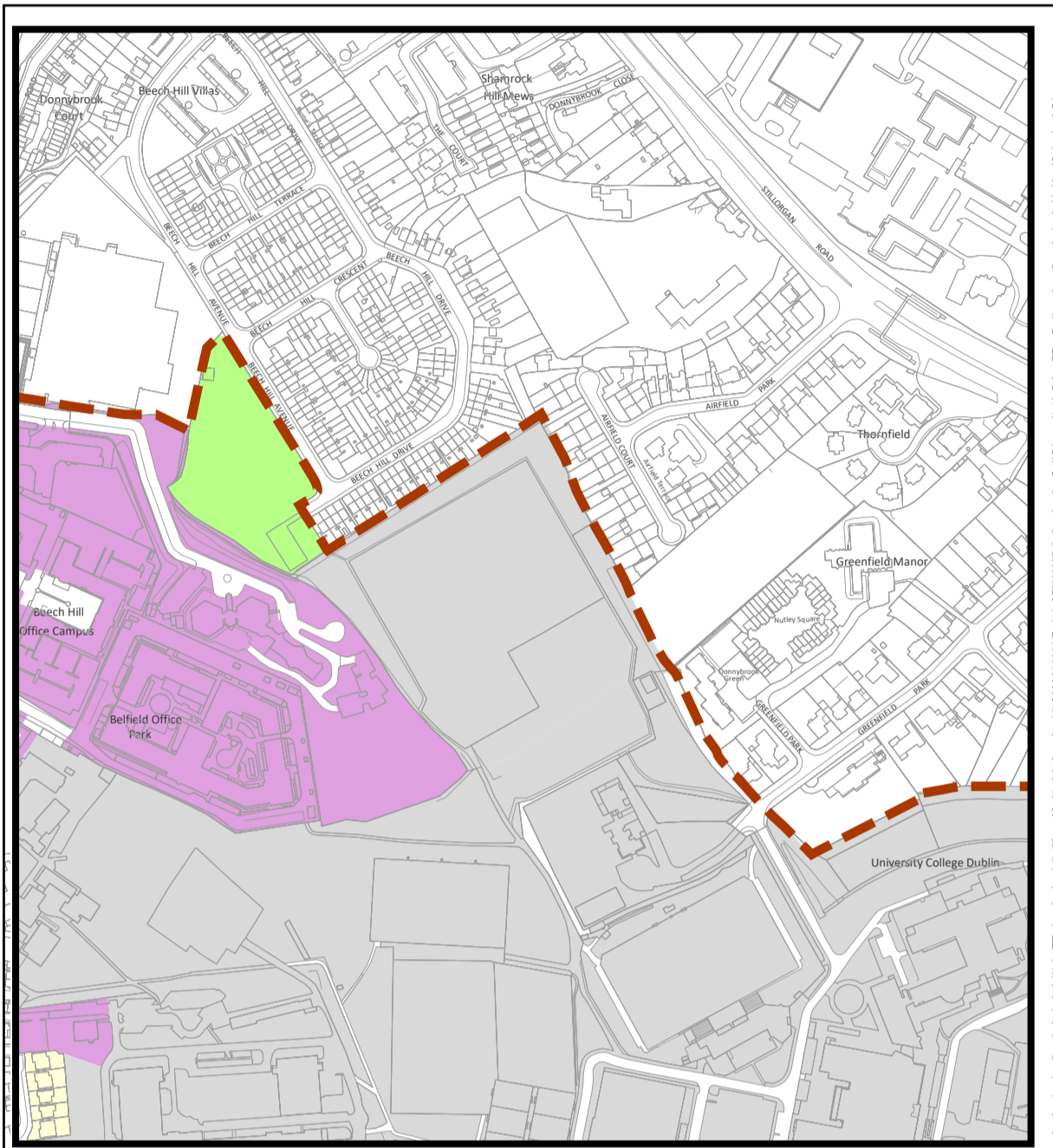
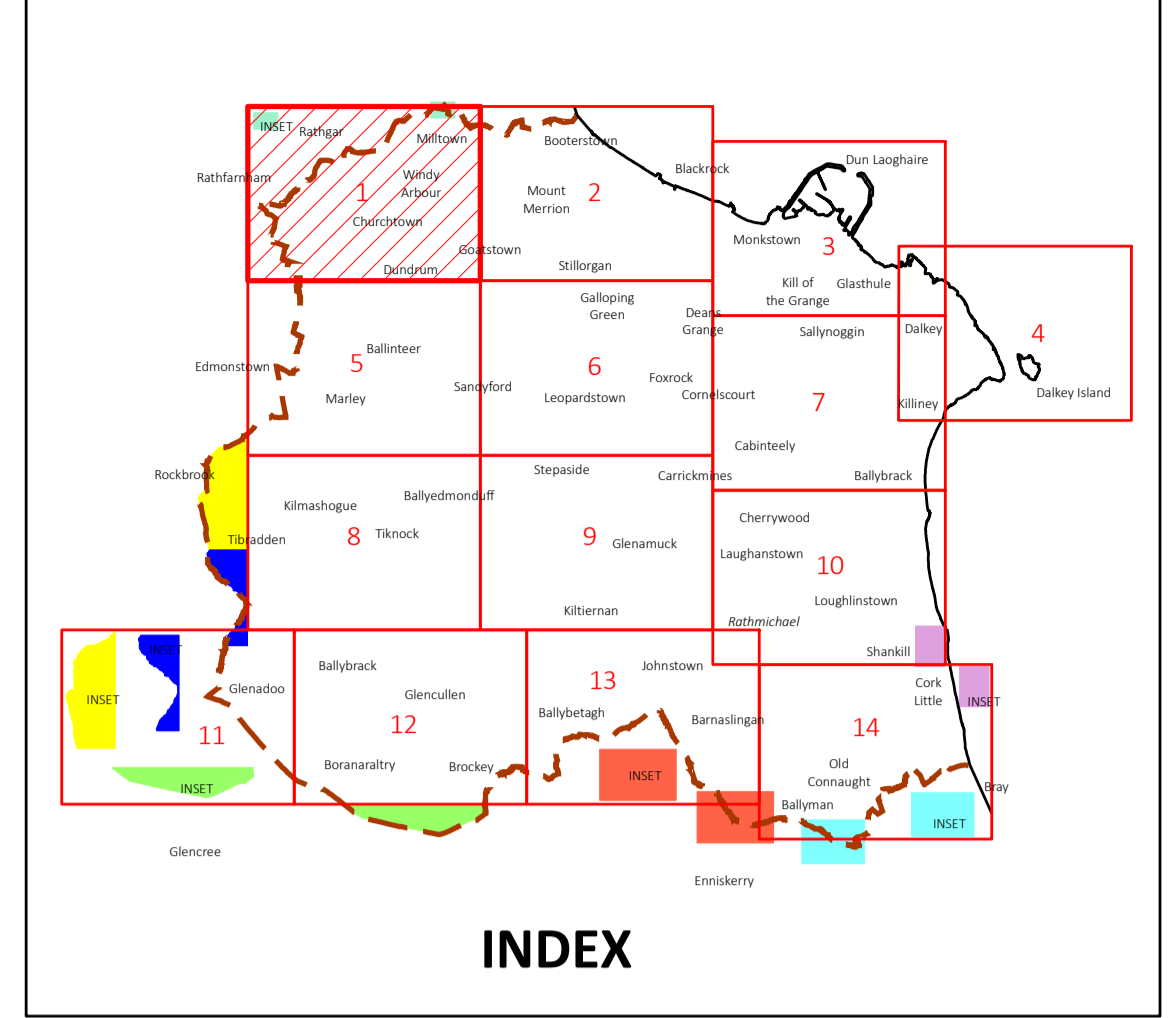


**Mapping Notes**

- The lines of the Road Proposals shown are diagrammatic only and may be subject to change.
- Wave Overtopping layer is relevant to the following maps only: Map No's. 2, 3, 4, 7, 10 & 14 unless noted otherwise.
- These flood maps contain Land Use Zonings & Flooding information only. Please refer to the Land Use Zoning maps for more detailed land use objectives.

**Flood Zone Map**

COMHAIRLE CHONTAE DHÚN LAOGHAIRE-RÁTH AN DÚIN  
**DÚN LAOGHAIRE-RATHDOWN COUNTY COUNCIL**  
 COUNTY DEVELOPMENT PLAN 2022-2028  
 Adopted March 2022



**Land Use Zonings**

- Objective A To provide residential development and improve residential amenity while protecting the existing residential amenities.
- Objective A1 To provide for new residential communities and Sustainable Neighbourhood Infrastructure in accordance with approved local area plans.
- Objective A2 To provide for the creation of sustainable residential neighbourhoods and preserve and protect residential amenity.
- Objective B To protect and improve rural amenity and to provide for the development of agriculture.
- Objective DC To protect, provide for and/or improve mixed-use district centre facilities.
- Objective E To provide for economic development and employment.
- Objective F To preserve and provide for open space with ancillary active recreational amenities.
- Objective G To protect and improve high amenity areas.
- Objective GB To protect and enhance the open nature of lands between urban areas.
- Objective LIW To improve and provide for low density warehousing/light industrial warehousing uses.
- Objective MIC To consolidate and complete the development of the mixed use inner core to enhance and reinforce sustainable development.
- Objective MOC To provide for a mix of uses which complements the inner core, but with less retail and residential and more emphasis on employment and services.
- Objective MTC To protect, provide for and/or improve major town centre facilities.
- Objective NC To protect, provide for and/or improve mixed-use neighbourhood centre facilities.
- Objective OE To provide for office and enterprise development.
- Objective TLI To facilitate, support and enhance the development of third level education institutions.
- Objective W To provide for waterfront development and harbour related uses.
- Objective SNI To protect, improve and encourage the provision of sustainable neighbourhood infrastructure.

**Areas of Flood Risk Concern**

- Fluvial - Surface Water
- Pluvial - Surface Water
- Pluvial - Foul
- Flood Zone A
- Flood Zone B
- Wave Overtopping
- County Boundary

0 50 100 200 300 400 500 Metres

© - Ordnance Survey Ireland, 2022

Director of Planning: M Henchy  
 Senior Planner: L McGauran

**1**