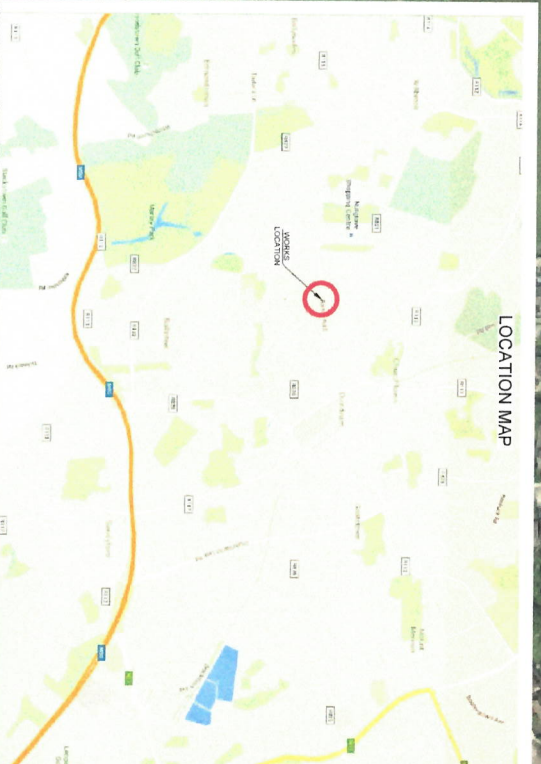
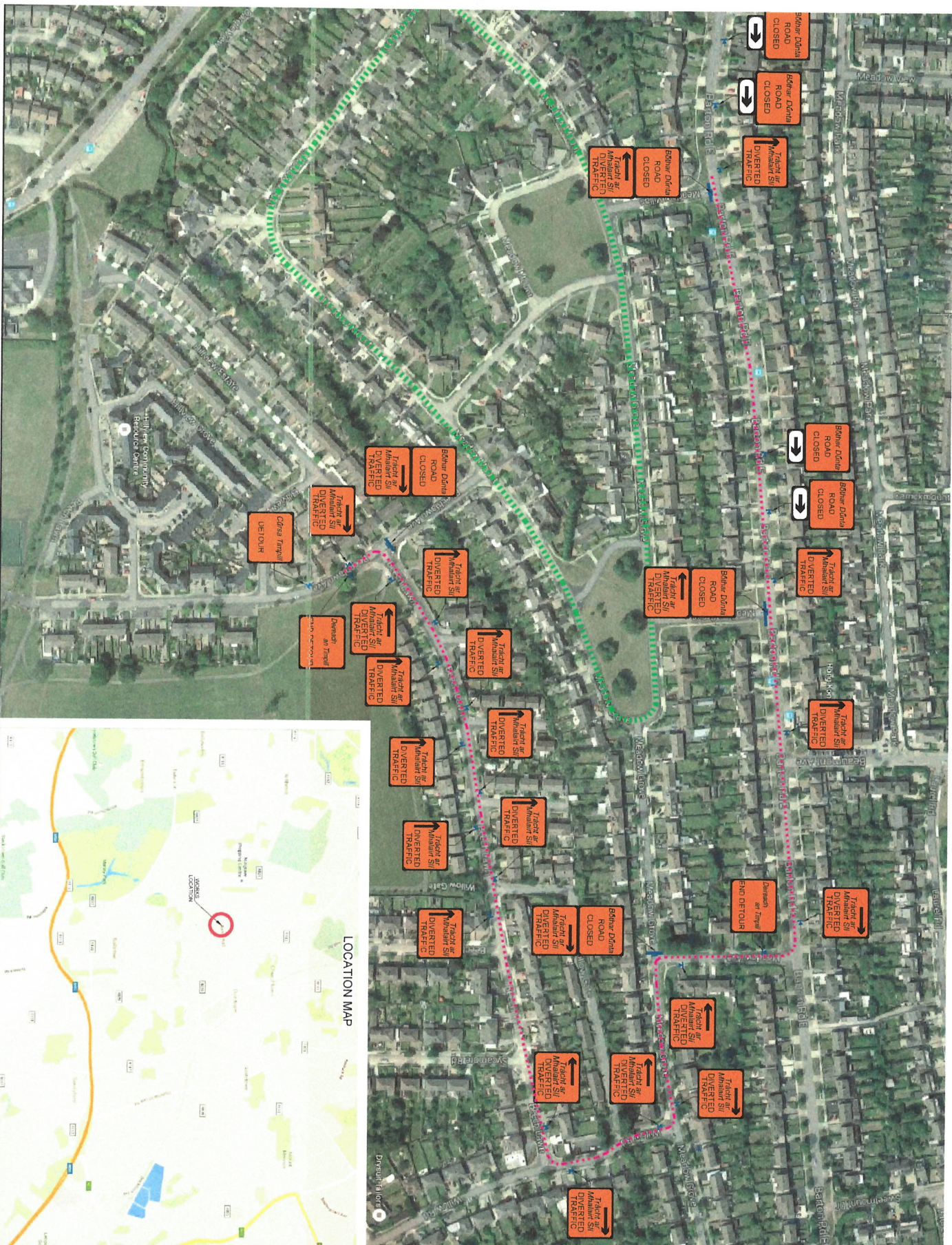


# DESIGN PARAMETERS

TYPE OF ROAD:	Single Carriageway
ROAD LEVEL:	Level 2
ROADWORKS TYPE:	Type B
SPEED LIMIT:	50/60 km/h
SIGN VISIBILITY:	50m
NUMBER OF SIGNS:	3
ADVANCE SIGN SPACING:	25m
LONGITUDINAL SAFETY ZONE:	25m
LATERAL SAFETY ZONE:	0.5m
MINIMUM HEIGHT OF CONES:	750mm
MINIMUM SIGN DIMENSION (RECTANGULAR):	600mm
MINIMUM SIGN DIMENSION (CIRCULAR):	600mm
MINIMUM LANE WIDTH:	3.00m
TM SYSTEM:	Road Closure

## LEGEND:

- Sign Location
- Traffic Cone
- Works Location
- Pedestrian Barrier
- Diversion Route
- Event Route



**GENERAL NOTES:**

- THIS TRAFFIC MANAGEMENT PLAN MAY ONLY BE IMPLEMENTED BY A TEMPORARY TRAFFIC OPERATIONS SUPERVISOR. THE CONTRACTOR SHALL BE RESPONSIBLE FOR THE ASSESSMENT TO MODIFY THE PLAN TO SUIT ACTUAL SITE CONDITIONS BEFORE IMPLEMENTATION.
- THE TEMPORARY TRAFFIC OPERATIONS SUPERVISOR MUST BE IN POSSESSION OF THE VALID CONSTRUCTION SKILLS REGISTRATION CARD SIGNING LIGHTING AND QUARDING AT DASHWORKS CONSTRUCTION REGULATIONS 2008.
- PRELIMINARY BASIS AND DOES NOT TAKE ACCOUNT OF THE SCALES ASSOCIATED WITH THE DIFFERENT PHASES OF THE REMOVAL AND TEMPORARY ACCESS HAVE NOT BEEN DEVELOPED INTO THE PLANS THEY WERE NOT ADVISED AT THE TIME OF PREPARATION.
- IN ORDER THAT THE REQUIREMENTS AS SET PER THE PLANS AND REGULATIONS 2008 BE MET, CONTRACTORS SHOULD TAKE INTO ACCOUNT THE PRESENT REGULATIONS 2008 AS REGS 16-17 AND REGS 17-28 RESPECTIVELY. IN ADDITION THE PDS SHOULD REFLECT THOSE CONDITIONS.
- ALL WORKS ARE TO BE CARRIED OUT IN ACCORDANCE WITH THE LOCAL AUTHORITY REQUIREMENTS AND TO BE INCLUDED IN THE SITE SPECIFIC SAFETY & HEALTH PLAN.
- SITE INSPECTIONS AND MAINTENANCE OF THE TEMPORARY TRAFFIC MANAGEMENT LAYOUT TO BE CONDUCTED ON A DAILY BASIS TO ENSURE THE SAFETY AND INTEGRITY OF THE DESIGN.
- CONTRACTORS TO CARRY OUT A SITE RISK ASSESSMENT PRIOR TO THE INSTALLATION OF THE TEMPORARY TRAFFIC MANAGEMENT PLAN TO ENSURE THAT CONDITIONS REFLECT THOSE

**COMPLETE HIGHWAY MAINTENANCE**

Lvr Ballymount Rd Tel: (01) 424 2070  
 Walskinstown Fax: (01) 450 0144  
 Dublin 12 Email: info@ctm.ie  
 Ireland Web: www.ctm.ie

Copyright © 2017  
 This drawing and any design herein is the copyright of CDM Group and  
 is intended for reproduction without further written consent.

**CDM Group**

Project: STEPHEN ROCHE GP 2017

Title: Traffic Management Plan

Revisions:

REV	DESCRIPTION	DATE	REV

Client: **ORWELL wheelers**

Director: BE  
 Scale: N.T.S.  
 Drawing No: ENI 2612 - 000 - 002

Prog Man: DH  
 Drawn by: AK  
 Date: 07.06.17  
 Checked: DH  
 Rev: /