

Mapping Notes

1. When printing this map, colours may vary depending on type of printer used. Please refer to dlr website for definitive colours.
2. Wave Overtopping layer is relevant to the following maps only: Map No's. 2, 3, 4, 7, 10 & 14 unless noted otherwise.

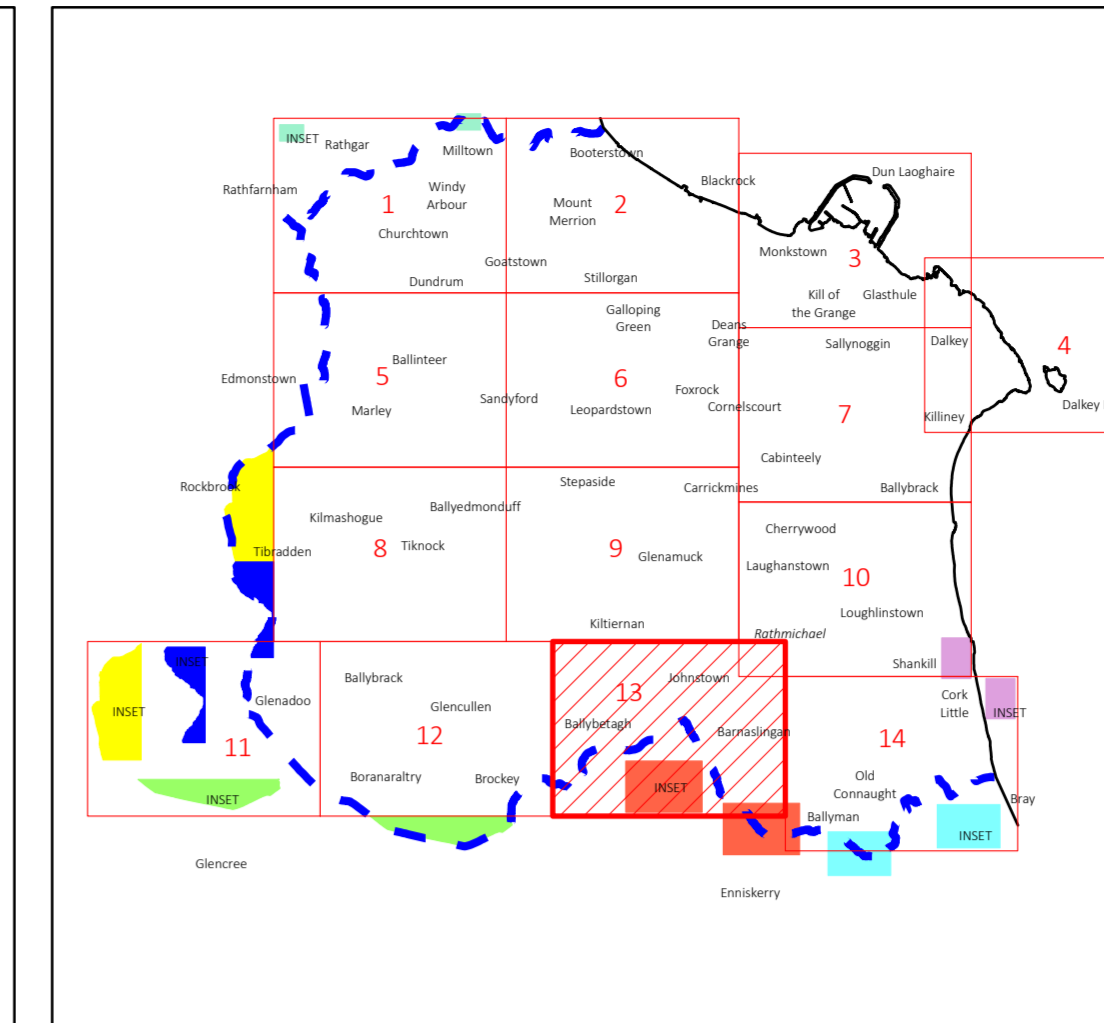
Flood Zone Map

COMHAIRLE CHONTAE DHÚN LAOGHAIRE-RÁTH AN DÚIN

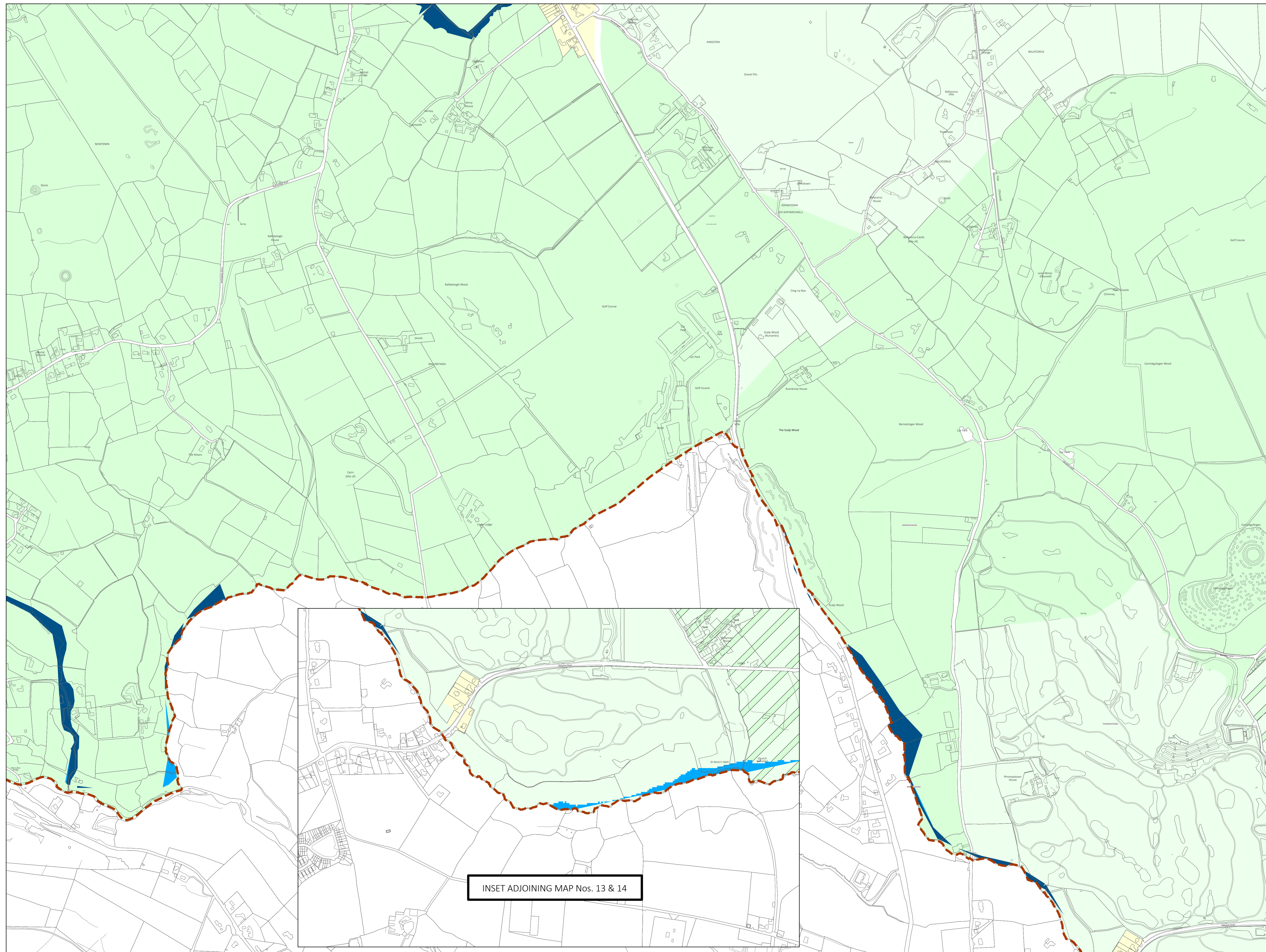
DÚN LAOGHAIRE-RATHDOWN COUNTY COUNCIL

COUNTY DEVELOPMENT PLAN 2022-2028

Proposed Amendments to Draft Plan November 2021

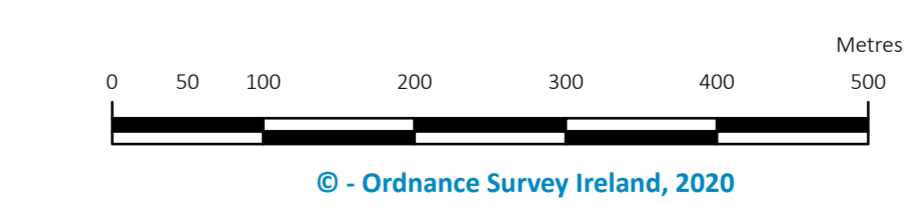


[Amendments to Flood Map](#)
 Flood Zones A & B colours amended
 Wave Overtopping layer added
 Mapping Note 2 added



INSET ADJOINING MAP Nos. 13 & 14

Land Use Zonings	
Objective A	To provide residential development and/or protect and improve residential amenity.
Objective A1	To provide for new residential communities and Sustainable Neighbourhood Infrastructure in accordance with approved local area plans.
Objective A2	To provide for the creation of sustainable residential neighbourhoods and preserve and protect residential amenity.
Objective B	To protect and improve rural amenity and to provide for the development of agriculture.
Objective DC	To protect, provide for and/or improve mixed-use district centre facilities.
Objective E	To provide for economic development and employment.
Objective F	To preserve and provide for open space with ancillary active recreational amenities.
Objective G	To protect and improve high amenity areas.
Objective GB	To protect and enhance the open nature of lands between urban areas.
Objective LIW	To improve and provide for low density warehousing/light industrial warehousing uses.
Objective MIC	To consolidate and complete the development of the mixed use inner core to enhance and reinforce sustainable development.
Objective MDC	To provide for a mix of uses which complements the inner core, but with less retail and residential and more emphasis on employment and services.
Objective MTC	To protect, provide for and/or improve major town centre facilities.
Objective NC	To protect, provide for and/or improve mixed-use neighbourhood centre facilities.
Objective DE	To provide for office and enterprise development.
Objective TU	To facilitate, support and enhance the development of third level education institutions.
Objective W	To provide for waterfront development and harbour related uses.
Objective SNI	To protect, improve and encourage the provision of sustainable neighbourhood infrastructure.
County Boundary	
Areas of Flood Risk Concern	
Fluvial - Surface Water	
Fluvial - Surface Water	
Fluvial - Foul	
Flood Zone A	
Flood Zone B	
Wave Overtopping	
County Boundary	
Boundary of Adopted Cherrywood Planning Scheme	



© - Ordnance Survey Ireland, 2020
 Director of Planning: M Henchy
 Senior Planner: L McGauran