

Mapping Notes

1. When printing this map, colours may vary depending on type of printer used. Please refer to dlr website for definitive colours.
2. Wave Overtopping layer is relevant to the following maps only: Map No's. 2, 3, 4, 7, 10 & 14 unless noted otherwise.

Flood Zone Map

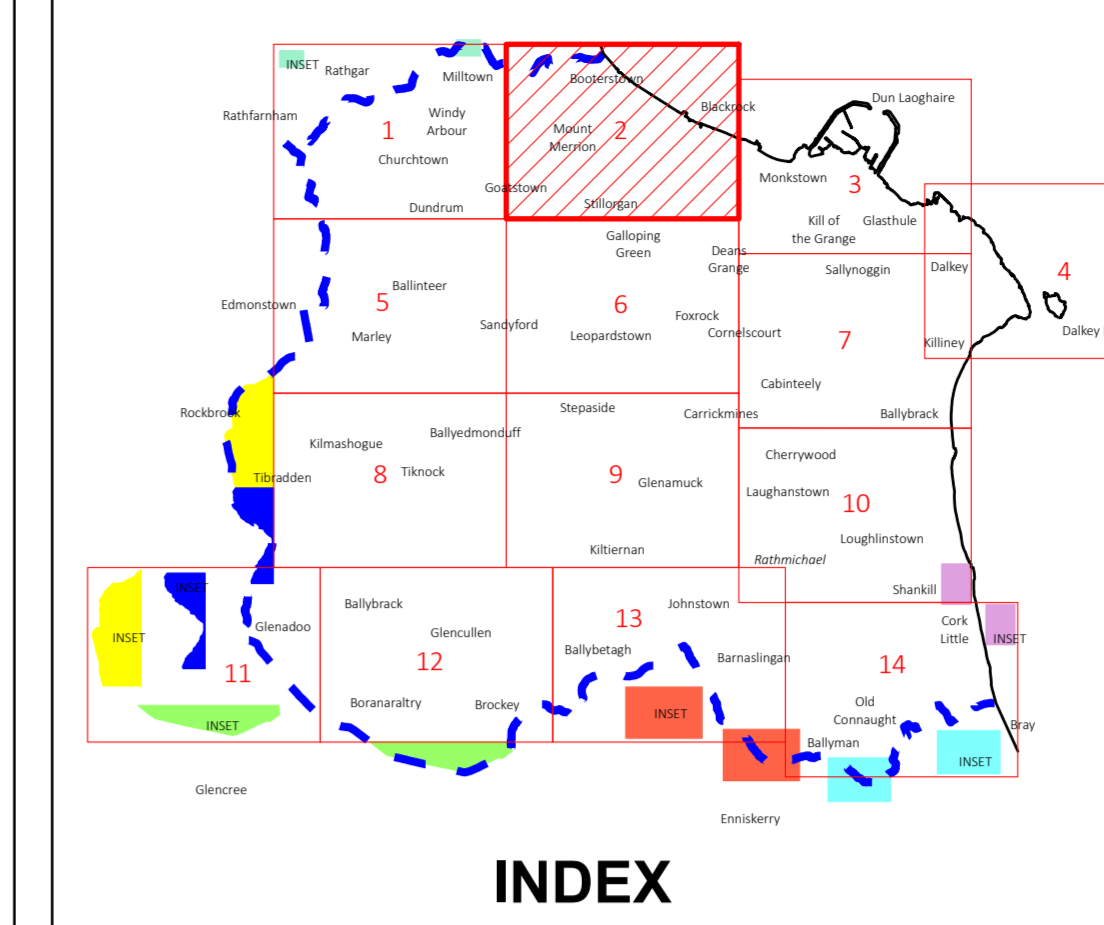


COMHAIRLE CHONTAE DHÚN LAOGHAIRE-RÁTH AN DÚIN

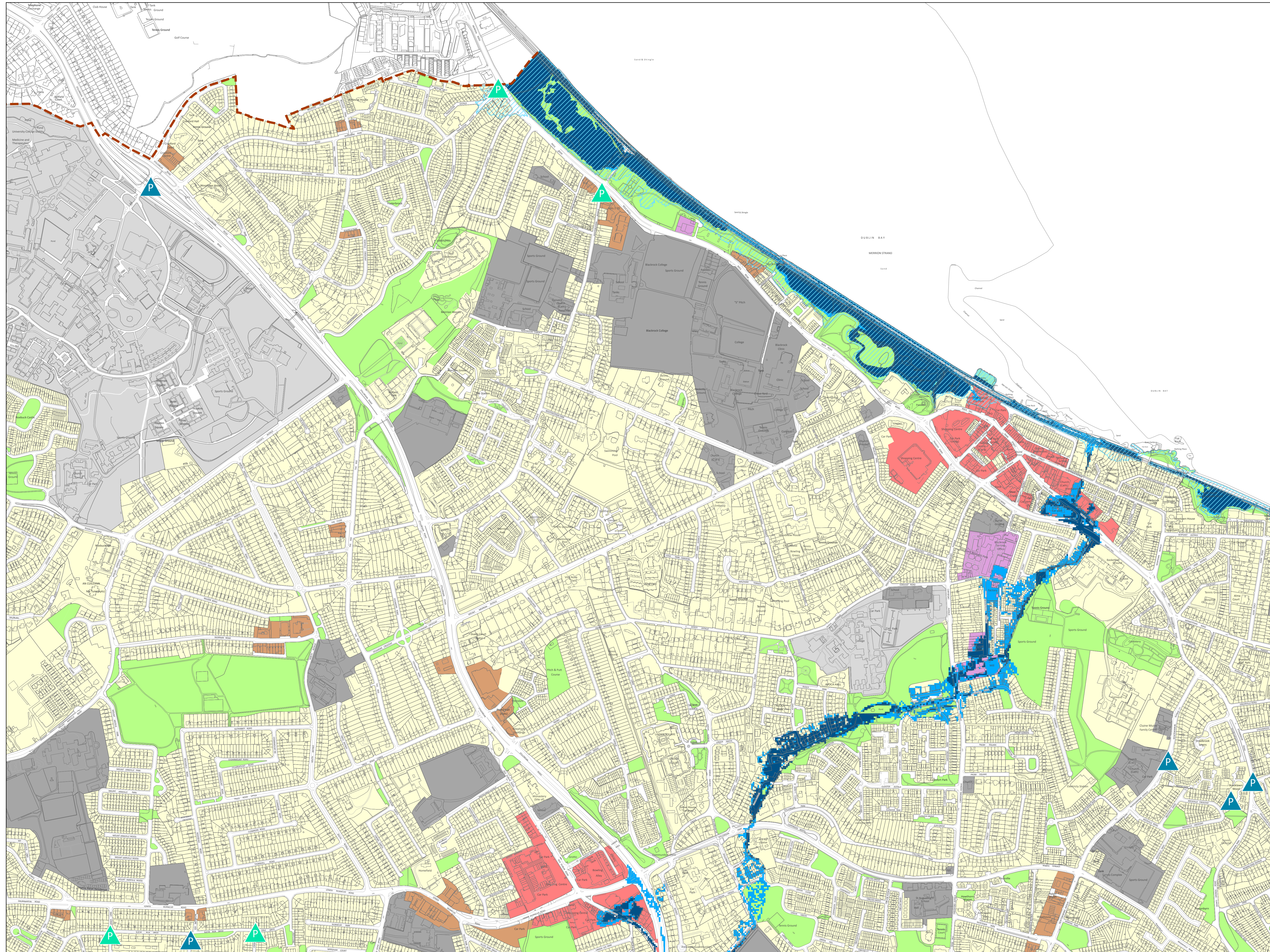
DÚN LAOGHAIRE-RATHDOWN COUNTY COUNCIL

COUNTY DEVELOPMENT PLAN 2022-2028

Proposed Amendments to Draft Plan November 2021



[Amendments to Flood Map](#)
 Flood Zone A & B colour amended
 Wave Overtopping layer added
 Mapping Note 2 added



Land Use Zonings

Objective A	To provide residential development and/or protect and improve residential amenity.	[Yellow]
Objective A1	To provide for new residential communities and Sustainable Neighbourhood Infrastructure in accordance with approved local area plans.	[Light Yellow]
Objective A2	To provide for the creation of sustainable residential neighbourhoods and preserve and protect residential amenity.	[Yellow-Green]
Objective B	To protect and improve rural amenity and to provide for the development of agriculture.	[Light Green]
Objective DC	To protect, provide for and/or improve mixed-use district centre facilities.	[Red]
Objective E	To provide for economic development and employment.	[Purple]
Objective F	To preserve and provide for open space with ancillary active recreational amenities.	[Light Green]
Objective G	To protect and improve high amenity areas.	[Light Green]
Objective GB	To protect and enhance the open nature of lands between urban areas.	[Green with diagonal lines]
Objective LIW	To improve and provide for low density warehousing/light industrial warehousing uses	[Blue]
Objective MIC	To consolidate and complete the development of the mixed use inner core to enhance and reinforce sustainable development.	[Orange]
Objective MDC	To provide for a mix of uses which complements the inner core, but with less retail and residential and more emphasis on employment and services.	[Pink]
Objective MTC	To protect, provide for and/or improve major town centre facilities.	[Cyan]
Objective NC	To protect, provide for and/or improve mixed-use neighbourhood centre facilities.	[Brown]
Objective DE	To provide for office and enterprise development.	[Light Grey]
Objective TU	To facilitate, support and enhance the development of third level education institutions.	[Light Grey]
Objective W	To provide for waterfront development and harbour related uses.	[Green]
Objective SNI	To protect, improve and encourage the provision of sustainable neighbourhood infrastructure	[Dark Grey]
County Boundary		[Dashed Brown Line]

Areas of Flood Risk Concern

Fluvial - Surface Water	[Blue Triangle with 'F']
Fluvial - Surface Water	[Blue Triangle with 'P']
Fluvial - Foul	[Green Triangle with 'P']

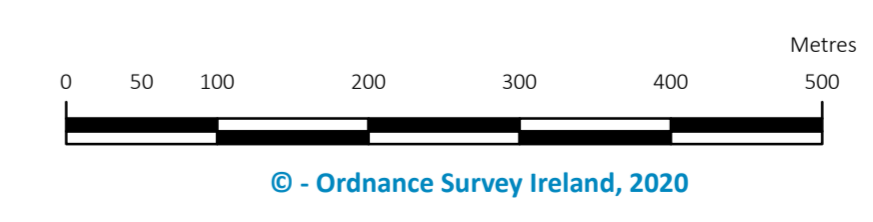
Flood Zone A [Dark Blue]

Flood Zone B [Light Blue]

Wave Overtopping [Blue and White Hatched]

County Boundary [Dashed Brown Line]

Boundary of Adopted Cherrywood Planning Scheme [Red Dotted Line]



Director of Planning: M Henchy
 Senior Planner: L McGauran