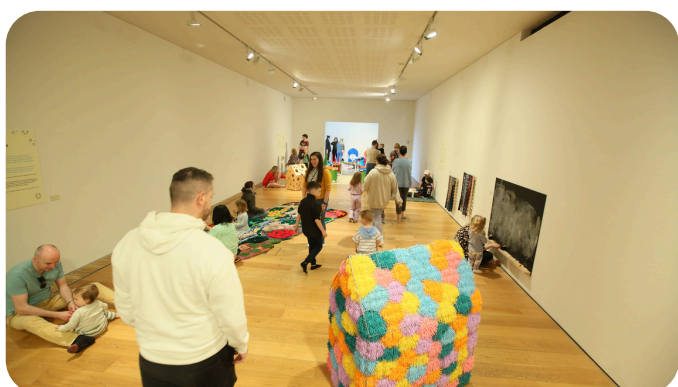


Municipal Gallery, dlr LexIcon: Gallery Space and Equipment Guide for Artists

About the Gallery

- The dlr LexIcon Municipal Gallery is a public art space in Dún Laoghaire, opened in December 2014.
- It hosts 5–6 exhibitions per year, including commissioned, touring, and open-call shows.
- Each exhibition includes a learning programme with events like talks, workshops, films, and tours.
- Around 7000 people visit each exhibition.



Gallery Layout

- Located on the third floor of dlr LexIcon building.
- Two exhibition areas:
 - Gallery 1: 22m long × 5.9m wide × 3.335m high.
 - Gallery 2: 4.65m × 5.75m (not square) × 3.5m high.



- Walls are plasterboard-covered wood, easy to fix artworks to.
- Items cannot be secured to the ceiling.
- Four movable walls available:
 - Two double (220 × 211 cm)
 - Two single (220 × 105 cm)



Lighting

- Dali Lighting system.
- Gallery 1: Lights cannot be dimmed more than two levels.
- Gallery 2: lights can be turned off for projections.
 - Window in gallery 2 can be shuttered to dim room for projections.



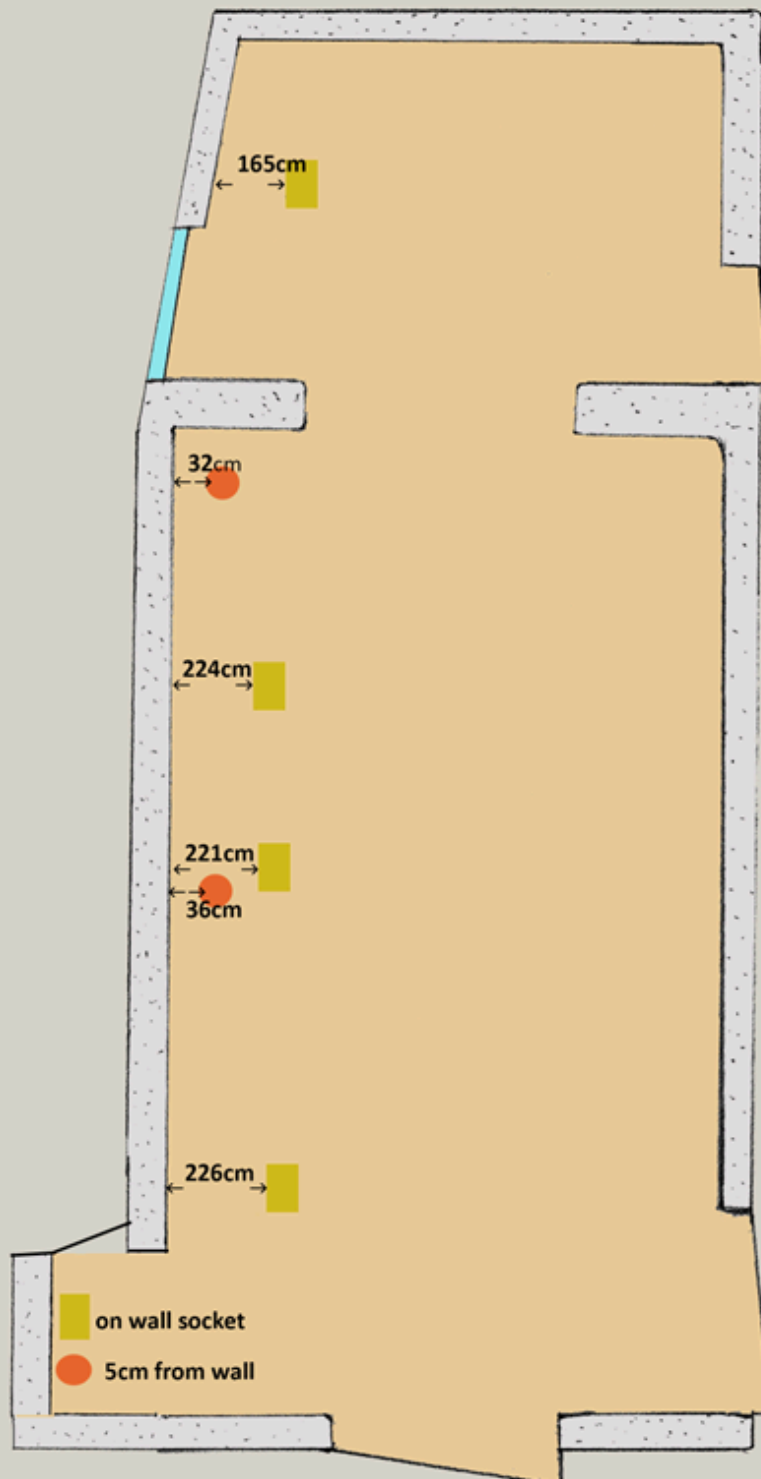
Power

- Floor power points with floor panel covers.
- Use safety covers for cables.
- Power points are on the left side.
- Cables can be hidden under floor grating on the left side.

■ 2 gang sockets are located underneath these panels. Please note the are locked

● 1 gang sockets are located underneath these circular caps. They are not locked.

*Please note that power can be taken from the AV store and the cables run underneath the ventallation grill on the left hand side of the gallery.



Furniture and Display

- Two bench-style seats (each seats three). Seating in gallery is mandatory.
- Various plinths available, including:
 - 6 lockable hooded plinths for delicate items. Cannot be painted.
 - 6 unlockable hooded plinths for delicate items. Cannot be painted.
 - plinths with no hood. Cannot be painted.
 - 10 unlockable hooded plinth that can be painted.
 - 3 large low plinths for 3D works. Cannot be painted.

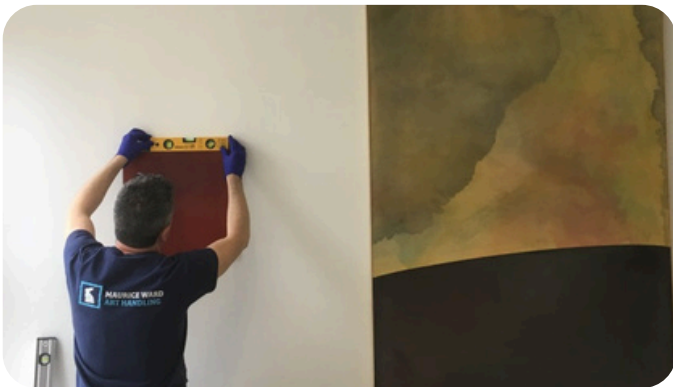


Available Equipment

- TVs: 55" Samsung, 32" Sony, plus older models (32", 24", 16").
- DVD/BluRay players.
- Wall brackets for TVs.
- Headphones: Bluetooth and wired.
- Samsung tablet.
- 10 MP3 players.
- Ceiling-mounted projector in Gallery 2 with speakers.

Installation

- Installations are handled by Maurice Ward Art Handling (2 technicians).
- Install takes 2 working days (9am–5:30pm, 1 hour break).
- Artists must provide artwork ready to install.
- Technical needs should be discussed in advance.
- Artists can help with installation if they have:
 - Public Liability Insurance (€6.5 million indemnity to Dún Laoghaire County Council).
- Artists get a half-day before installation to plan layout with the Gallery Producer.



Tools

- Gallery has a tool store.
- Artists needing special tools should inform the Gallery Producer early and may need to bring their own.

Storage

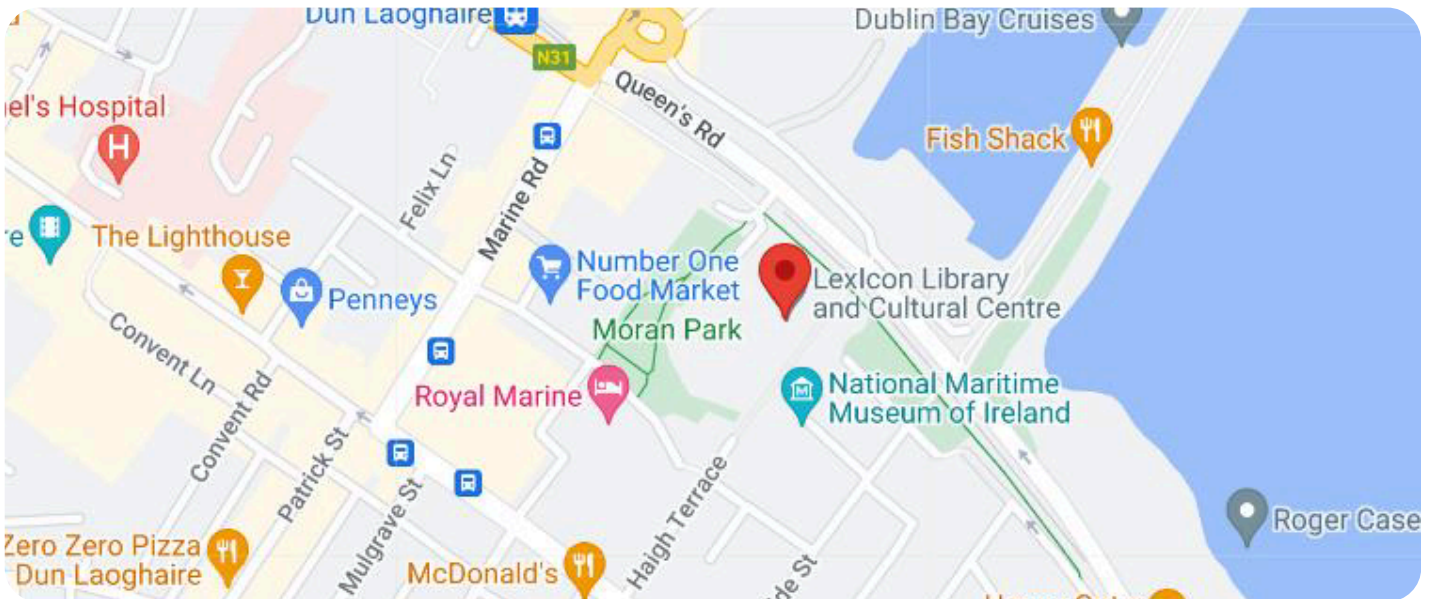
- No storage for artworks.
- Artists can store wrapping materials during their exhibition.
- Unused artworks must be taken away.

Rules and Guidelines

- No staff supervision in the Gallery—choose artworks accordingly.
- Uses Ryman's to securely hang system for flat works.
- Art must be installation-ready on arrival.
- Artists can assemble large works on-site.
- No hanging from the ceiling.
- No wall markers.
- Main walls cannot be painted (movable walls can).
- No drilling into the floor.
- Video/audio works should be easy for staff to operate—include clear instructions.

Access

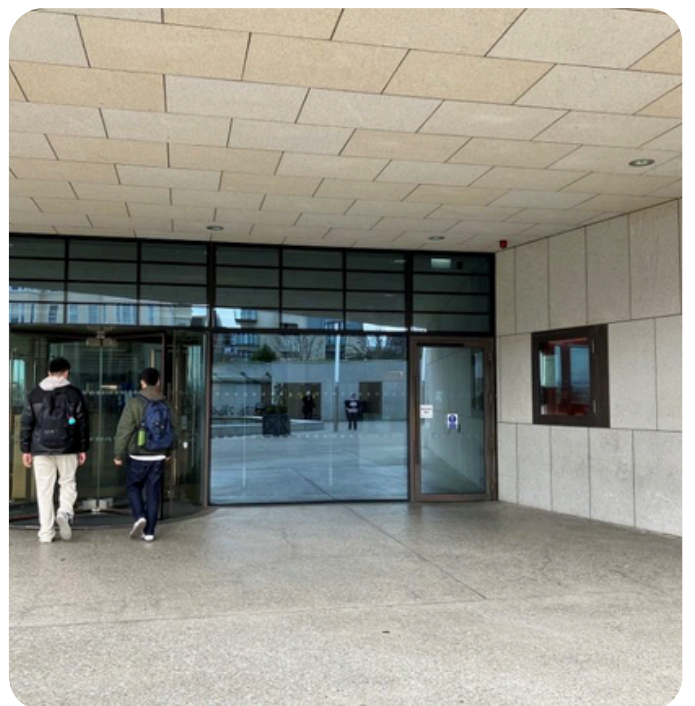
- Entry via Haigh Terrace or Queens Road. Eircode A96 H283.
- Car park is on Queens Road.
- Artwork delivery via Haigh Terrace loading bay (contact security for access).



Haigh Terrace carpark and public entrance



Haigh Terrace



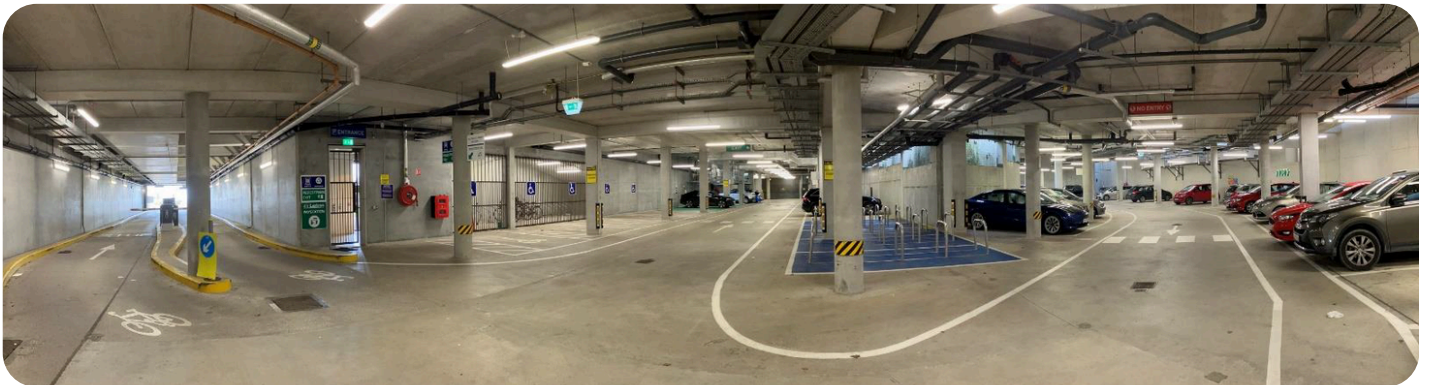
Haigh Terrace public entrance



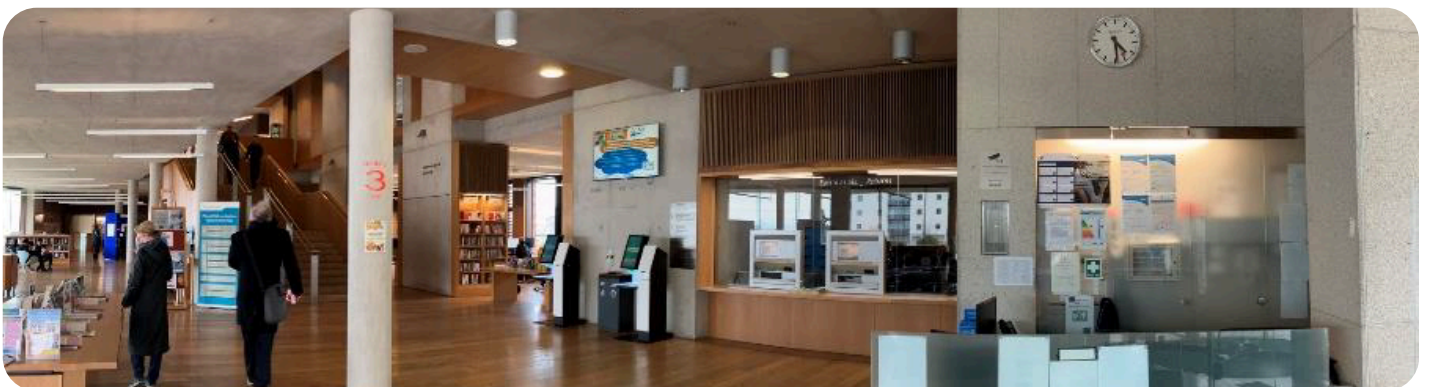
Carpark accessible parking



Carpark rates



Carpark



Public entrance from Haigh Terrace



Queens Road public entrance



Queens Road public entrance



Level 3, door to Queens road



Gallery Level 3

- The Project room is accessed through the Gallery



- Largest doorway: 2200mm × 1900mm.
- 3D artworks must not exceed 730kg per square metre.
- Art transporter recommendations available from the Arts Office.

Please contact us with any further questions.

Email: arts@dlrcoco.ie

Phone: 01 2362759