



Parks: Windy Arbour Playground Upgrade, Patrick Doyle Road, Rathmines

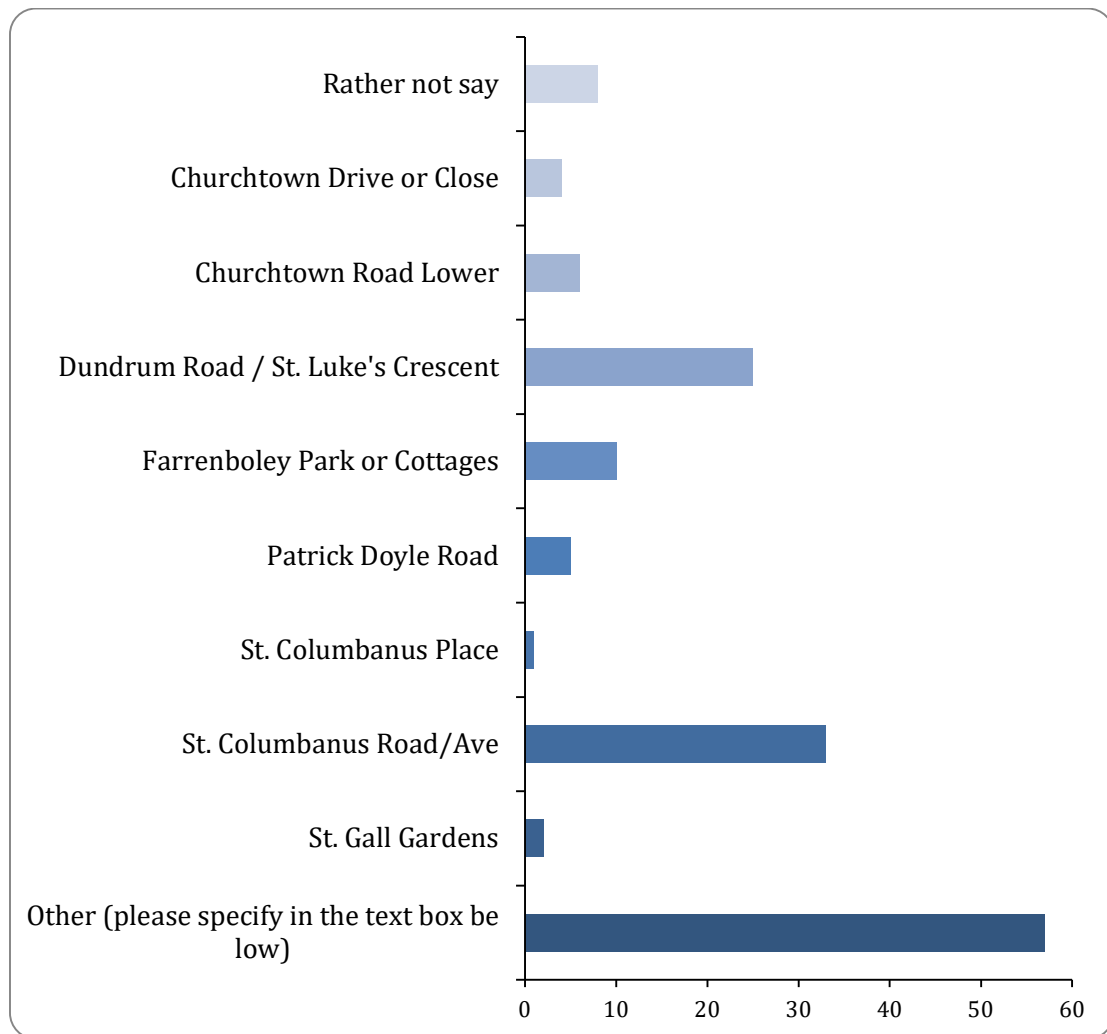
<https://dlrcoco.citizenspace.com/parks/playground-upgrade-windy-arbour>

The activity ran from 14/04/2025 to 05/05/2025

Responses to this survey: **151 plus 10 emailed responses.**

1: Where do you live?

There were 151 responses to this part of the question.



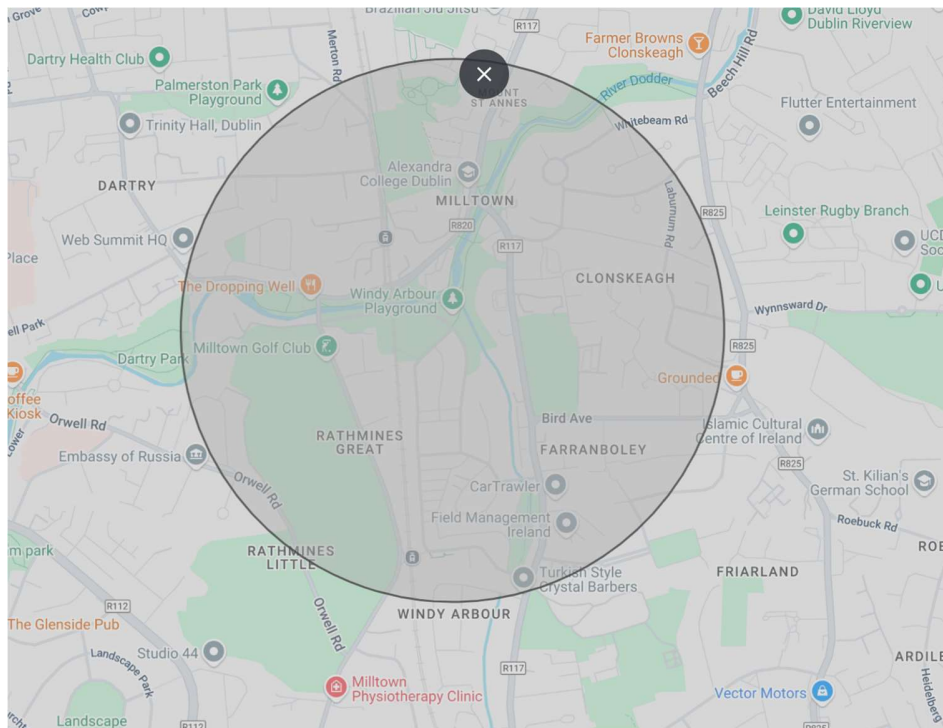
Option	Total	Percent
Rather not say	8	5.30%
Churchtown Drive or Close	4	2.65%
Churchtown Road Lower	6	3.97%
Dundrum Road / St. Luke's Crescent	25	16.56%
Farrenbole Park or Cottages	10	6.62%
Glasson Court	0	0.00%
Patrick Doyle Road	5	3.31%
Shanagarry	0	0.00%
St. Columbanus Place	1	0.66%

Dún Laoghaire-Rathdown County Council

St. Columbanus Road/Ave	33	21.85%
St. Gall Gardens	2	1.32%
Other (please specify in the text box below)	57	37.75%
*See below for comment regarding Other		

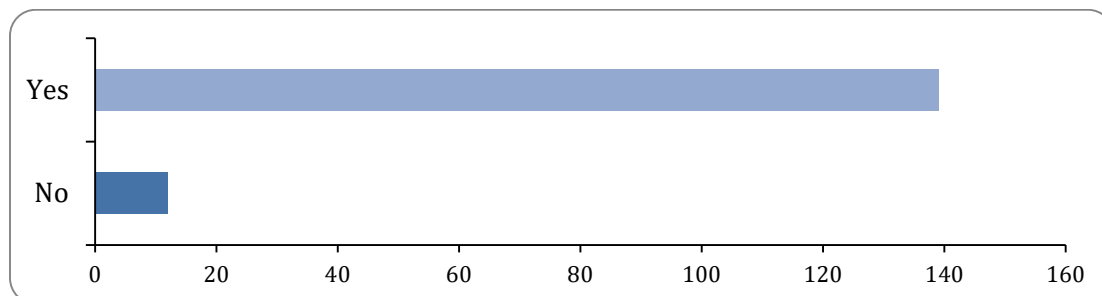
Where do you live

There were 56 responses to this part of the question. Some included other roads or areas that were covered above. There were responses from participants as far away as Ranelagh, Ballinteer, Dundrum, who used the playground when they came to visit friends or family. The majority of people using the playground live within a radial 0.5km of the playground.



3: Are children ever in your care?

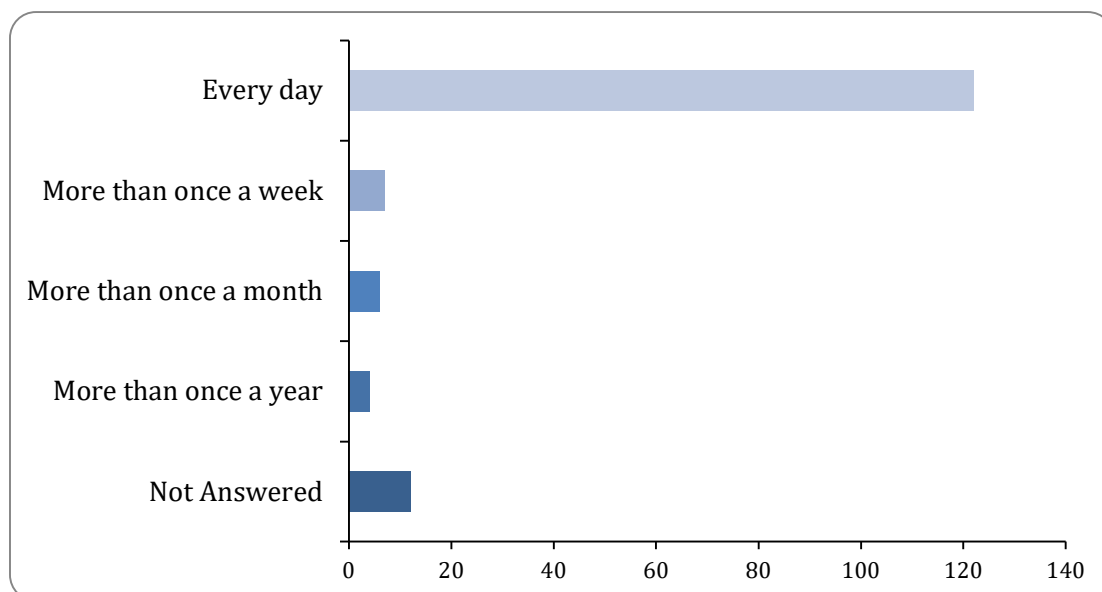
There were 151 responses to this part of the question.



Option	Total	Percent
Yes	139	92.05%
No	12	7.95%
Not Answered	0	0.00%

4: How often are children in your care?

There were 139 responses to this part of the question.

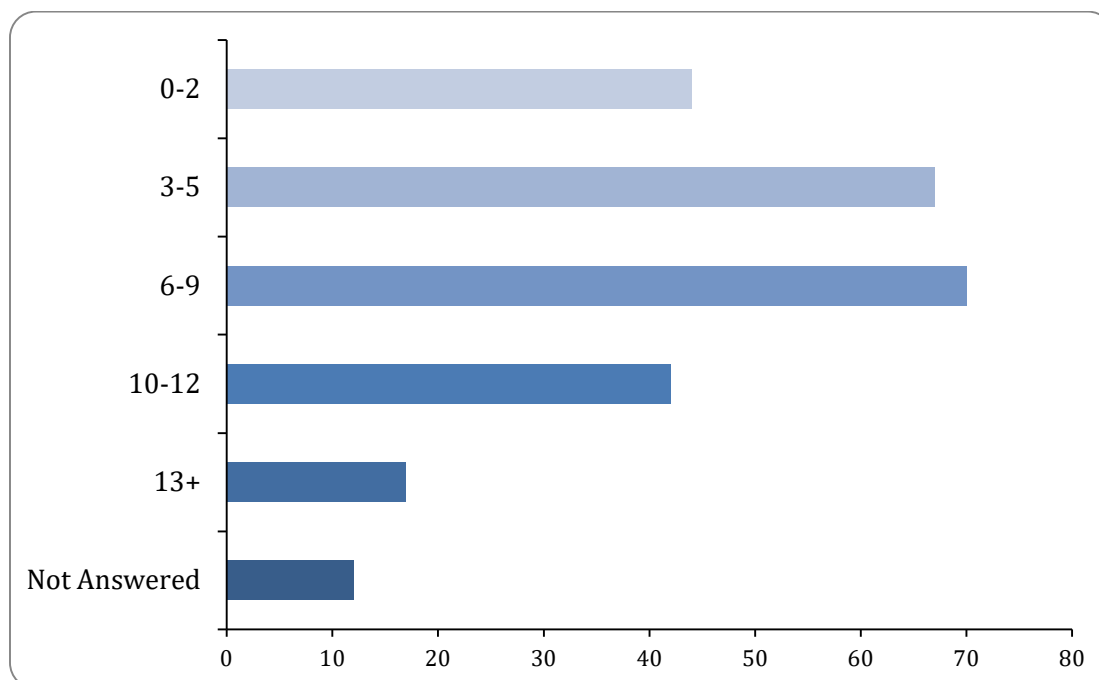


Option	Total	Percent
Every day	122	80.79%
More than once a week	7	4.64%
More than once a month	6	3.97%
More than once a year	4	2.65%
Not Answered	12	7.95%

5: Please indicate the age range of those children (Can tick multiple):

Age of children in care

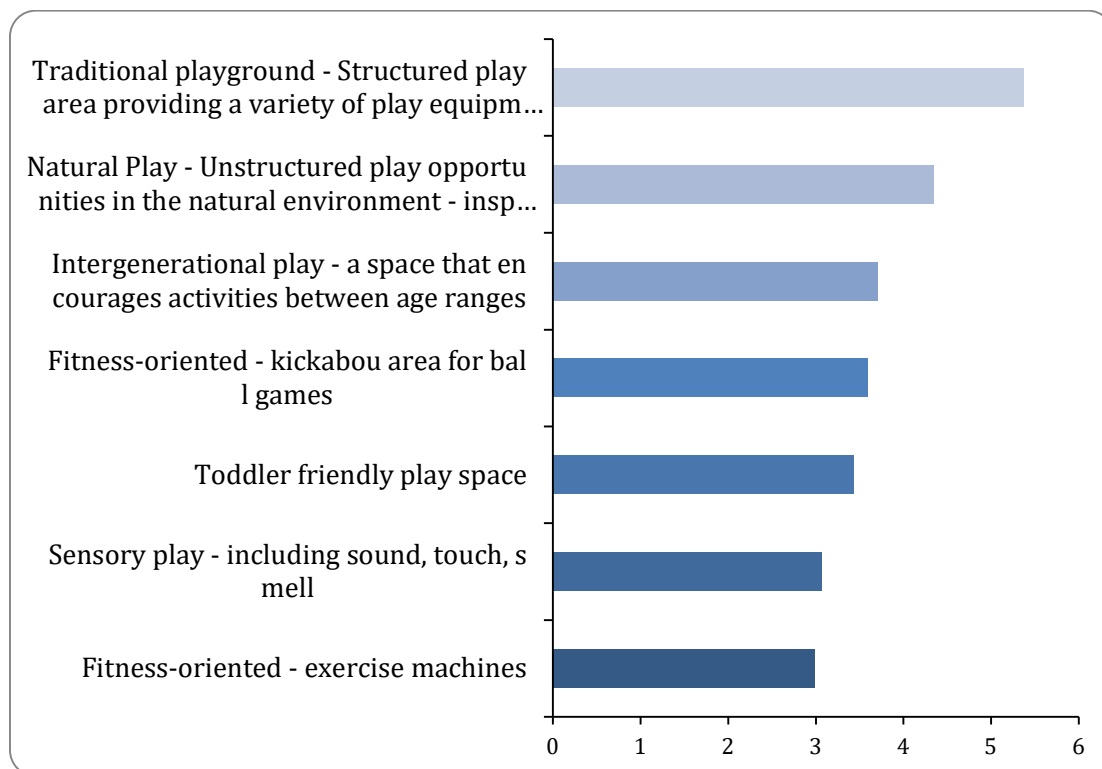
There were 139 responses to this part of the question.



Option	Total	Percent
0-2	44	29.14%
3-5	67	44.37%
6-9	70	46.36%
10-12	42	27.81%
13+	17	11.26%
Not Answered	12	7.95%

6: In order of preference (1 = top preference, 7 = lowest preference), what types of play would you like to see provided for in your neighborhood? You can leave this field blank if you do not have a preference.

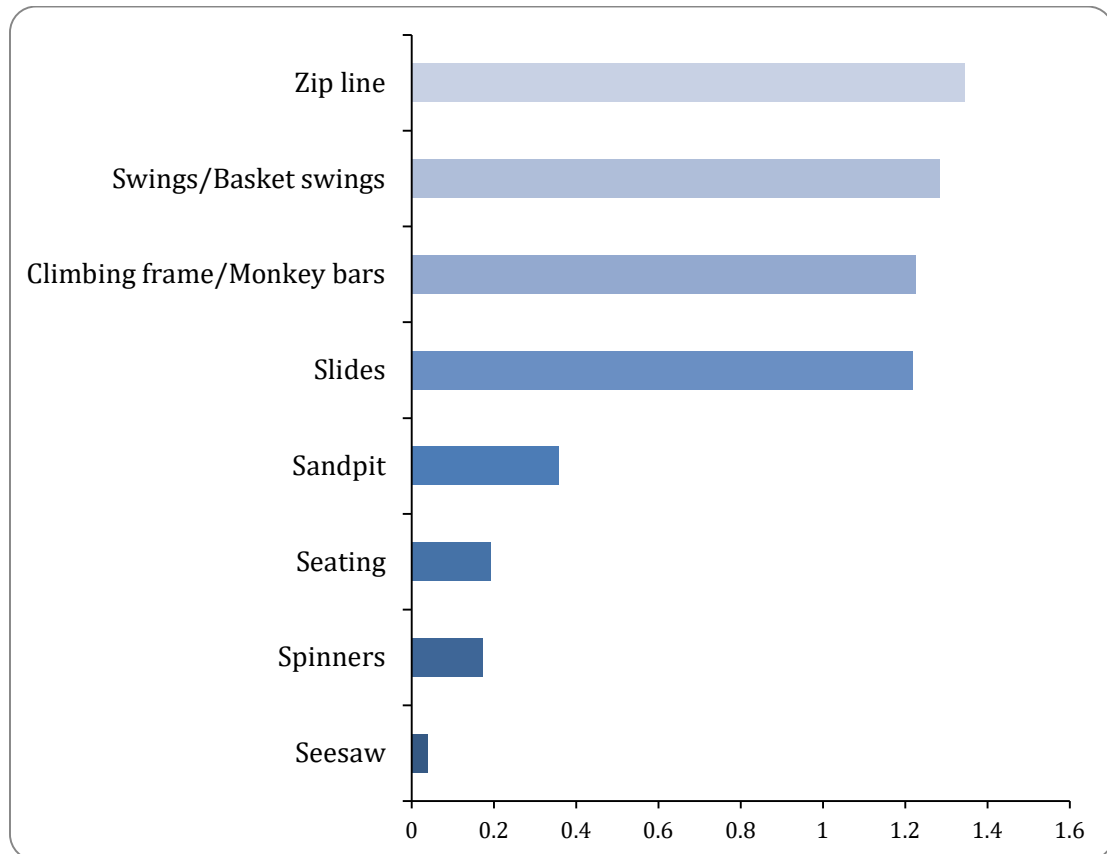
Ranking of 'Favourite types of play'



Item	Ranking
Traditional playground - Structured play area providing a variety of play equipment	5.38
Natural Play - Unstructured play opportunities in the natural environment - inspired by nature, the local landscape features, plants and wildlife	4.34
Intergenerational play - a space that encourages activities between age ranges	3.71
Fitness-oriented - kickabout area for ball games	3.59
Toddler friendly play space	3.43
Sensory play - including sound, touch, smell	3.07
Fitness-oriented - exercise machines	2.99

7: Tick top three favourite types of playground equipment that you or your child would like to see in Windy Arbour Playground. You can leave this field blank if you do not wish to answer.

Ranking of 'preferred playground equipment'



Item	Ranking
Zip line	1.34
Swings/Basket swings	1.28
Climbing frame/Monkey bars	1.23
Slides	1.22
Sandpit	0.36
Seating	0.19
Spinners	0.17
Seesaw	0.04

8: Do you have any further comments on the location and design of play facilities in Windy Arbour Playground?

Main Points Regarding Play Equipment:

Diverse Play Zones: Residents suggested incorporating zones with varied activities, such as trampolines, climbing walls, zip lines, swings, slides, and sensory-friendly areas.

Toddler-Friendly Equipment: Requests for more toddler-specific play apparatus, including height-appropriate climbing frames, slides, and additional toddler swings.

Sports Facilities: Strong demand for basketball courts, football pitches, and multi-use game areas (MUGAs) for older children and teenagers.

Interactive Features: Suggestions for educational play areas, water play, sandpits, musical instruments, and oversized themed structures like pirate ships or animals.

Cross-Generational Elements: Residents proposed adult exercise equipment, boules/petanque courts, and fitness stations to cater to all ages.

Natural Design: Preference for natural materials and aesthetics, avoiding bright plastic and rubber, and integrating features like hills and planting for shelter.

Obstacle Courses: Interest in continuous obstacle courses to challenge children of all ages.

Community Features: Requests for picnic tables, seating, and areas for family activities like chess, Connect 4, or ping pong.

Safety Enhancements: Calls for safer slide designs, crash mats, and improved surfaces to prevent injuries.

Expansion: Suggestions to expand the playground size to accommodate more activities and users.

9. Are there any specific accessibility features or equipment you would like to see in the playground to ensure it is inclusive for children and users of all abilities? For example, wheelchair accessible equipment, sensory-friendly areas, push-chair parking, adult-carer requirements, etc.

Main Points Regarding Accessibility:

Wheelchair Accessibility: Requests for wheelchair-friendly equipment, ramps to play towers, and accessible picnic benches.

Buggy and Scooter Parking: Suggestions for dedicated parking areas to avoid pathway obstructions.

Dún Laoghaire-Rathdown County Council

Sensory-Friendly Areas: Strong interest in sensory zones, including communication boards and sensory beds.

Inclusive Design: Emphasis on ensuring the playground is accessible for children and carers of all abilities by default.

Improved Surfaces: Calls for even, all-weather surfaces suitable for wheelchairs, pushchairs, and scooters.

Sheltered Areas: Requests for covered spaces to provide protection from rain and sun.

Traffic Safety: Proposals for pedestrian crossings, traffic calming measures, and bollards to prevent cars from mounting footpaths.

Note: *Requests for traffic and parking measures have been notified to the Traffic Section.*

Accessible Gates: Need for gates with easier access for prams and wheelchairs.

Bathroom Facilities: Suggestions for toilets and nappy-changing areas to accommodate carers and children.

Note: *The playground is in a local park and serves the local community, it is not a park size where the council would provide toilet facilities, these would normally be provided within a regional and / or destination type playground where the expectation is that a number of people would travel greater distances to use the extensive playground and sporting facilities.*

Lighting and Planting: Requests for better lighting and strategic planting to improve accessibility and comfort in all weather conditions.

Note in relation to Lighting: *Dlr Co. Co. does not generally provide lighting in playgrounds or park areas other than along greenways or sporting venues. This would encourage late evening and nighttime use and create disturbances for local people, possibly encouraging antisocial behavior.*

SUMMARY:

Residents provided a wide range of suggestions for specific equipment they would like to see in the playground. Here is a summary of the most frequently mentioned items:

Play Equipment for Children:

Trampolines: Built-in ground trampolines, similar to those in Nutgrove and other playgrounds.

Slides: Larger, safer slides with better access steps.

Dún Laoghaire-Rathdown County Council

Swings: Additional swings, including toddler swings with safety bars and nest swings.

Climbing Frames: Big climbing structures for older children and smaller, safer climbing frames for toddlers.

Zip Line: A longer and better-maintained zip line.

Sandpits and Water Play: Sandpits and interactive water play areas with pumps and flow systems.

Musical Instruments: Features like musical tubes or bars for sensory play.

Obstacle Courses: Continuous obstacle courses for children of all ages.

Seesaws and Spinners: Traditional playground equipment like seesaws and spinning apparatus.

Themed Structures: Oversized themed equipment, such as pirate ships or animal-shaped jungle gyms.

Sports and Activity Areas:

Basketball Hoops: A basketball court or standalone hoops.

Football Pitches: Small football pitches or multi-use game areas (MUGAs).

Scooter/Bike Tracks: Tracks with gentle ramps and traffic lights for scooters and bikes.

Climbing Walls: Walls for older children and teenagers.

Fitness Equipment: Outdoor gym equipment for adults and older children.

Sensory and Inclusive Features:

Sensory Areas: Sensory-friendly zones with tactile and cognitive equipment.

Wheelchair-Accessible Equipment: Swings, ramps, and play towers designed for wheelchair users.

Communication Boards: Boards to assist children with communication challenges.

Community and Family Features:

Picnic Tables and Benches: Additional seating for families, including wheelchair-accessible picnic tables.

Interactive Games: Features like giant chess, Connect 4, and ping pong tables.

Sheltered Areas: Covered spaces for rainy or sunny days.

These suggestions reflect a desire for a playground that caters to a wide range of ages, abilities, and interests, while also providing spaces for family and community interaction.