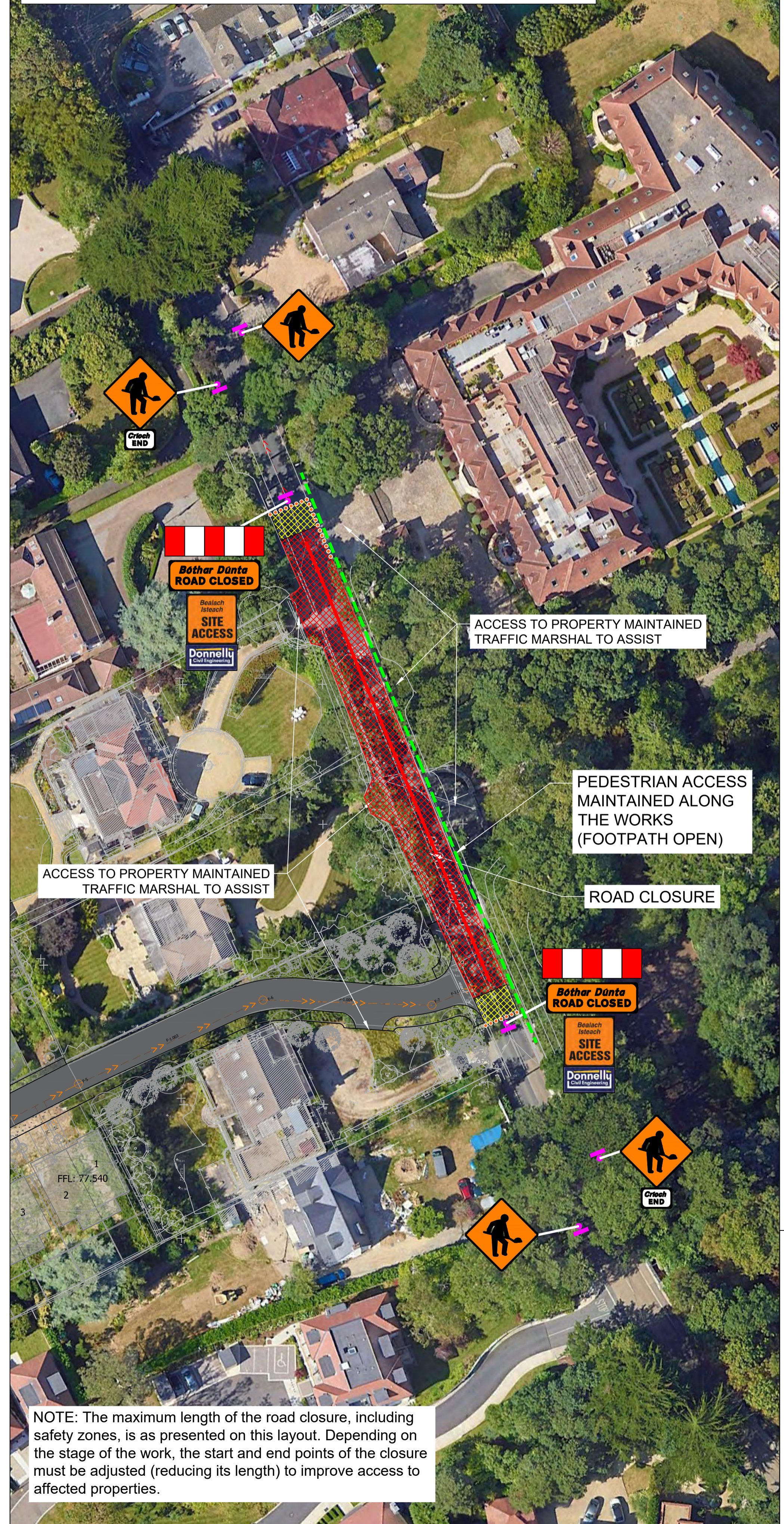
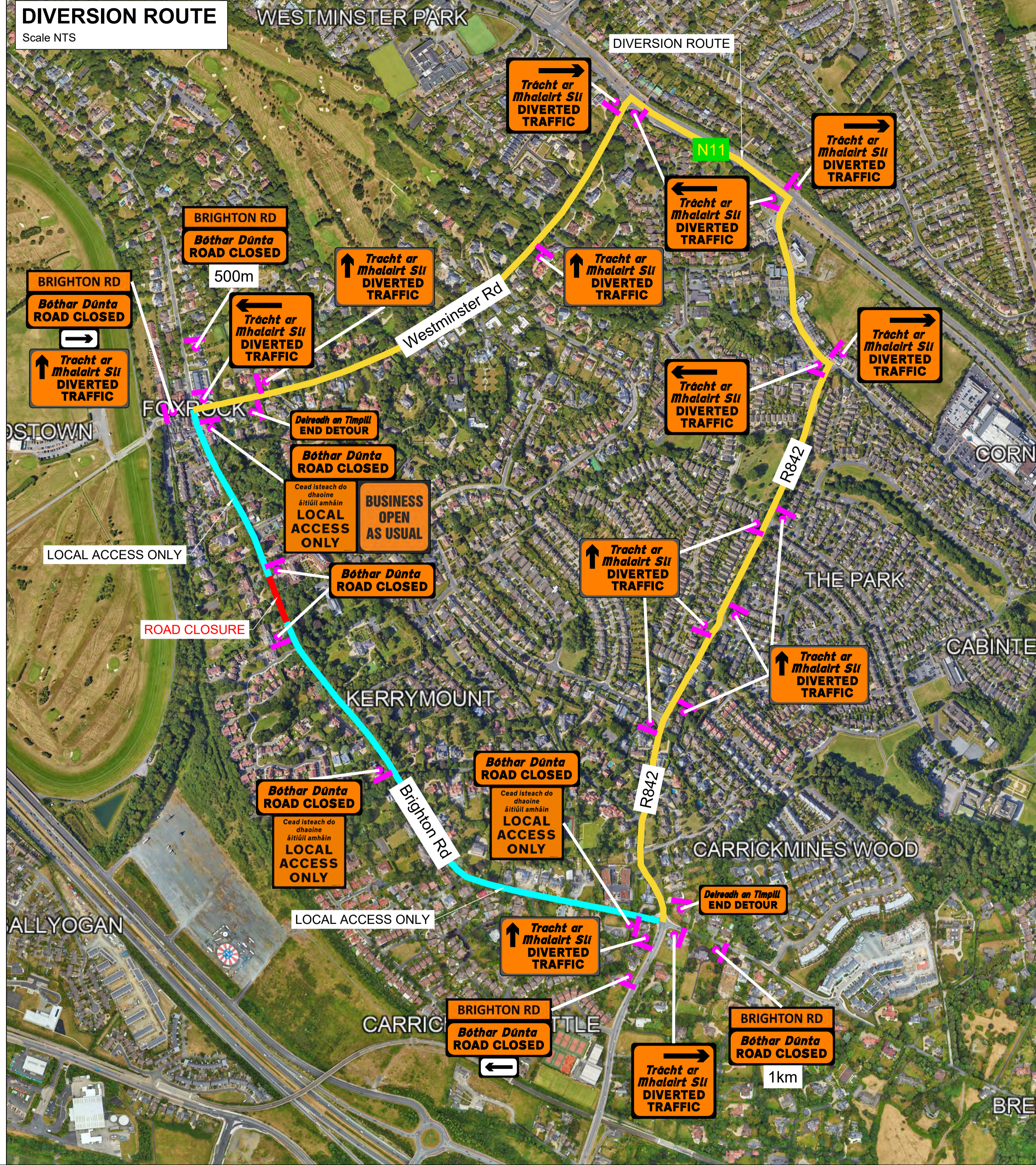


BENTLEY PINES RESIDENTIAL DEVELOPMENT - Brighton Road Closure - TTMP

Scale NTS



NOTE: The maximum length of the road closure, including safety zones, is as presented on this layout. Depending on the stage of the work, the start and end points of the closure must be adjusted (reducing its length) to improve access to affected properties.



KEY / SYMBOLS:

- ROAD CONES
- SIGN LOCATION
- WORKS AREA
- LONGITUDINAL SAFETY ZONE
- LATERAL SAFETY ZONE
- ROAD CLOSURE
- LOCAL ACCESS ONLY
- DIVERSION ROUTE
- PEDESTRIANS

METHOD STATEMENT:

Installation:

- On arrival on site, park TTM vehicle safely and off the carriageway if possible.
- The TTOS identifies the works area and carries out a Risk Assessment.
- Determine a safe place to set up the signage.
- Install the WK 001 Roadworks Ahead signs, which are always the first signs to be installed.
- Install diversion signs in accordance with the design.
- Install the WK 001 with P 110 End plate 20 - 50m after end of works.
- Repeat the above sequence for all approaches to the works.
- When all the signs on the diversion have been erected the TTOS should carry out a Risk Assessment.
- TTM Operatives to implement the road closure, by placing cones or barriers across the carriageway.
- A TTM operative may be required at the closure point to enforce the closure, regulate local access and direct road users onto the diversion route.
- This is particularly important during the early days of the road closure when road users are not familiar with the set up.

Maintenance:

- Maintenance of the installed layout shall be undertaken as required.

Removal:

- Check all works personnel, plant, materials and debris are cleared and site is safe to traffic.
- TTM Operatives to open the road by removing cones or barriers.
- Safely remove all diversion signs.
- Load TTM equipment onto the TTM vehicle.
- The last signs to be removed are the WK 001 Roadworks Ahead signs.
- Check all equipment is loaded securely and safely on the TTM vehicle.
- Make a final check of the site ensuring all items are removed.
- Do not leave signs in place when no works are being carried out.
- Leave site.

Fallen or damaged TTM equipment shall be replaced as necessary. The TTM Crew may remain on site during the works, as required.

NOTES:

- THIS DRAWING IS TO BE READ IN CONJUNCTION WITH ALL OTHER RELEVANT DRAWINGS, SPECIFICATION AND CLIENT REQUIREMENTS
- ALL TRAFFIC MANAGEMENT IN ACCORDANCE WITH THE CURRENT PUBLISHED VERSION OF THE TRAFFIC SIGNALS MANUAL, CHAPTER 8 "TEMPORARY TRAFFIC MEASURES AND SIGNS FOR ROAD WORKS".

CONTRACTOR		COUNTY COUNCIL		PROJECT	
				BENTLEY PINES RESIDENTIAL DEVELOPMENT	
				TITLE BRIGHTON RD - ROAD CLOSURE AND DIVERSION ROUTE - TRAFFIC MANAGEMENT PLAN	
DRAWING NO:	REVISION	DRAWN	CHECKED	APPROVED	
TTMP-01	01	PW	HD	RD	
SCALE:		DATE	DATE	DATE	
NTS		17/02/2025	17/02/2025	17/02/2025	

DESIGN PARAMETERS

Road Lvl (Sub)	1 (iii)
Roadworks Type	A
Speed Limit (km/h)	50
Min. Lane Width (m)	3 (2.5)

SAFETY ZONE

Longitudinal (m)	5
Lateral (m)	0.5
Set Back (m)	-

TEMPORARY SIGNS

Distance (m)	40
Number	2
Min. Size (mm)	600
Sign Visibility (m)	50

CONE SPACING AND SIZE

Longitudinal (m)	3
At Tapers (m)	3
Min. Height (mm)	750

RATE OF TAPER

Taper at H/S (m)	1 in 5
Taper at Lane (m)	1 in 5

TM SYSTEM

Method	Road Closure
Max Traffic Flow (veh/h)	n/a

- GENERAL TTMP NOTES:**
- All works to be carried out in accordance with the latest revisions of Chapter 8 of the Traffic Signs Manual and the Temporary Traffic Management Operations Guidance.
 - The Temporary traffic management plan may only be implemented by a qualified Temporary Traffic Operations Supervisor (TTOS). The TTOS is to be in possession of the relevant CSCS signing lighting and guarding at road works card.
 - TTOS shall be available at all times when traffic management is in operation. Designated personnel to hold Health and Safety at Road Works CSCS card if applicable.
 - Inspections of the traffic management layout are to be carried out on a daily basis to ensure the TM equipment has been set out as specified in the temporary traffic management plan (TTMP) and to ensure the TTMP is operating effectively.
 - Maintenance of the traffic management equipment to be carried out on an ongoing basis throughout the duration of the works.
 - Sign faces shall be of retroreflective material and the retro reflectivity, colours, chromaticity and luminance factors shall be as specified in the TTI Publication on Specification for Roadworks Series 1200 (CCSPW1200) or any further amendments or replacement.
 - Designated works access locations are to be clearly signposted using sign WK 052 as required. Exact location of access signage to be determined by the TTOS on site, referring to Chapter 8 of the Traffic Signs Manual for usage. A supplementary colour code or numbering system may be used with this sign.
 - The layouts and diagrams shown in chapter 8 of the traffic signs manual are based on directing traffic through roadworks using delineators and safety zones rather than on the use of restraint systems. Safety barriers should only be used where the benefits outweigh the risks involved in their installation and use. Risk assessment to be undertaken by the relevant supervisor in relation to excavations in the vicinity of the existing roadway.
 - It is envisaged that unobstructed access shall be maintained for the emergency services for the duration of the works. Should access be required to the site / works areas then this shall be via agreed site access points.
 - Access to local residence and business properties to be maintained at all times and to be coordinated by the TTOS on site.
 - Pedestrian routes to be maintained during the works. Pedestrian routes to be coordinated by the TTOS on site and signed accordingly.