

Kilcross, Sandyford

Public Consultation Summary of Findings

March 2024

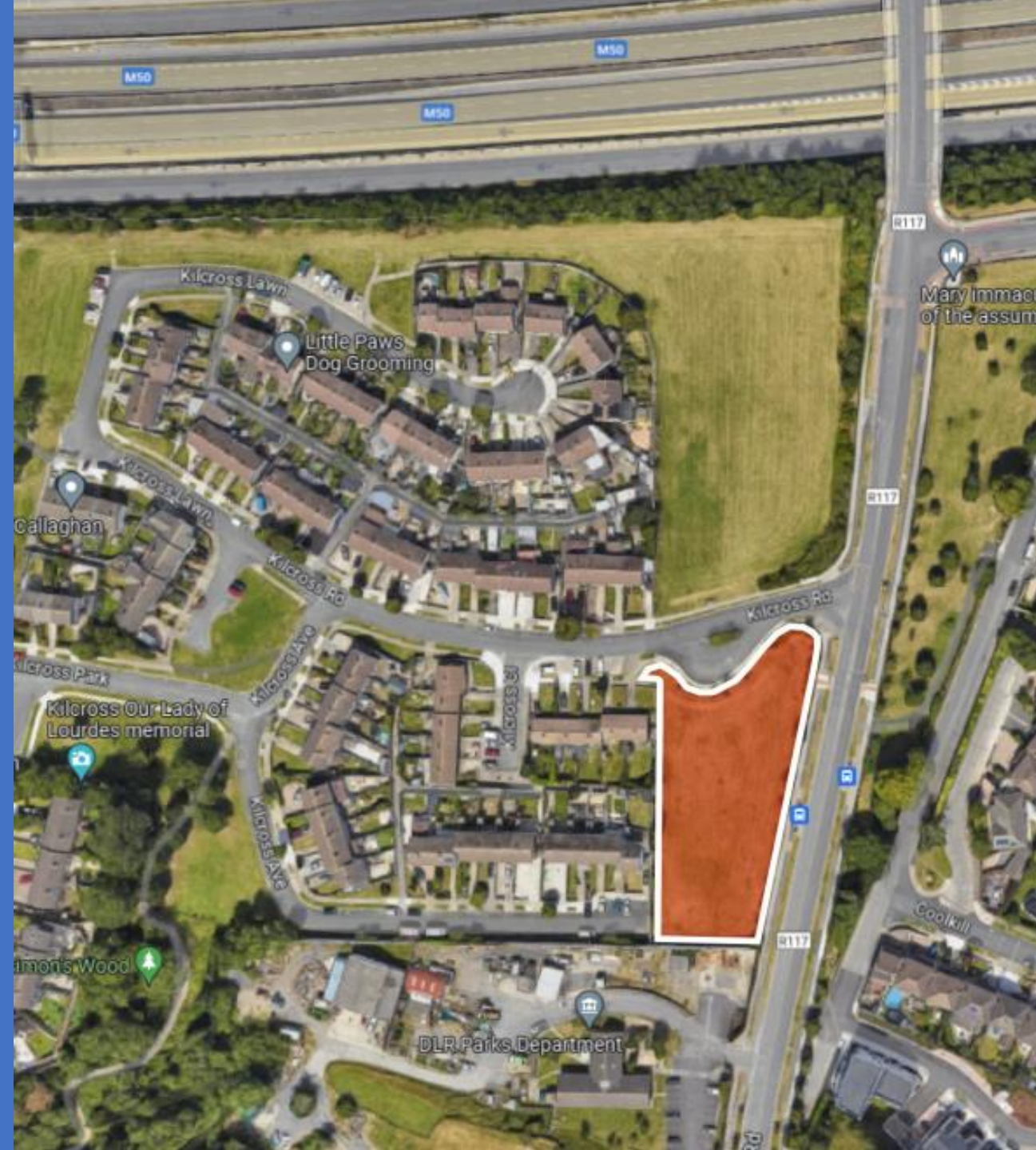


Contents

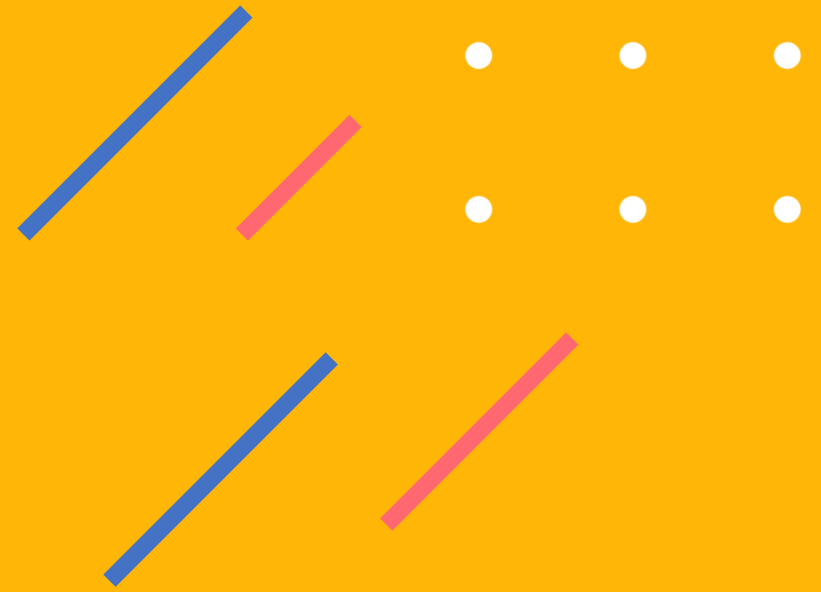
1. Introduction
2. Site Context
3. Stakeholder Mapping
4. Engagement Activities
5. Engagement Findings and Responses
6. DLR Parks Recommendations

Appendices

- A. Online Survey
- B. School Workshop Drawings



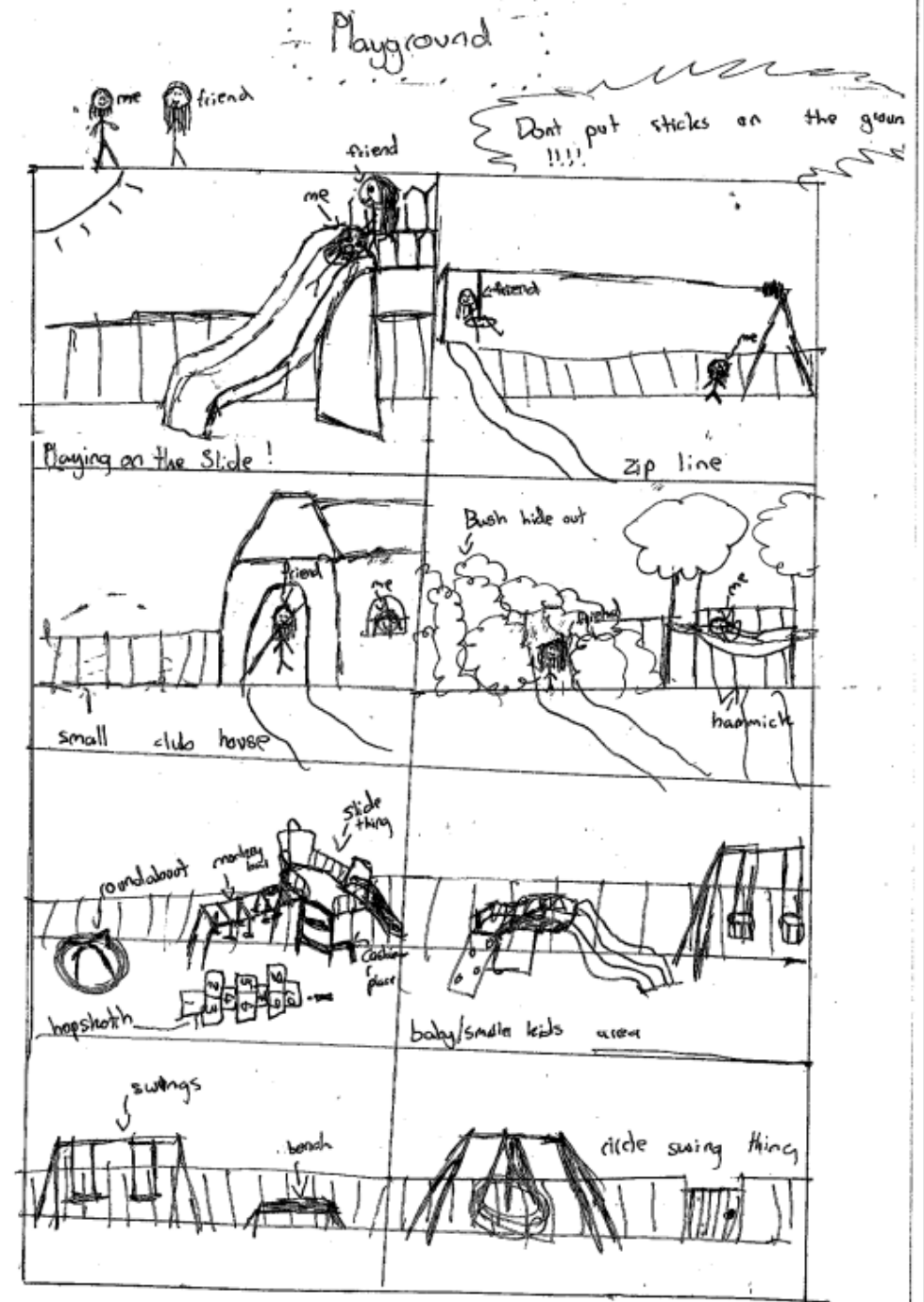
1. Introduction



New Play Space in Kilcross

Dun Laoghaire Rathdown County Council (DLRCC) are undertaking new play spaces at Kilcross, Sandyford. A DLR Play Policy was adopted in 2023 which establishes a set of goals, objectives and actions to enhance play opportunities in the most accessible and inclusive way throughout the county. The actions arising include the refurbishment of existing play spaces and the development of new ones where a gap has been identified.

Engagement and collaboration is a key part of the Play Policy which requires that we 'Involve children and young people in the re-imagining of spaces for play, and in the design of new play spaces'. This report details the non-statutory engagement with the local children and young people, schools, and other members of the community and build trust for a successful outcome.



DLR Draft Play Policy

National Policy Framework for Children & Young People
2014-2020 'Better Outcomes Brighter Futures'

5 national outcomes :

1. Active and healthy to maximise physical and mental well-being
2. Achieving full potential in all areas of learning and development.
3. Safe and protected from harm
4. Have economic security and opportunity
5. Connected, respected and contributing to their world.



Dún Laoghaire-Rathdown County Council

Play Policy 2023-2028

Children's play is any behaviour, activity or process initiated, controlled and structured by children themselves; it takes place whenever and wherever opportunities arise.

(UN Convention on the Rights of the Child, Article 31)

Common barriers to play

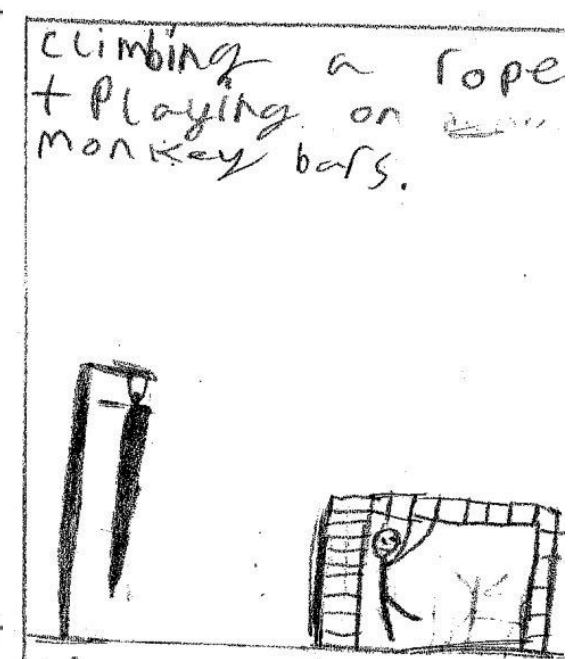
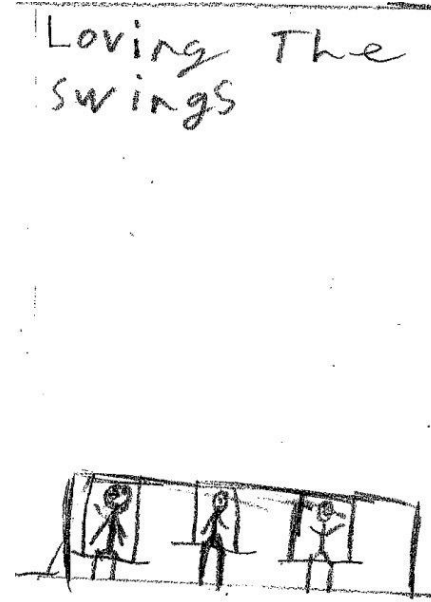
Common barriers to play identified in the *DLR Play Policy 2023 - 2028* include:

- The intersection of **large roads**, the presence of bridges and **motorways**.
- Increased **levels of traffic** within residential areas; this **limits traditional street and community play** opportunities due to safety concerns.
- A **loss of accessible public green spaces** which are openly available for children to play.
- A **lack of understanding about the importance of play** and a low level of tolerance towards children playing outdoors **by some** adults in some communities.
- A lack of appropriate play infrastructure e.g., fixed play areas, open recreation spaces, playable public realm etc. to meet the play needs of children and young people.
- Limited opportunities for the **inclusion of children and young people with disabilities or complex needs** within play spaces and environments.



Indicators for success

- Indicators for success identified in the DLR Play Policy 2023 - 2028 include:
- The meaningful involvement of children and young people in the **design and delivery** of spaces and opportunities for outdoor play and recreation.
- **Risk experience:** children's views on the degree of excitement they experience AND Risk opportunities i.e., evidence of a risk-benefit approach being taken to allow challenging and exciting outdoor play opportunities
- **Adult attitudes** to children and young people being outside in the local environment



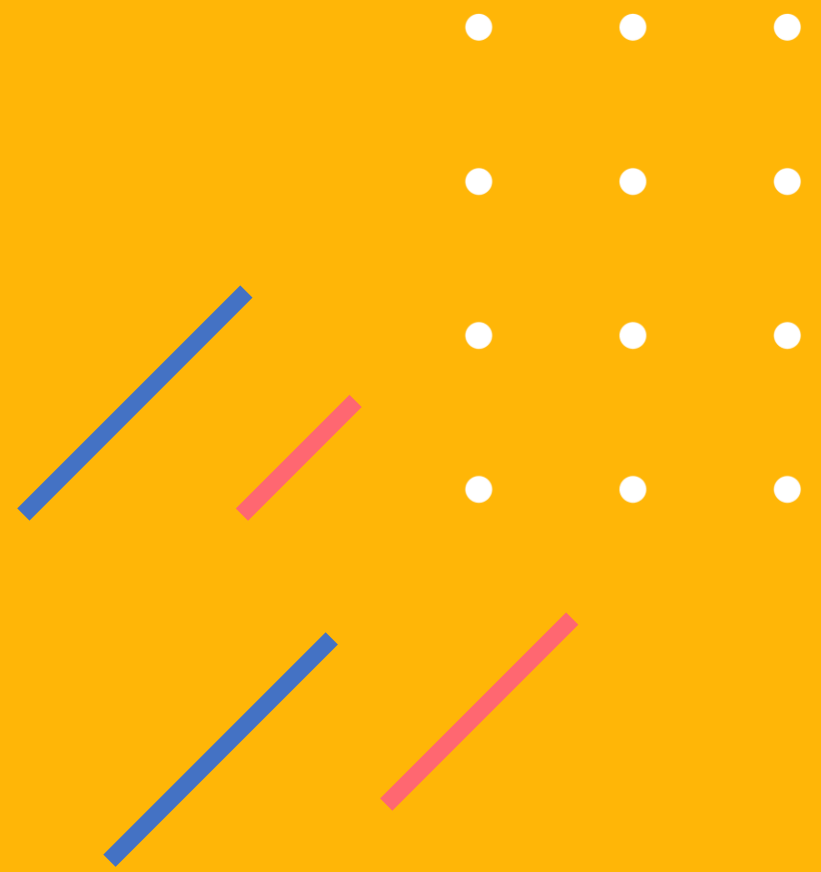
Principles

DLR Play Policy 2023 - 2028



- The concept of **universal design** underpins the Dún Laoghaire-Rathdown Play Policy.
- Everybody living in the county should experience play and have **access** to play opportunities.
- Children and young people have a **right to play** and to have a **say** in how they play.
- Play and playfulness are fundamental to **good health**, development and **well-being**.
- Play **empowers core skills** that support social, intellectual, physical and emotional well-being.
- Play helps people **connect** with their local communities and provides opportunities for fun and enjoyment.
- Everybody should have access to play places and spaces with **high quality** play opportunities, where they can enjoy outdoor free play and **test risk** in stimulating spaces, as well as experiencing **nature** on a daily basis.

2. Context



Demographic Profile: Dún Laoghaire Rathdown



2022 CSO findings state that Dún Laoghaire-Rathdown has experienced sustained population growth of c. 1.2% per annum through each of the last three intercensal periods (2006-2011, 2011-2016 and 2016-2022), comprising a c. 20% increase in total county population in the last 16 years.

The figure for children and young people aged 0-24 years is 69,851 which accounts for 32% of the population and this was broadly in line with national figures. The population can be broken down as follows:

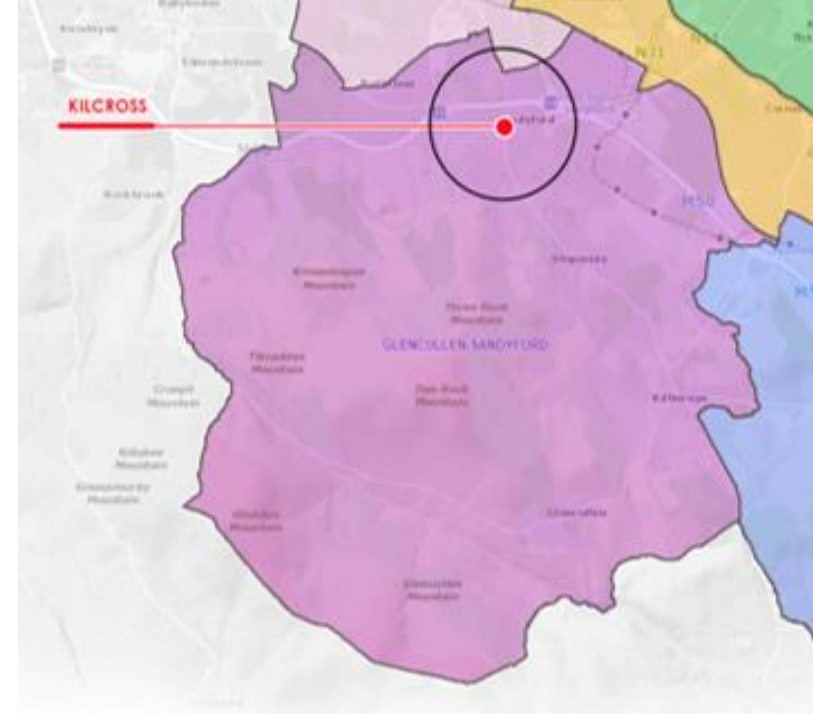
- 0 to 4 years (13,810 or 6.3%)
- 5 to 12 years (21,302 or 9.8%)
- 13 to 17 years (12,682 or 5.8%)
- 18 to 24 years (22,056 or 10.1%)

DLR Play Policy 2023-2028

Demographic Profile: Kilcross

The total population within a one kilometre radius of Kilcross is 9,250 persons. With 26% of the population under the age of 18, they can be broken down into the following age ranges:

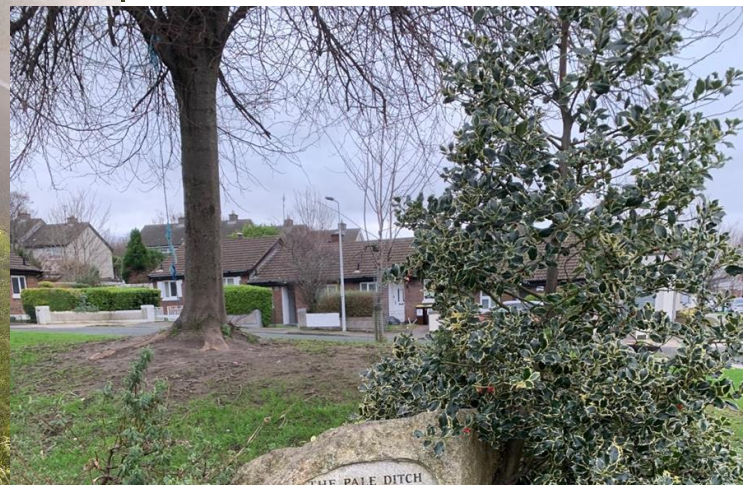
- Aged 0-5: 905
- Aged 6-11: 725
- Aged 12-18: 724



Kilcross

The Kilcross estate is located in Sandyford, County Dublin. It is located on the edge of the historic 'Pale' border area around Dublin with remains of the Pale ditch running through it. Nearby Kilgobbin castle was built to defend the Pale. Nearby Fitzsimon's Wood is a proposed Natural Heritage Area, an example of semi-natural woodland, and a protected habitat for the smooth newt.

There have been long-standing demands for playground facilities since the estate was constructed nearly forty years ago. The location for a playground proposed by Dún Laoghaire Rathdown County Council Parks section is sloped the green area on the left of Kilcross Rd as one enters the estate from the R117.

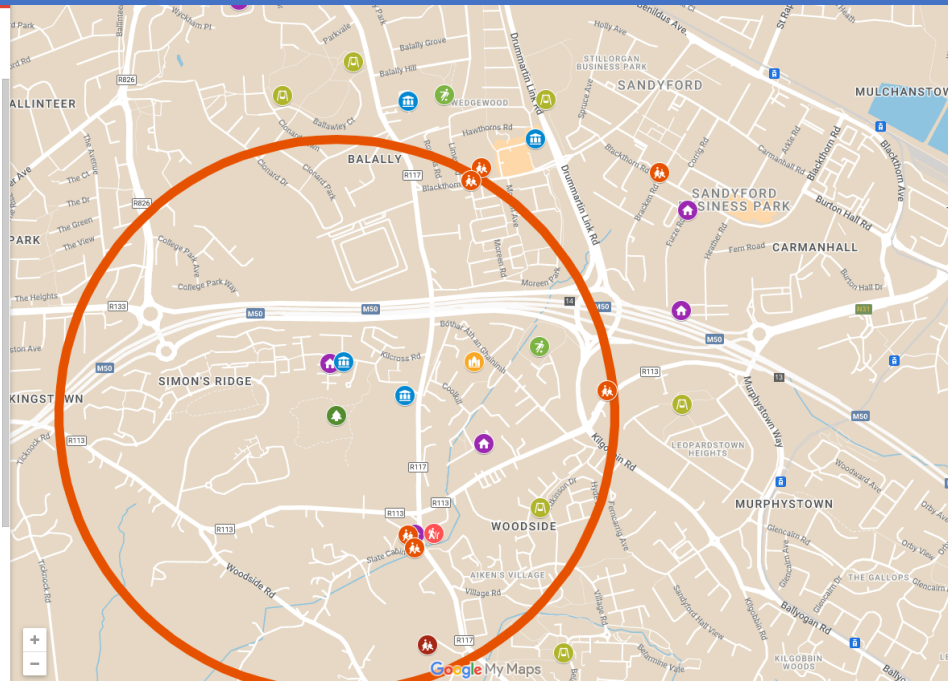


3. Stakeholder Mapping



The stakeholder mapping process identified groups within a 1-2km radius that may have an interest in the development of play facilities in Kilcross. Stakeholder groups identified in the mapping process included those from education, community, and youth sectors. These are outlined in the table opposite. Contact details for each group were established as part of the mapping process.

Organisation/Group Name	Sector
Sandyford Downs RA	Community
Started Playground Campaign	Community
Youth Club organisers	Community
Kilcross Family Resource Centre	Community
Down syndrome centre	Community
Sandyford Community Centre	Community
Sandyford ICA Guild	Social Inclusion
Crosscare youth services	Comm Group
Saint Marys Sandyford	Church
<u>St Marys National School</u>	Education
Balally Family Resource Centre	Community
Encore School of Performing Arts at Sandyford	Education
Southside Travellers Action Group	
Furry Hill Community Centre	Community
Queen of Angels National School	Education
<u>Park Childcare</u>	Childcare within 2km



- Kilcross Youth Club
- Bearna Park Football Pitch
- DLR Parks Department
- Kilcross Resource Centre
- Belmont Playground
- Kilcross Park
- Sandyford Downs
- St. Mary's Sandyford
- Sandyford Community Centre
- The Down Syndrome Centre
- Cross care youth services
- Encore School of Performing Arts at Sandf...
- Queen of Angels Primary School
- Handprints Montessori School
- Cedar Montessori School
- Rosemont School Secondary School
- Park Academy Childcare Beacon South Quar...
- Leopardstown Heights Playground
- Ballawley Playground
- Belarmine Playground
- Playground Ballawley
- Ballaly football field and dogs park
- Blackthorn Park Playground
- Balally Family Resource Centre
- SOUTHSIDE TRAVELLERS ACTION GROUP
- Furry Hill Community Centre

4. Engagement Activities



Engagement Activities

Public engagement activities were carried out by M-CO to get feedback in advance of the playground design process. These activities are outlined as follows:

- DLR CitizenSpace online survey 06.01.24 – 02.02.24 (see Appendix)
- 1 x Public workshop – 18.01.24
- Kilcross Youth Group workshop – 20.01.24
- School workshops in St Marys National School, 11.01.2024 with 3rd and 5th classes and artist Elida Maiques

Promotion of Engagement

A number of ways were used to promote the engagement including:

- DLR CitizenSpace consultation hub
- Social media posts by DLR CoCo
- Leafletting locally to streets in Kilcross Estate area
- Direct email contact with stakeholder groups
- Emailed updates to local public representatives



Parks: New Playground at Kilcross, Sandyford

New Playground at Kilcross, Sandyford

Dún Laoghaire – Rathdown County Council is planning to create a new, inclusive, local park play space, where children of all ages, abilities and backgrounds can play, in the Kilcross area of the Sandyford / Glencullen Ward.

Provide your feedback!

Public Consultation
- Consultation Evening - Thursday 26th January 2024, 7.30pm at Kilcross Community Centre, (Phone 01274 713000 if you plan to attend to kilcrossplayground@mco.ie)
- Online survey

Visit dlrcoco.citizenspace

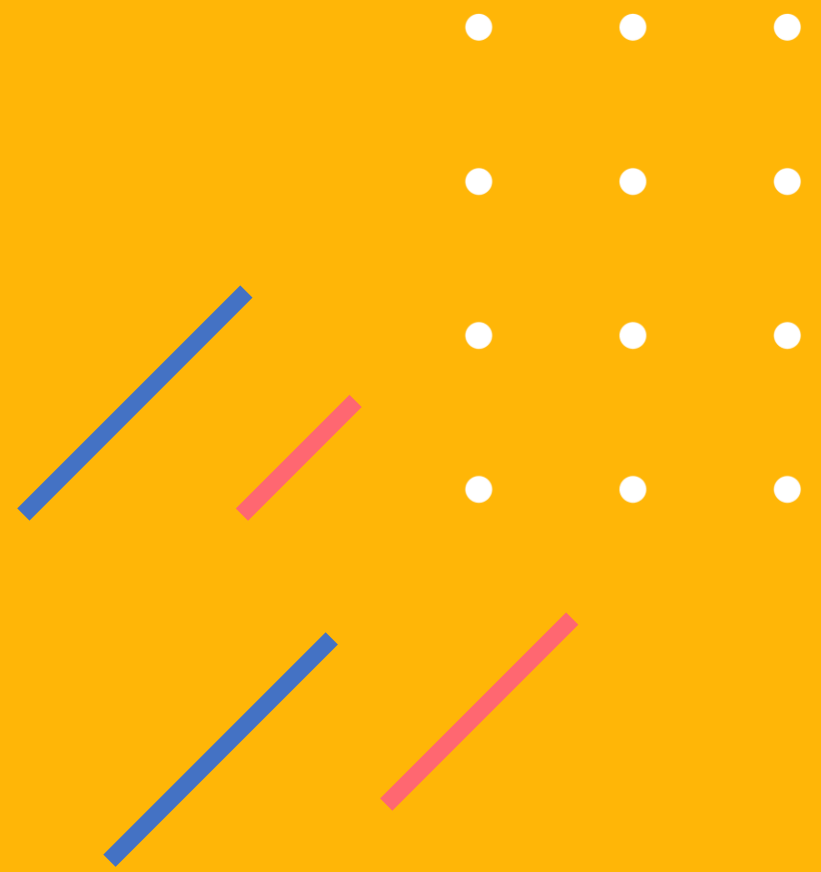
Scan Me:

Overview



Dún Laoghaire – Rathdown County Council is planning to create a new, inclusive, local park play space, where children of all ages, abilities and backgrounds can play, in the Kilcross area of the Sandyford / Glencullen Ward. This catchment has been prioritised for these facilities, as it has been identified as outside the 1km radius of an existing playground, with a population density of 5,000 residents, under the age of 18, per kilometre squared.

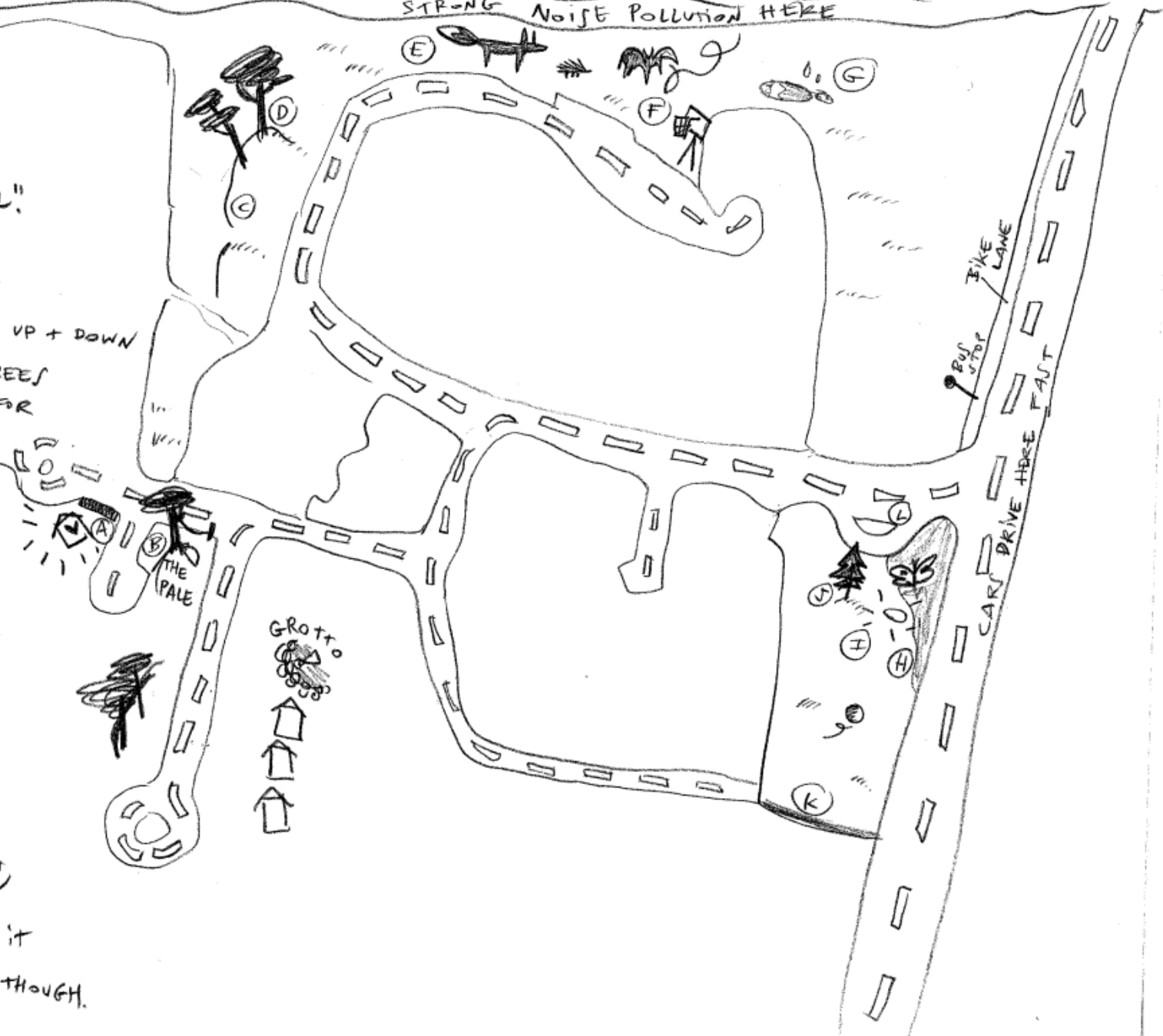
5. Engagement Outcomes and Responses



THE M50 IS A RIVER OF CARS

FUMES POLLUTING
STRONG NOISE POLLUTION HERE

- (A) YOUTH CLUB/ RESOURCE CENTRE, a true hub. Kids play on "THE WALL".
- (B) TREE BY "THE PALE", improved swing.
- (C) MOUNDS + SLOPES TO RUN UP + DOWN
- (D) SITTING SPOT UNDER TREES (TREES ARE IMPORTANT FOR THESE CHILDREN)
- (E) FOXES, BATS AND MANY HEDGEHOGS LIVE HERE
- (F) BASKETBALL HOOP DONATED BY A NEIGHBOUR
- (G) SOGGY, VERY WET UNDERFOOT
- (H) WILDLIFE SPOT, BUTTERFLIES!
- (I) GREAT AFTERNOON SUNLIGHT, LONG SHADOWS
- (J) CHRISTMAS TREE, ADULTS LOVE IT
- (K) WALL FOR HURLING, BUMPY THOUGH.



Workshops: St Mary's National School, Sandyford

Two workshops were held in St Mary's National School (11.01.24) with 3rd and 5th classes and artist and creative facilitator Elida Maiques. The children individually drew what they like in terms of outdoors play. Then they collectively drew on a large sheet of paper with the proposed Kilcross site outlined describing what is there already, including flora, fauna, and the activities that take place there. Then they added to this drawing elements of play that they felt would improve the park.



Workshop: Youth Group Workshop in Kilcross Resource Centre

A workshop was also held for the Kilcross Youth Club in the Kilcross Resource Centre (20.01.24). Similar to the school workshops, creative facilitator Elida Maiques worked with the children to illustrate what they like in terms of outdoors play. Then they collectively drew on a large sheet of paper with the proposed Kilcross site outlined describing what is there already, including flora, fauna, and the activities that take place there. They added to this drawing elements of play that they felt would improve the park.

The youth group workshop also included a walk around the estate guided by the children, so they could show the facilitators where they like to play in the area and what informal play features already exist in the space.



Children's play ideas and observations

1. **Adventure play:** natural play, swings, slides, trampolines, ziplines, climbing wall, treehouse.
2. **Gymnastics / Active play:** exercise machines, monkey bars, climbing and balancing equipment.
3. **Ball games:** football goal, basketball hoop, rebound wall.
4. **Play on wheels:** skateboards, rollerblades, scooters, bikes.
5. **Public realm:** seating, shelter, spaces for reading and gathering, public art.
6. **Facilities:** litter, dog park, bins, public toilets.
7. **Universal play:** wheelchair accessible, sensory consideration.





— KILCROSS PARK —

DLR Parks Response to Children's Workshops

There were many suggestions for specific items of play equipment such as climbing structures, monkey bars, painted games, trampolines, slides, tree houses, zip lines, and play on wheels.

There were also many suggestions for additional facilities such as a rebound wall, goals, and kick-about-area. Additionally, there were some requests for specific types of site furniture, such as seating, picnic benches, bins, toilets and art.

We intend to provide as wide a range of amenities as possible within a local park setting.

Location

- Is there sufficient demand for play facilities here?
- The play space could be located at the front of the site (nearer to Kicross road) to leave space for any future development at the back (possibly a sports clubhouse/community center)
- Concerns about the future development of a Women's refuge opposite the playground site and the associated safety and traffic issues.
- The playground should be located on other nearby sites instead - either within the estate beside the Virgin Mary Statue or outside Kilcross at Sandymore Downs. Have any feasibility studies had been done for other sites?

Safety / Security / Anti-social Behaviour

- Concerns over anti-social behavior at a new playground
- Fear of misuse of playground equipment with some suggesting that it be made fireproof
- CCTV– some asked for CCTV to be installed, others asked for it not to be
- Good lighting is needed
- What is the plan for the continued maintenance of the space by the council?
- Do not want an access route through to Kilcross Avenue from the site

Accessibility/Age range

- Space needs to be designed for everyone – all ages and abilities
- A teen dedicated space is something the area lacks
- Disability friendly space is essential
- Provide inter-generational equipment
- Include some exercise equipment for older people

Furniture and Facilities

- Provide (comfortable) benches / seating
- Include a sheltered area / hangout space/ hut (suggested by teenagers)
- A need for a community space / centre was highlighted
- Provide more public bins

Equipment/ Playground design

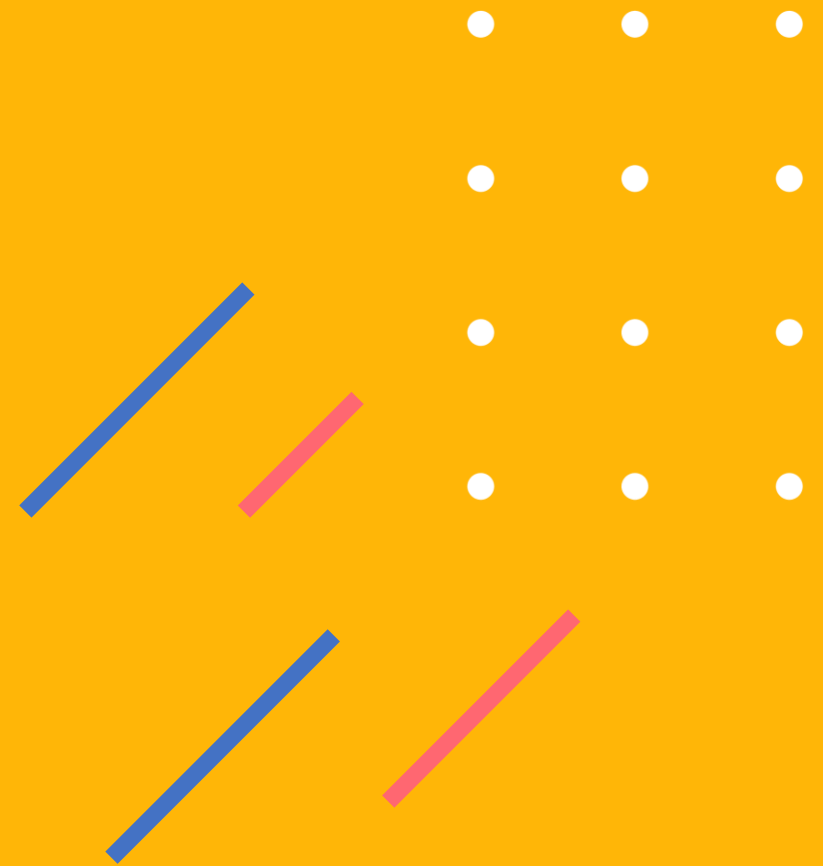
- Provide adult exercise machines
- Wooden balance/ climbing equipment/ monkey bars
- Spread equipment across the estate instead of just on the green – smaller play interventions dotted around
- Use natural materials for equipment
- Provide swings/basket swing
- Include a slide
- Leave open space for free-play or to kick a ball

Car parking/ traffic management

- Concern about parking and traffic management - that the play area in combination with the women's refuge will result in more cars and congestion in the estate
- Locate additional parking at the former bus terminus space near the estate entrance
- Parking is already an issue at entrance to Fitzsimon woods

Online Survey

62 participants took part in the online survey which was open on DLR CitizenSpace from 06.01.24 – 02.02.24



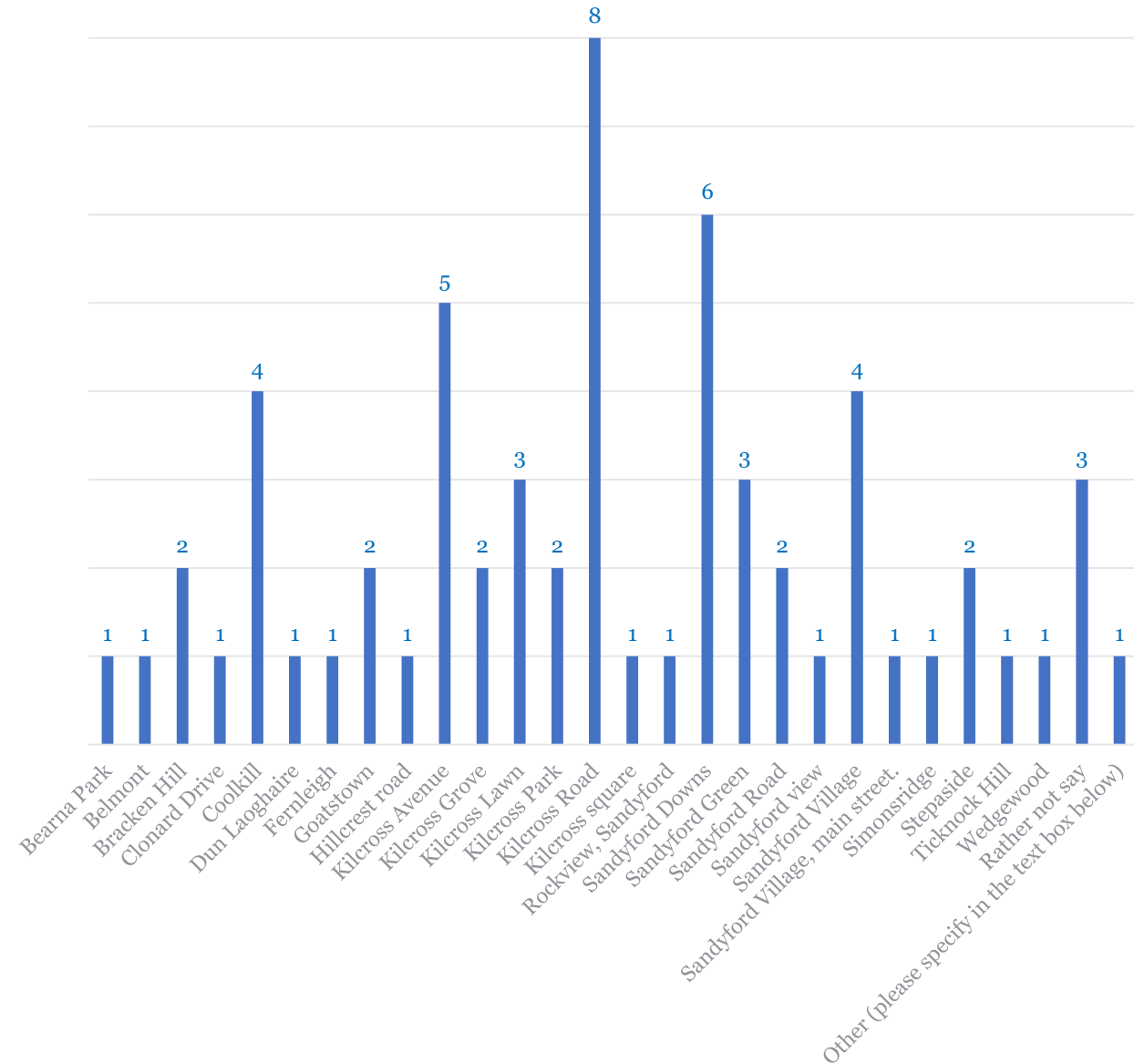
Online Survey Results

Q. Where do you live?

Online survey respondents (total 62) came from a wide variety of places in the Sandyford and wider DLR area. The highest numbers of respondents were from

- Kilcross Road (8),
- Sandyford Downs (6),
- and Kilcross Avenue (5).

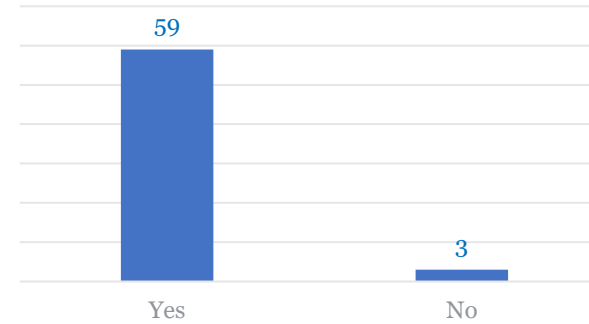
Where do you live?



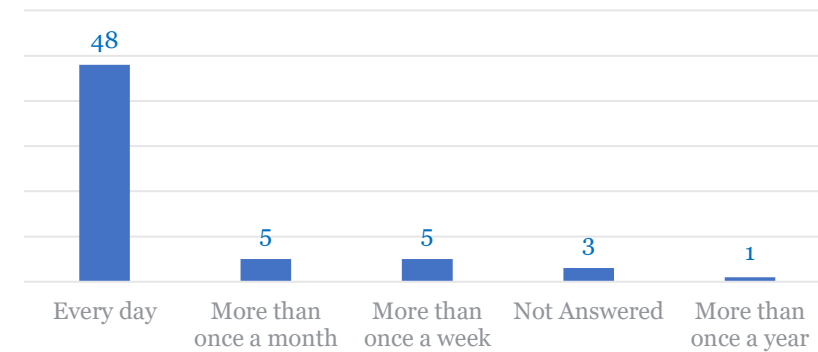
Q. Are children in your care?

The majority of the 62 online survey respondents (n=59 or 95%) care for children and most of these (n=48) had children in their care every day, presumably as parents.

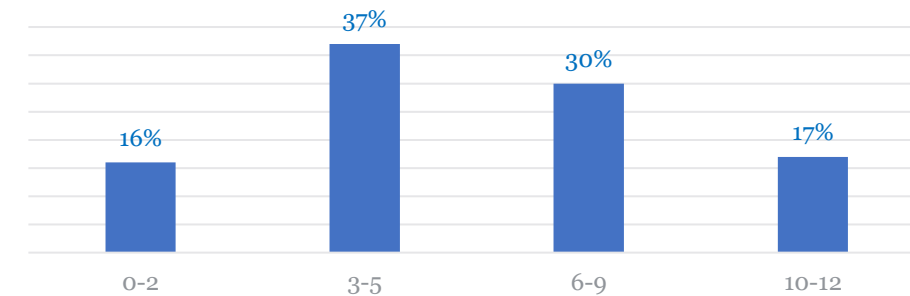
Are children ever in your care?



How often are children in your care?



Ages of children in your care?



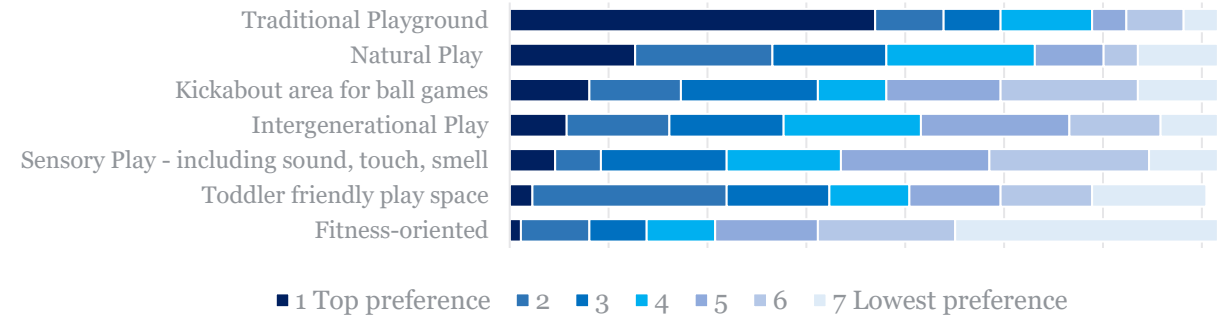
Q. Type of Play and Equipment

The preferred types of playground according to the online survey respondents were traditional play, natural play and a kickabout area for ball games, with similar numbers for toddler friendly, intergenerational and sensory play. Fitness oriented play facilities was the least favoured.

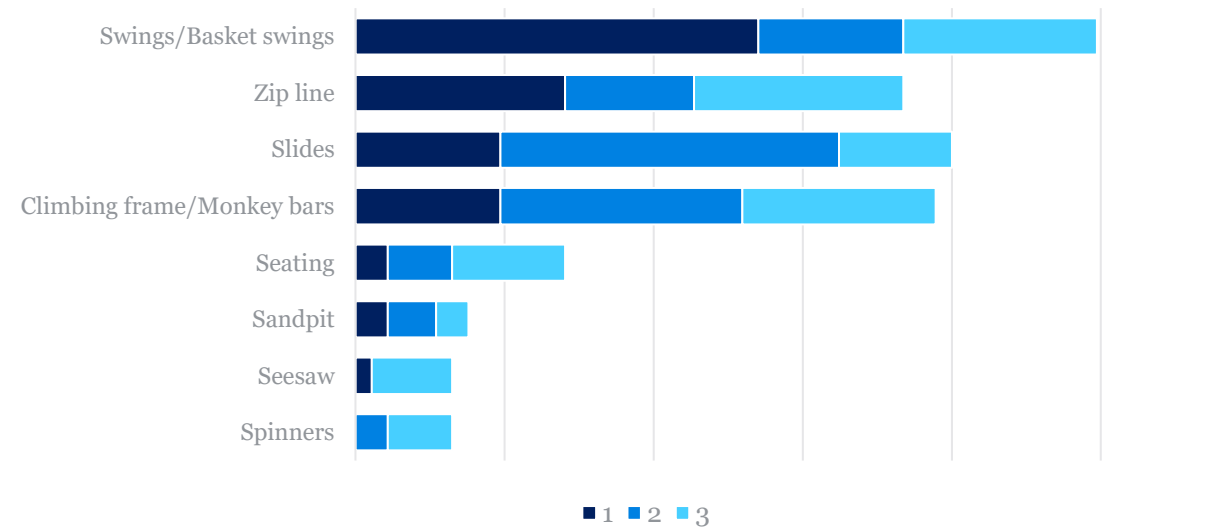
The preferred types of play equipment were;

- Swings,
- Slides,
- Climbing frames / monkey bars,
- with fewer preferring Sandpits and Ziplines.

Preference for what type of play you want to see in playground



Preference for what type of play you want to see in playground



Support for Playground

Sentiment analysis of the online survey comments and emailed submissions suggested that the majority (84%) of respondents were in favour of the addition of play facilities in Kilcross. Some of the feedback comments are included on this page.

“A new playground in the area is essential, especially considering the on-going and proposed expansion of housing in the area.”

“As a local parent and primary school teacher, I would love to see a playground in the area.”

“Delighted this is finally coming.”

“I strongly support the goal of creating an inclusive and accessible play space for children of all ages, abilities, and backgrounds.”

“My son would really benefit from a local play ground close to our home, I am very happy to hear this is in plans for Kilcross. My son has ASD, and loves being outside , swings and slides and sensory are all ideal to include him. This is going to make him very happy I look forward to seeing the playground.”

“As a resident of the Kilcross area in Sandyford, I am excited about the prospect of a new, inclusive playground being developed in our community. I believe that this initiative will greatly benefit our locality, as we have been lacking a playground for a long time.”

“I am very supportive of the playground and it's been warmly welcomed by the residents of Simonsridge.”

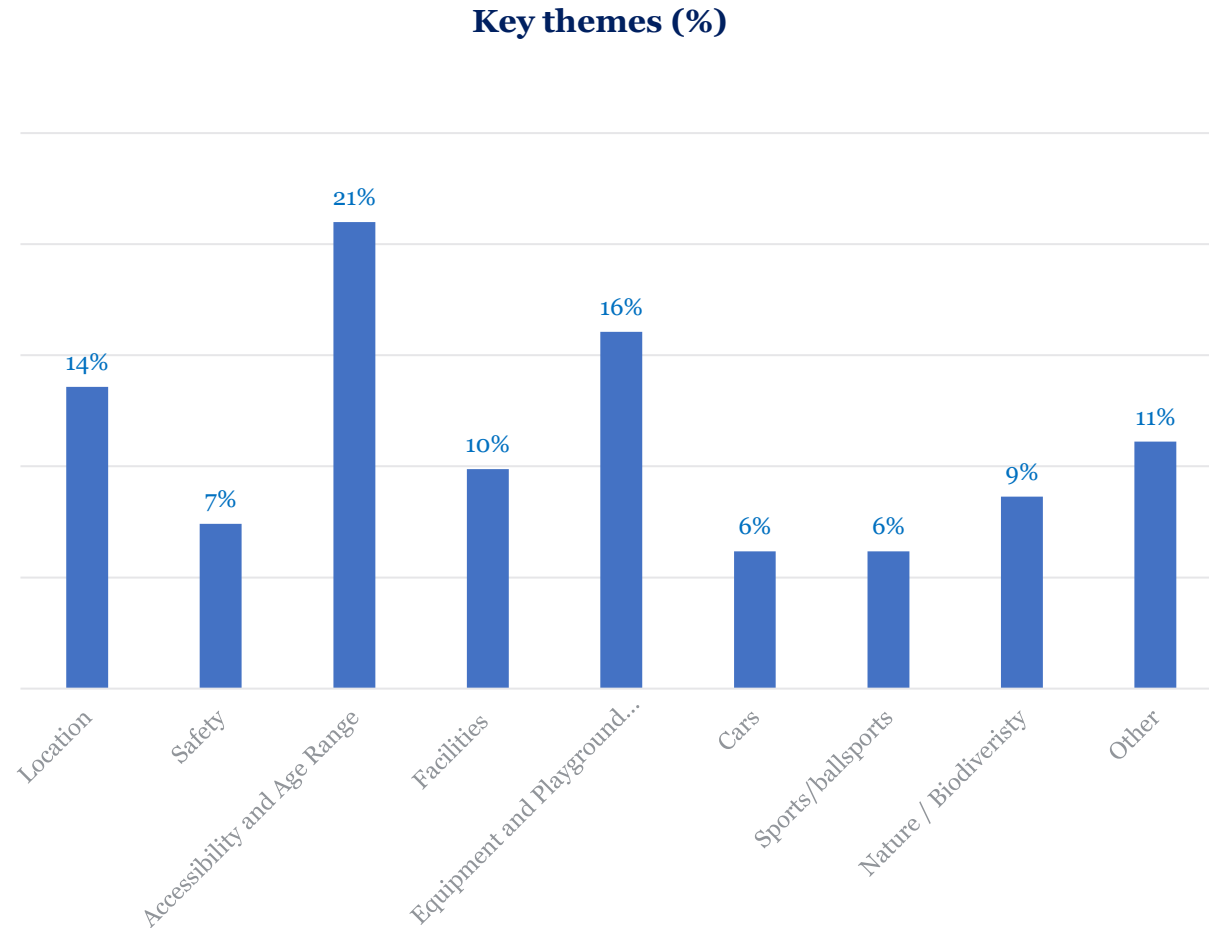
“I am confident that the new playground will have a positive impact on the local community, including the enhancement of recreational opportunities, the promotion of physical activity among children, and the potential for strengthening community bonds through shared play experiences.”

Key Themes (Online and email)

Key hopes and concerns emerged in the online survey comments and email submissions which were thematically evaluated. The key themes and the frequency whereby they were raised are set out in the graphs opposite, with the following categorises;

1. Accessibility and Age Range (21%)
2. Equipment and Playground design (16%)
3. Location (14%)
4. Facilities (10%)
5. Nature/Biodiversity (9%)
6. Safety (7%)
7. Sports/ball games (6%)
8. Traffic / Cars (6%)
9. Other (11%)

More detail on each key theme is set out in below.



1. Accessibility / Age range

- Need for a dedicated teen space in the area
- An accessible and inclusive design
- Sensory equipment/ play opportunities for children with additional needs
- Encourage an inclusive and accessible play space for children of all ages, abilities, and backgrounds
- Separate spaces for toddlers and older children
- Wheelchair accessible equipment

2. Equipment and Playground design

- Several suggestions for balance/ climbing equipment and play structures (monkey bars, rope climbing, rock climbing)
- Requests for multiple sets of swings – for babies and older kids
- Include learning posters, such as Irish sign language, alphabet, and sensory boards
- Provide bike and scooter parking
- Some submissions mentioned soft, all-weather flooring would be preferable to grass or wood fibre mulch
- Avoid wet pour and hard surfaces
- Natural, imaginative and creative play were mentioned a number of times as important features to consider in the design
- A design to encourage free movement and strength and focus play
- Include a small fish pond

3. Location

- Was there consideration of the playground proposal submitted from the Kilcross residents and Kilcross Youth Club?
- The current site highlighted within Kilcross is taking away the last final large green space for the children of Kilcross for free play and ball activities
- Placing the playground near the small park in between Coolkill and Kilcross (green area with Virgin Mary statue), would foster community integration with all Sandyford residents, not just benefiting Kilcross but the broader community
- Location should not impact older residents - This should be considered in placement
- Locate the playground on the green space by the Virgin Mary statue instead of the proposed site
- Number of young children in the estate not large enough to justify this location choice

4. Facilities

- Need for more benches and seating in the area
- Provide more bins
- Provide sheltered areas for winter months
- Include a drinking water fountain

5. Nature/ biodiversity

- Would like to see natural materials used in the playground equipment
- Requests for the play space to be built around existing nature/trees and to incorporate the existing topography of the site into the design
- The space would benefit from some landscaping and tree planting - the green space as it currently exists is very bare and unused

6. Safety/anti-social behaviour

- Proximity to the busy Sandyford Road is a safety concern
- Enclosure of the play facilities is important due to proximity to the road
- Concerns about anti-social behaviour and vandalism of play equipment
- Concerns about noise at night
- Some calls for CCTV to be installed
- No shrubs/planting around the boundary area of playground to ensure clear visibility and supervision of children
- Self closing gates needed for a playground

7. Sports/ ball games

- MUGA/ space for all ages on proposed Kilcross site and playground for smaller kids on the 'Virgin Mary' green space
- All weather sports pitch needed
- Will there be open space left to kick a ball?

8. Cars/parking/traffic management

- Concerns over driveways being blocked by visitors using the playground
- Concerns about traffic management with increased car numbers due to playground and future women's refuge development
- What specific measures are proposed to mitigate traffic concerns?

9. Other

- Sandyford Road is a barrier/border between the two communities on either side of the road. Could the playground be designed to improve this community connection/integration? Easy access for both communities is important
- Residents do not want a walkway/access route through from the site to Kilcross avenue
- Better and open communication should be come from the council in relation to any decision on the location and feedback from the consultation process. There is a lack of trust in the public consultation feedback being listened to by the council

DLR Parks Response to Public Feedback (Workshops, online survey and email)

Location

The DLR Play Policy (2023-2028) sets out a catchment area based on a 1km radius around each playground (for ages 0-12). We analysed the demographic need for play areas and undertook an extensive assessment of the existing play facilities within the County, to determine the coverage levels, and identify gaps in playground provision. The Kilcross location has been identified as a gap in the provision of play facilities. The proposed site has been selected as the most suitable location, as it will provide coverage to the greatest number of households. Census figures indicate that there are approximately 1,630 children aged 0-11 living within 1km of this site. This is considered sufficient to warrant play facilities here. The proposed site is also currently zoned as public open space in the County Development Plan, which is appropriate for the development being proposed. Furthermore, it is not identified as being within a Zone of Archaeological Potential, on the list of Recorded Monuments and Places. Other locations suggested through the public consultation process do not meet all of these criteria.

The public consultations did highlight several local conditions and park uses which will be considered in the design. These include the current use of the green area for informal kickabouts, as a gathering area for community events, as a yoga space and the importance of existing features such as the Christmas tree and the biodiversity area. The desire to retain a space to the rear of the site, to facilitate the future development of a community building, has also been noted and the design will reflect this. The future development of a community building is not being considered at this stage, nor is this part of any Council plan currently. Requests to not create a new access route from Kilcross Avenue, and concerns in relation to access here have also been noted. We do not intend to create a new access at this location but doing so would reduce the likelihood of anti-social behaviour.

Safety/Security/Anti-social Behaviour

This open space is already reasonably actively used and there is some existing passive surveillance provided by the adjacent roads. Increasing social activity and maintenance visits by providing children's play, should further reduce incidences of antisocial behaviour. The new proposals will be designed to be visible and to discourage anti-social behaviour and the equipment will be robust.

General concerns in relation to anti-social behaviour should be reported to the Local Policing Fora for Sandyford/Stepaside. Members of the public can highlight issues to be reviewed at the Local Police Fora meetings, by contacting the Community and Cultural Development Department of Dún Laoghaire-Rathdown County Council at 01 205 4893. Immediate concerns in relation to anti-social behaviour should be reported to Stepaside Garda Station on 01 6665700.

It is currently not intended to install CCTV for the playground due to GDPR restrictions.

DLRCoCo do not normally light local playgrounds and it is not intended to provide additional lighting as part of this project.

Age Range

The requirements for children's play changes as they grow and are loosely categorised (0-5 / 6-11 / 12-18) to best provide for the needs of each age range. Toddler and infant playgrounds (0-5) feature low-level play structures, and gentle inclines, to encourage sensory exploration and fine motor skill development. Play designs for children aged 6 to 11, feature greater challenges for motor, social and sensory development, with more challenging activities to promote physical coordination, social skills and cognitive engagement. A catchment radius of 1km around each local playground is set out in the Dlr Play Policy (2023-2028), for ages 0-11. Census figures indicate that there are approximately 1,630 children living within a 1km of this site which is considered sufficient to warrant play facilities here.

It is considered that children aged 12+ can generally undertake activities that challenge them at a more adult level. In the 12–18-year bracket, a catchment radius of 3km is considered by Dún Laoghaire-Rathdown, to be a reasonable distance to expect, that a teenager could travel, to access suitable age range recreation facilities.

Current facilities available for teenagers within a 3km radius of this site include:

- MUGA facilities at Moreen, Belarmine, and Leopardstown Heights.
- Outdoor fitness areas at Ballawley Park, Fernhill House & Gardens.
- Basketball at Ballawley Park.
- Calisthenics at Fernhill Park and Gardens.

A potential teen space has been identified in Fernhill Park and Gardens in the dlr Play Policy and it is intended to develop these facilities in the future. Our most recent teen space opened adjacent to the Meadowbrook Leisure Centre in 2023.

Accessibility

DLRCoCo aim to provide an inclusive environment in all playgrounds by providing a range of public play opportunities that are accessible to those who have additional needs, such as physical, psychological, auditory, or sensory challenges. Universal design, inclusivity and accessibility are considered critical to successful playground design and will be incorporated.

Concerns in relation to the barrier created by Sandyford Road are noted. The new playground proposals will include additional footpaths, and a direct connection to the existing pedestrian crossing on Sandyford Road to improve the connection to communities on either side of the road.

Types of Play, Equipment and Design

The public consultation process highlighted that traditional play was the strong preference, with natural play as the preferred second option, for the type of playground being proposed. The use of natural materials was also suggested several times. There were many suggestions for specific items of play equipment such as climbing structures, swings (including baskets and toddlers), slides, spinners, zip lines, monkey bars, balance beams, Sand pit, inclusive play, educational play, sensory play, agility play, and natural play. There were also many suggestions for additional items such as a skills wall, goals, kick-about-area, exercise equipment, a fishpond, and a MUGA.

DLRCoCo intends to provide as wide a range of amenities as possible within a local park setting. The desire to retain the existing kick about area has also been noted, and this will be incorporated into the design proposals.

Furniture and Facilities

The public consultation process highlighted a strong interest in the use of natural materials for the space which will be taken into consideration in the design.

There were also many requests for specific types of site furniture, such as seating, picnic benches, fencing/railings, self-closing gates, bike parking, bins, lighting, multi-lingual signage, shelters, accessible toilets, book huts, notice boards, and water fountains. While we endeavour to provide as many facilities as possible these will be considered in the context of the scale and budget of a local playground project.

Car parking and Traffic Management

DLRCoCo are encouraging a shift to more sustainable transport modes, which will require a strong focus on limiting the supply of destination parking. It is the policy of the Planning Authority to restrict car parking provision, especially for leisure type facilities. It is intended that this will be a small local playground for use by local families who are encouraged not to drive. It is not intended to create a destination playground or to increase vehicular traffic in the area. Cycle parking will be provided.

Nature and Biodiversity

DLRCoCo acknowledge that this site presents a wealth of natural play opportunities, and intend to retain, enhance, and expand on these. The design shall incorporate natural materials and shall blend with the surrounding environment. The desire to retain the existing biodiversity of the site, including the Holly and the Christmas Tree, has also been noted, and this will be incorporated into the design proposals.

This project is being developed in consultation with the DLRCoCo Biodiversity Officer, who is assessing the proposals as they develop to minimise environmental impacts and maximise environmental enhancement opportunities. Appropriate Assessment (AA) screening shall also be undertaken to determine whether the project, alone or in combination with other plans and projects, is likely to have significant effects on any Natura 2000 sites, in view of their conservation objectives.

6. Recommendations



DLR Parks Recommendations

Based on the majority positive feedback in favour of the development of a playground in Kilcross, DLRCoCo recommends proceeding with a new play space for ages 0-5 and 6-11, taking into account feedback received during the public consultation.

The public consultation process highlighted that traditional play, was the strong preference, for the type of playground being proposed, with natural play, as the preferred second option. The holistic enhancement of the space as a social hub, with seating, and intergenerational play opportunities was also requested frequently, as was the incorporation of activities (ball play, yoga, and community events), and community initiatives (wildlife spot/Christmas Tree), which occur in the space where the playground is proposed.

The children's consultation highlighted multiple types of play and equipment with a strong focus on adventure play, active play, ball play and play on wheels. These suggestions have been collated and will be put forward for consideration in the design. Additional paths will also be installed to create a universally accessible space, and a direct connection between the playground and the existing pedestrian crossing.

Appendix



Playground Consultation, Kilcross, Sandyford

Dún Laoghaire-Rathdown County Council wishes to develop the local playground facilities in Kilcross, Sandyford.

The proposed playgrounds will principally cater for local children of mixed age groups up to twelve with supervising adults. This is a pre-design stage consultation; the information provided will help the design to deliver a quality design with a higher play value for the local community.

We appreciate you taking the opportunity to be involved.

1. Where do you live? (Kilcross)

- Kilcross Road
- Kilcross Avenue
- Kilcross Park
- Kilcross Lawn
- Sandyford Green
- ~~Coolkill~~
- Other (please specify) TEXT BOX

2. Please indicate your age range:

- 13-17
- 18-24
- 25-34
- 35-44
- 45-54
- 55-64
- 65+

3. Are children (0-12years) ever in your care?

- Yes, as a parent
- Yes, as a grandparent
- Yes - other relation
- Yes- other carer
- Never (go straight to Q7)

4. How often are children in your care

- Every day!
- More than once a week
- More than once a month
- More than once a year

5. Please indicate the age range of those children (Can tick multiple):

- 0-2
- 3-5
- 6-9
- 10-12

6. In order of preference (1=top preference, 5=lowest preference), what types of play would you like to see provided for in your neighborhood? (WITH IMAGES)



Natural Play – Unstructured play opportunities in the natural environment - inspired by nature, the local landscape features, plants and wildlife



- Traditional Playground – Structured play area providing a variety of play equipment.



- Fitness-oriented (exercise machines)



- A kickabout area for ball games



- Intergenerational Play – Provide a space that encourages activities between age ranges.



- Sensory Play – sound, touch, smell



- toddler friendly play space



7. Tick top three favourite types of playground equipment that you or your child would like to see in Kilcross

- Swings / Basket swings
- Slides
- Climbing frame/monkey bars
- Seesaw
- Spinners
- Sandpit
- Zip line
- Seating

8. Do you have any further comments on the location and design of play facilities in Kilcross?

9. If you wish to receive further information as the project progresses, please provide your email address below:

St Mary's National School, Sandyford

Workshops for **Kilcross** playground

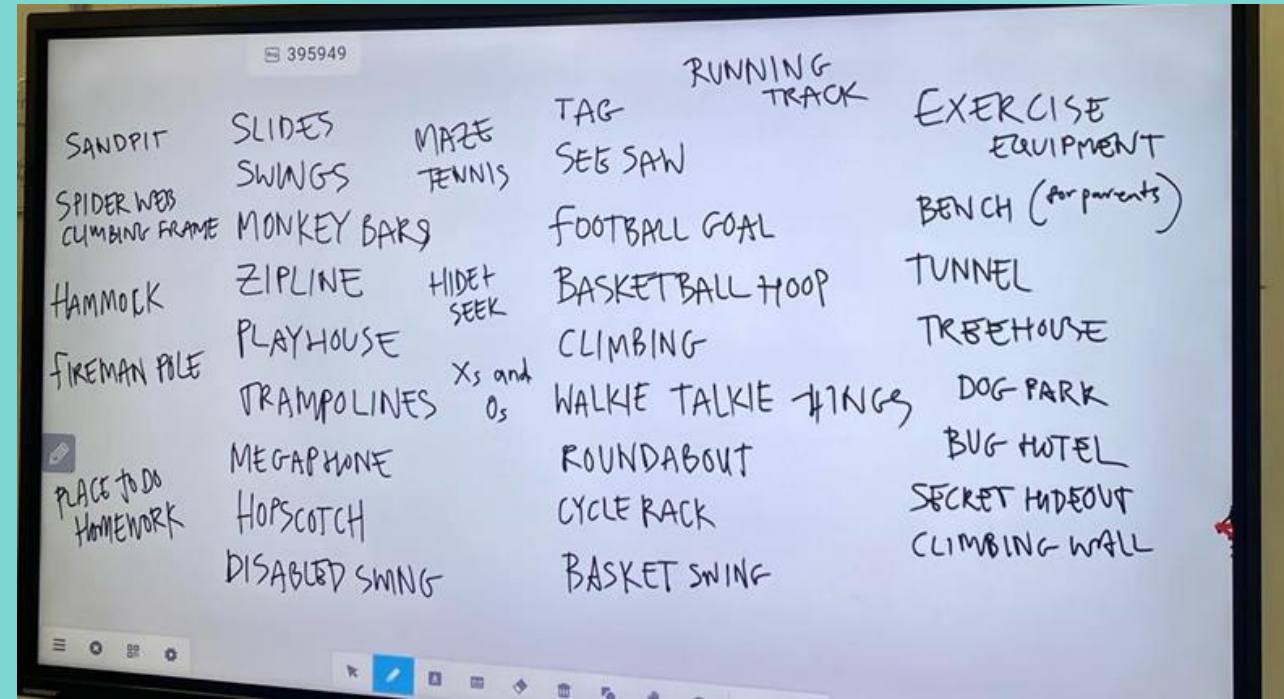
3rd and 5th class

Thursday 11th January 2024

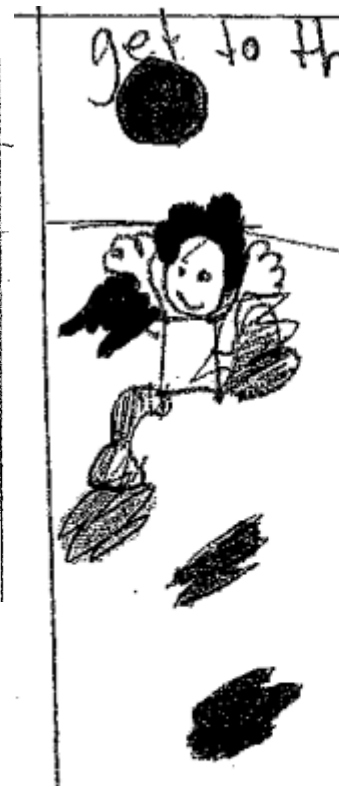
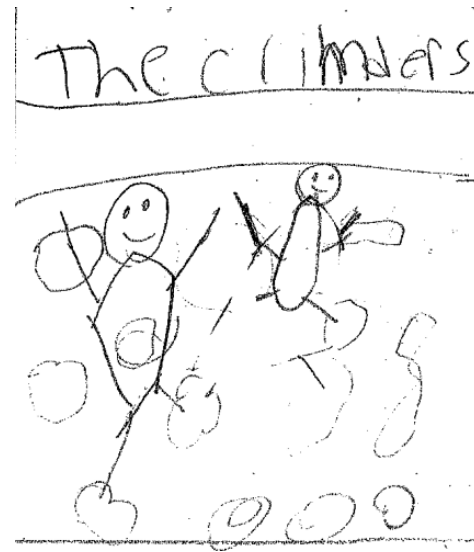
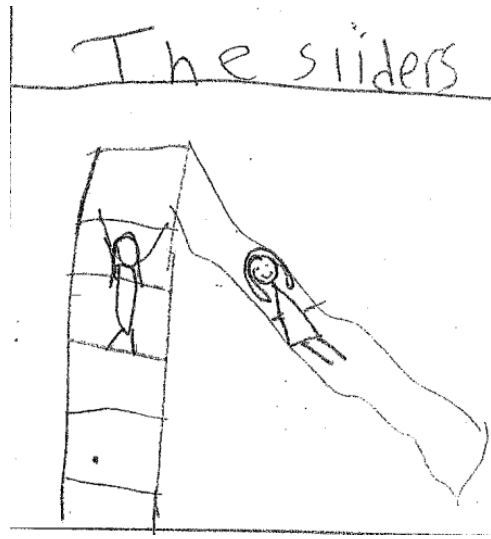
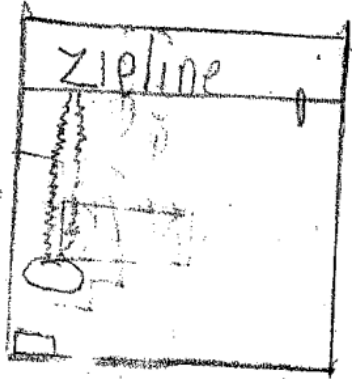


Themes identified

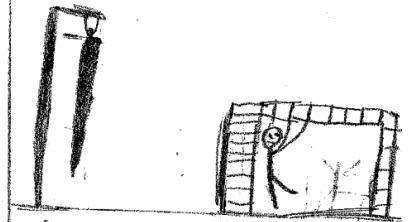
- 1. Adventure play:** natural play, swings, slides, trampolines, ziplines, climbing wall, treehouse.
- 2. Gymnastics/Active play:** exercise machines, monkey bars, climbing and balancing equipment
- 3. Ball games:** football goal, basketball hoop, rebound wall
- 4. Play on wheels:** skateboards, rollerblades, scooters, bikes
- 5. Public realm:** seating, shelter, spaces for reading and gathering, public art
- 6. Facilities:** litter, dog park, bins, public toilets
- 7. Universal play:** wheelchair accessible, sensory consideration



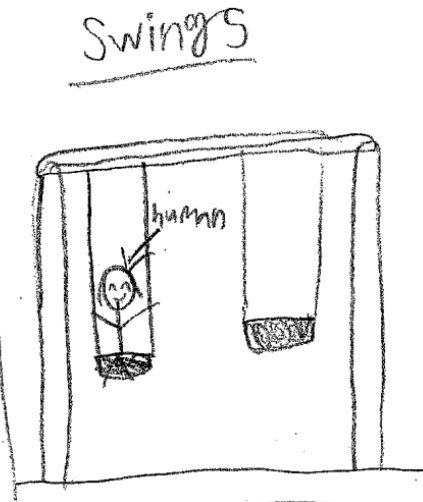
1. Adventure play



Climbing a rope
+ playing on
monkey bars.

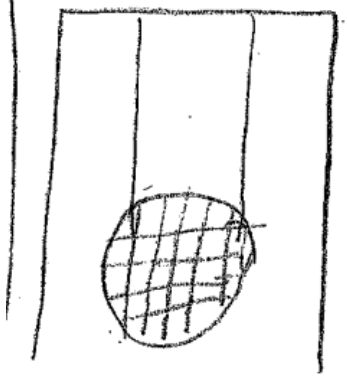


Loving The
swings

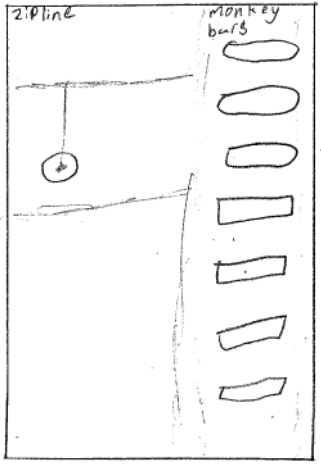
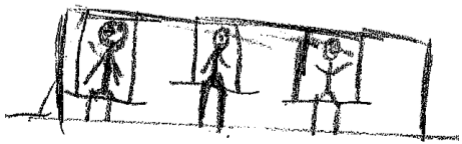




Circle Swing



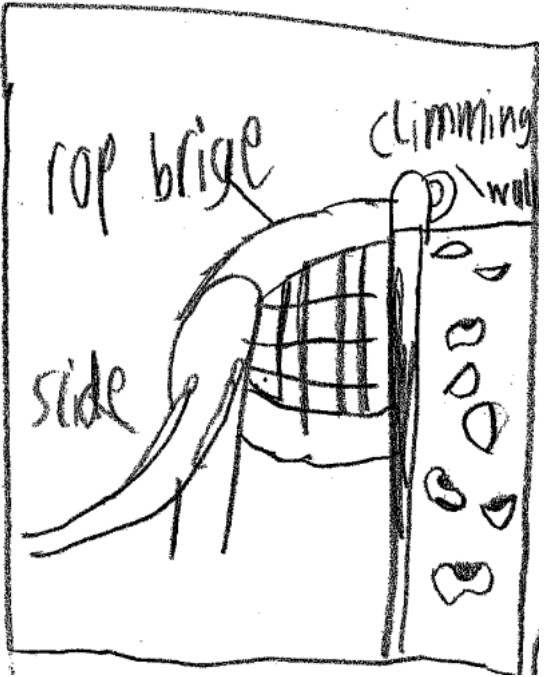
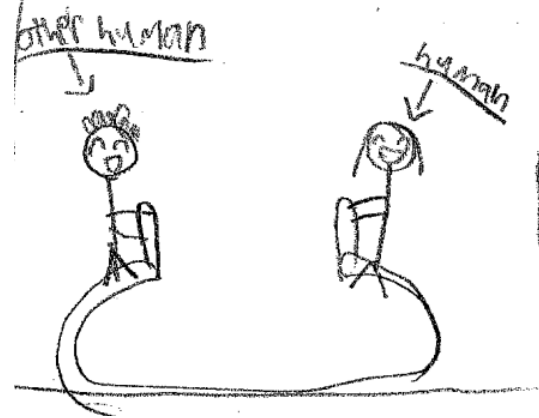
Loving The Swings



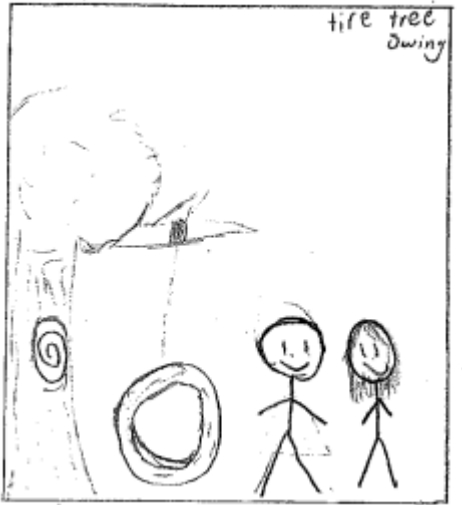
Climbing wall



Seesaw



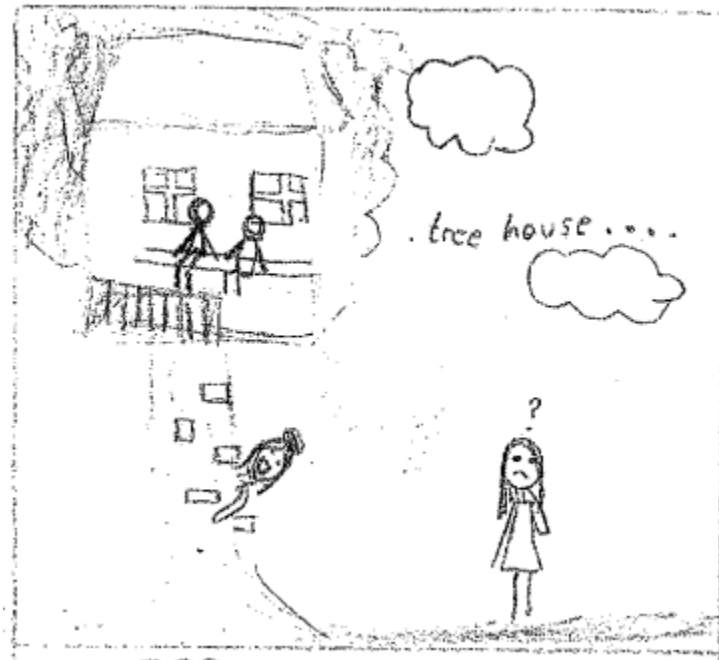
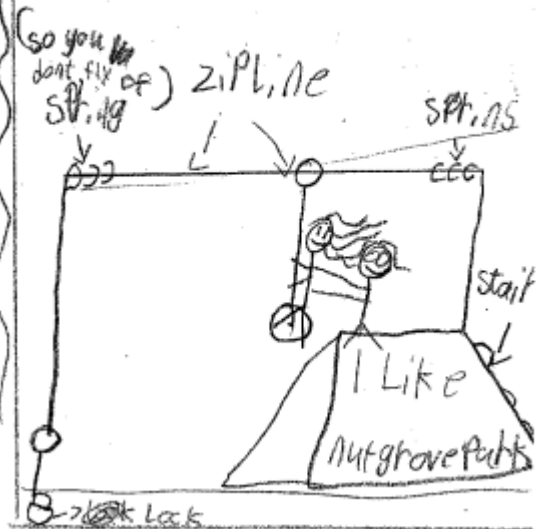
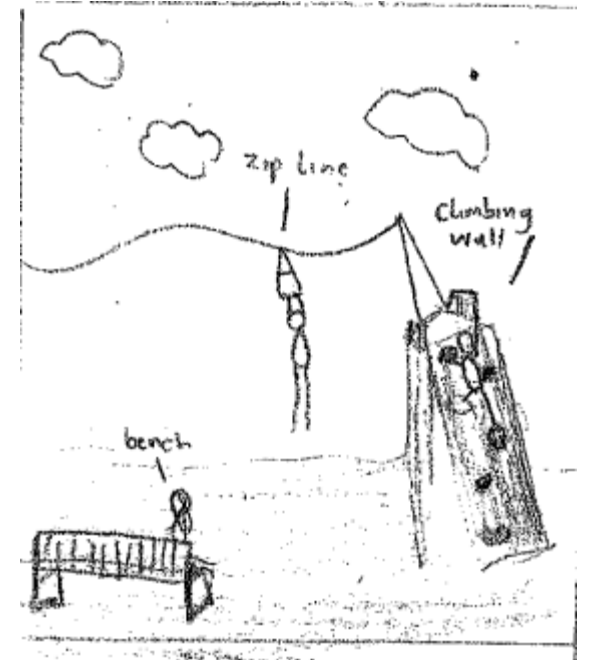
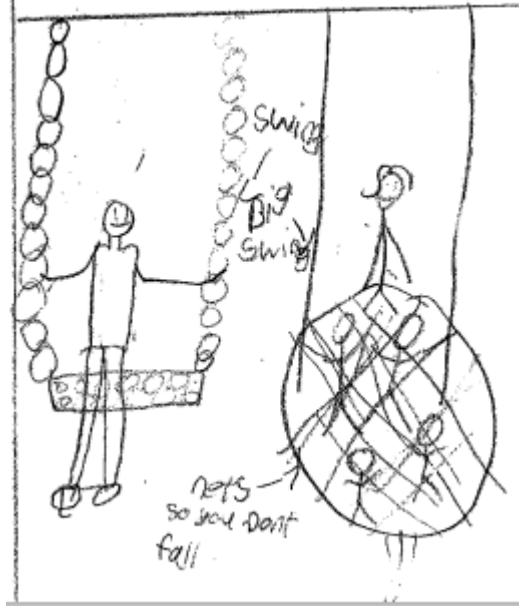
The Climbers



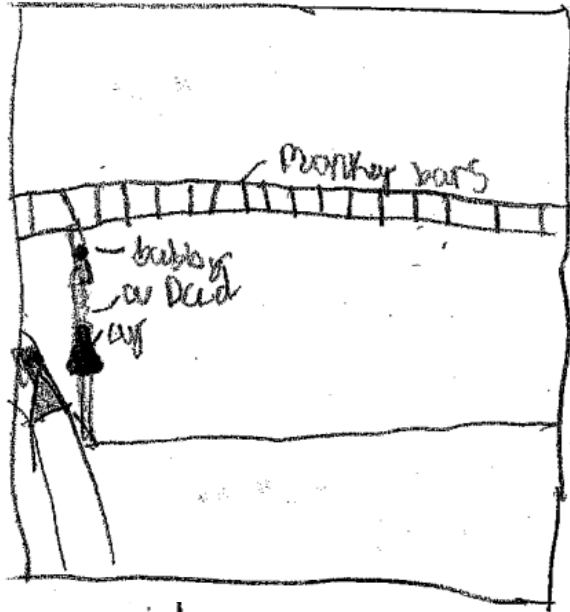
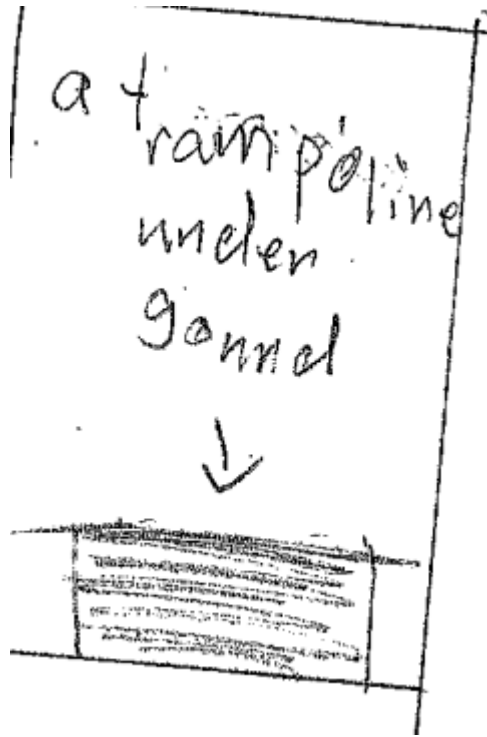
Little Kids Area



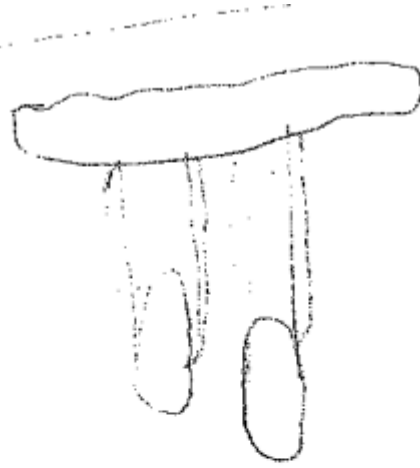
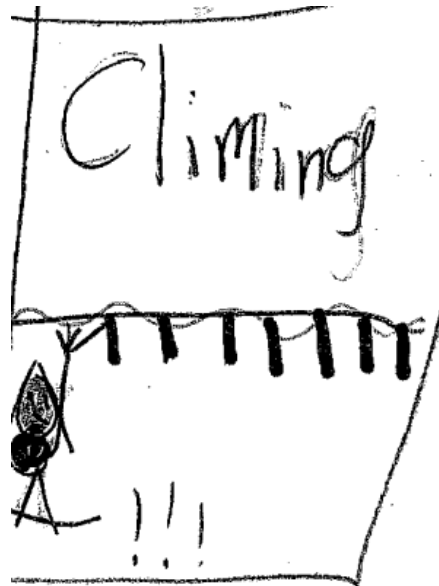
For older kids



2. Gymnastics/Active Play

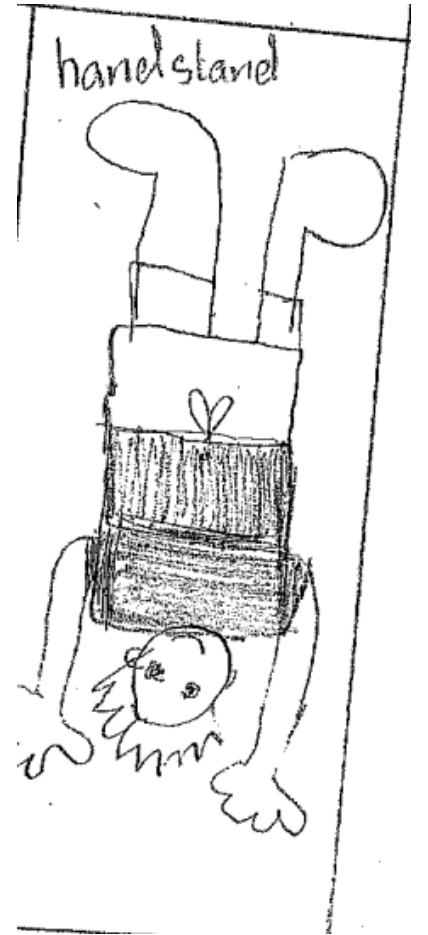
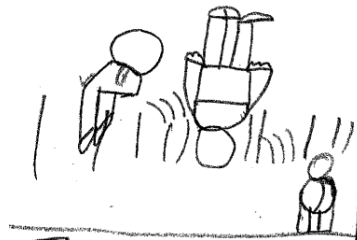


gymnastics

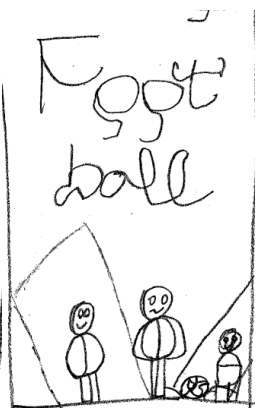
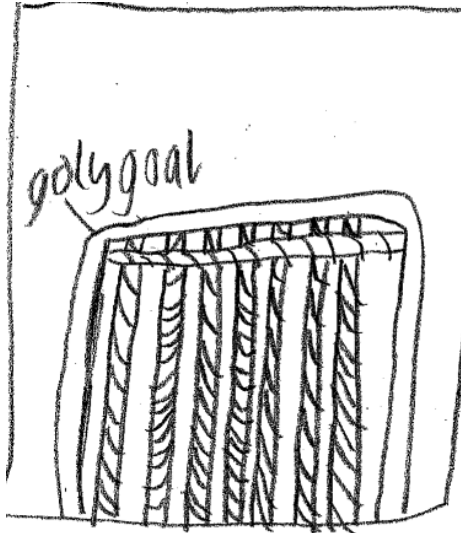
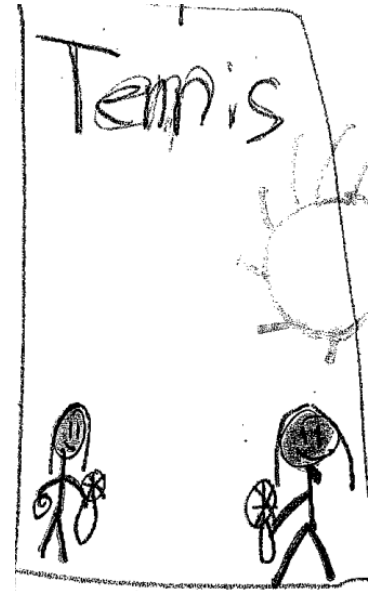
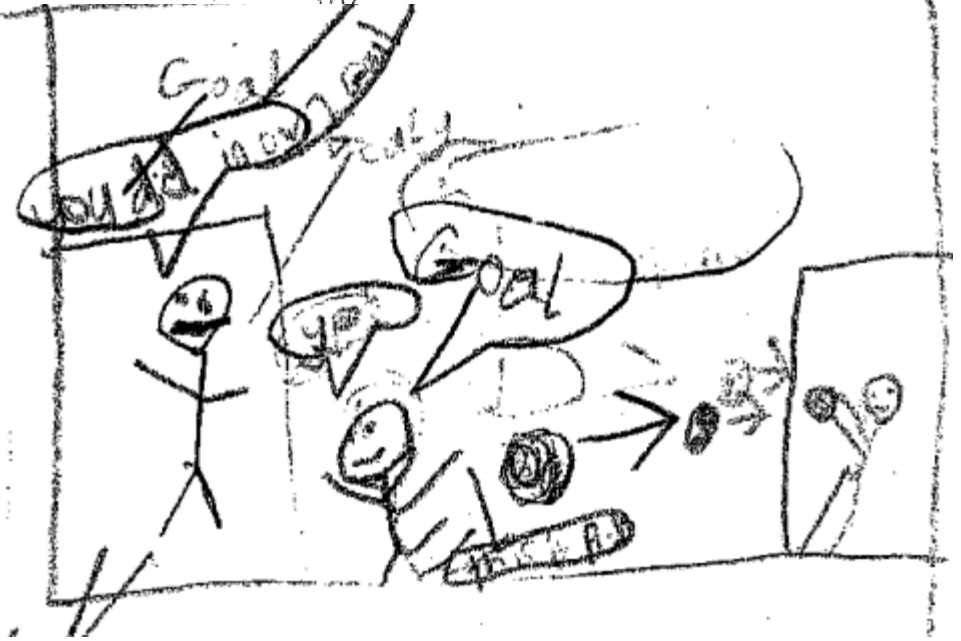
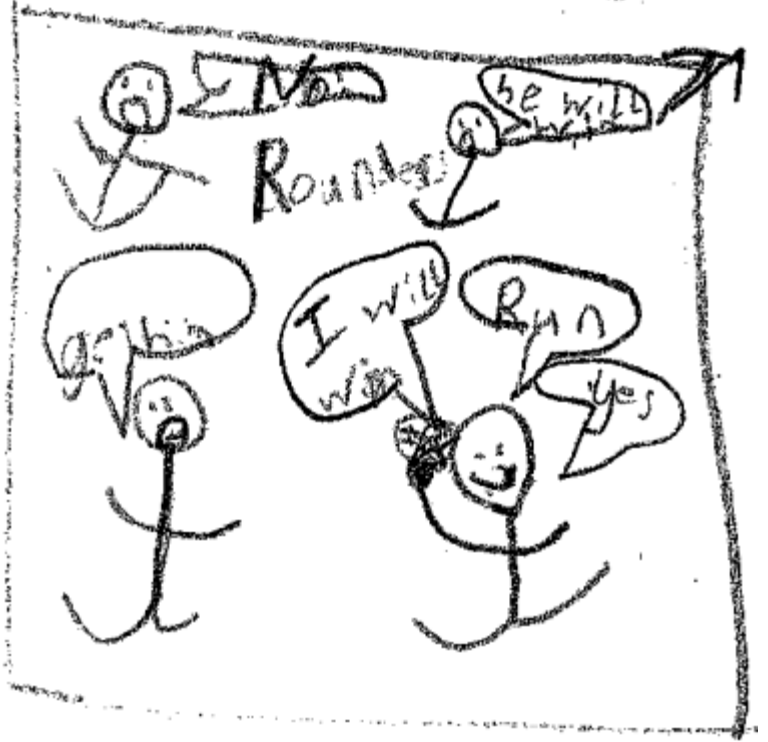
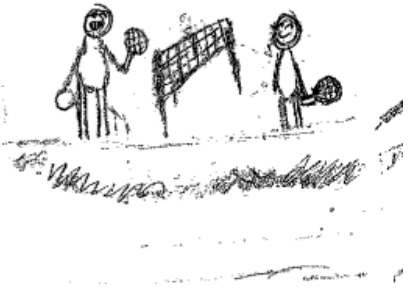
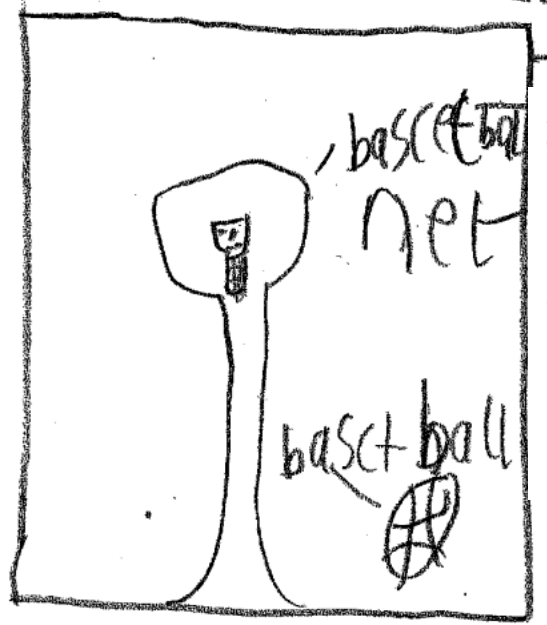


Exercise
machine

FLAPS



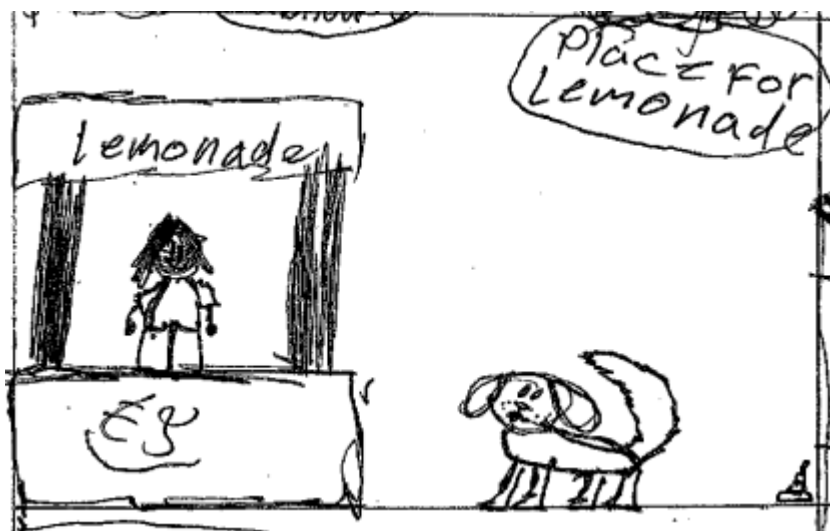
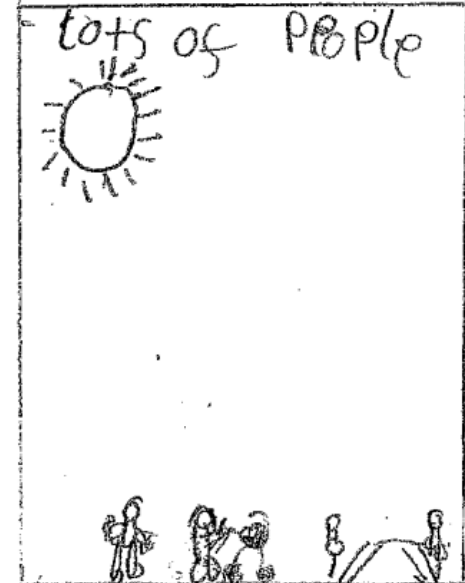
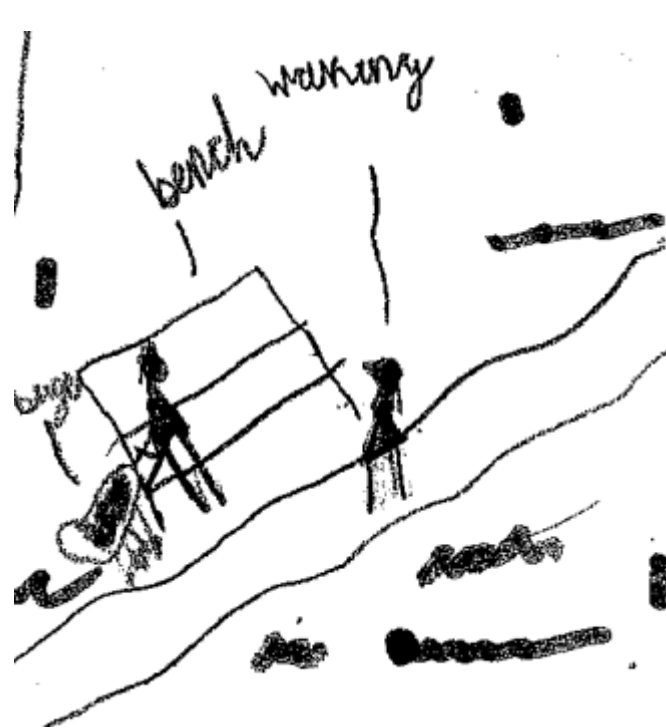
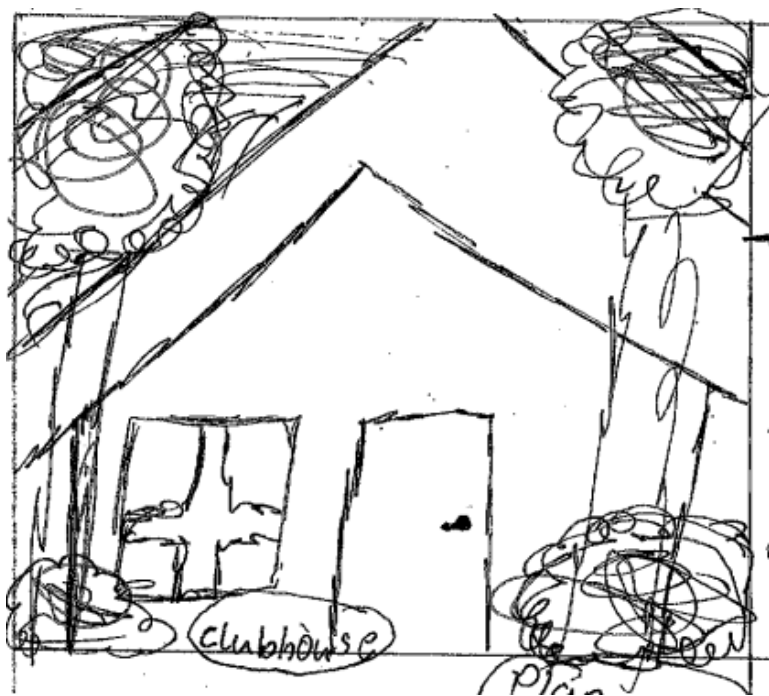
3. Ball games



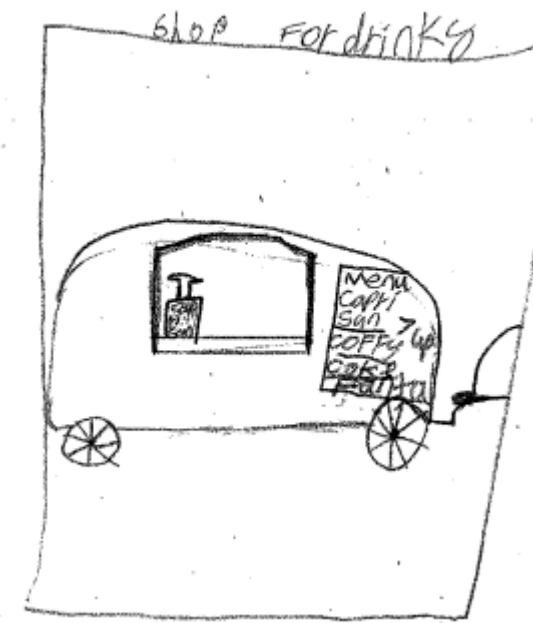
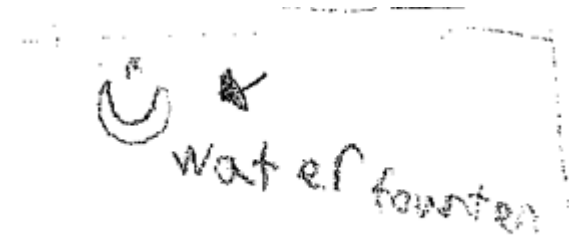
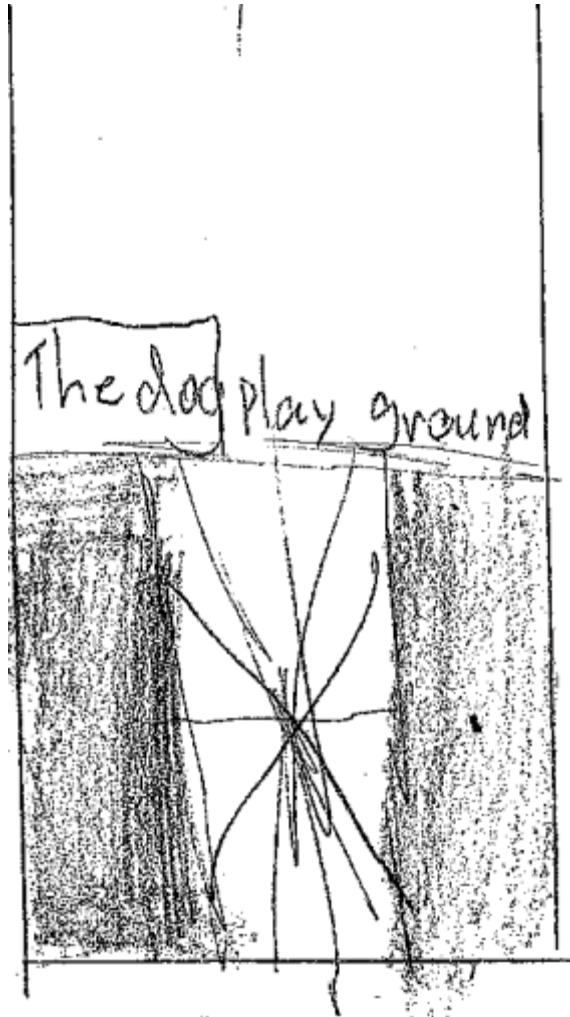
4. Play on wheels



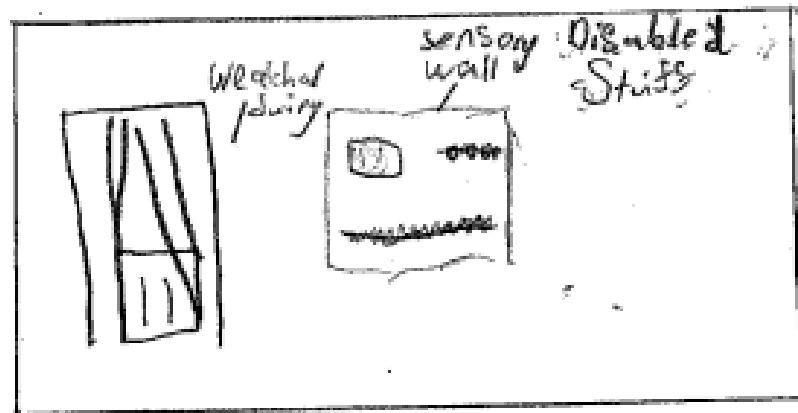
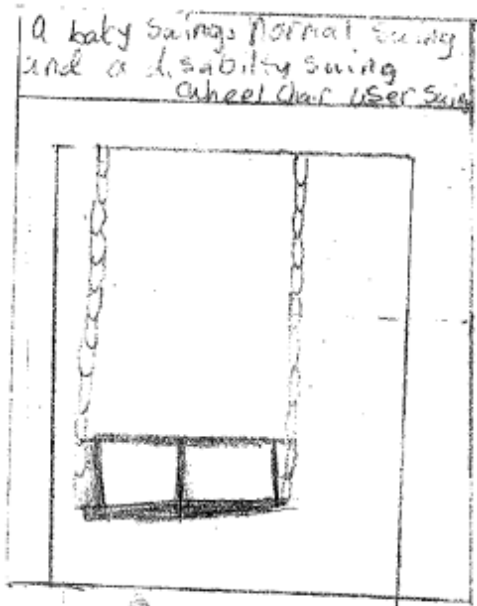
5. Public Realm



6. Facilities



7. Universal play



Wheelchair accessible playground

See saw for the wheelchair

sun clock sundial
place that you can use a compass

* big format
soft play (tunnels)

trail (walk with squares filled in with different items (sand, leaves, rocks, gravel, cork, nuts, bouncy net)

* big format puzzles

* space to train your resistance (thing for special needs children) pulling ropes ect.

water / construction site (diggers, etc)

* swing

* tactile items / games