

## Dún Laoghaire-Rathdown County Council Musicians-in-Residence Scheme

### Appendix 1: A Guide to the dlr Lexlcon Studio for Musicians

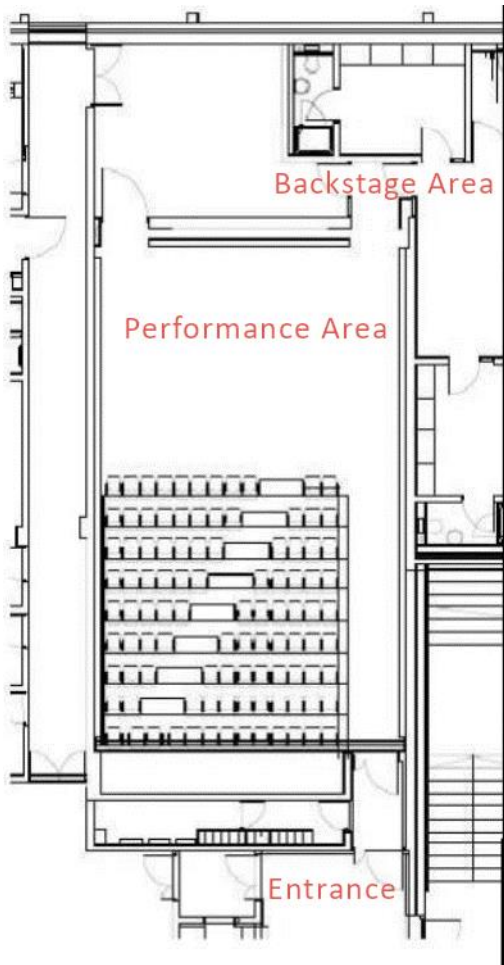


#### **dlr Lexlcon Studio Space**

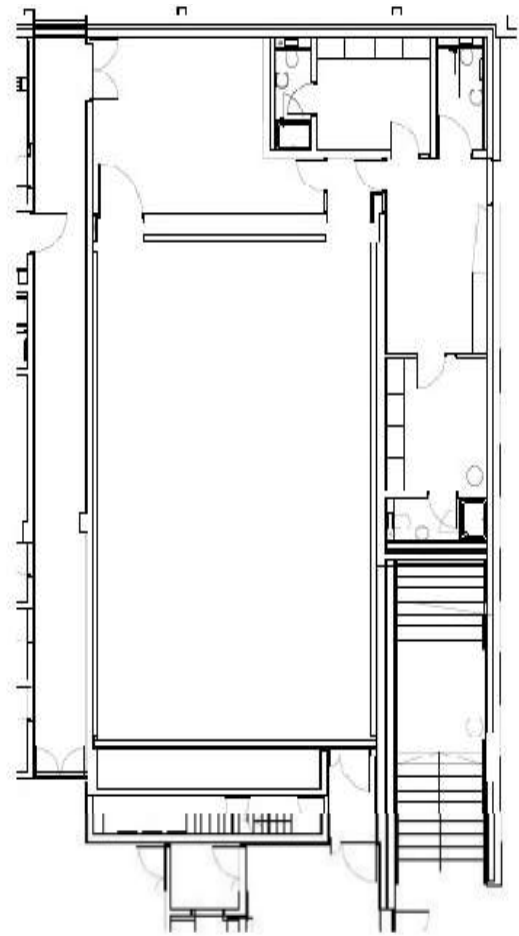
dlr Lexlcon studio has a capacity of 125 with tiered seating. The tiered seating can be retracted to create an open plan area. The performance area is 9160mm wide x 6500mm, in standard configuration, with the seating bank in place. The front row of seating can be removed to give a floor space of 9160mm x 7200mm. With the seating retracted, the space is 9160mm wide x 13500mm deep.

The wall at the back of the stage and the two side walls have wooden panels. They also have heavy black curtains which can be closed or remain open, as required.

## Studio layout:



*Standard layout*

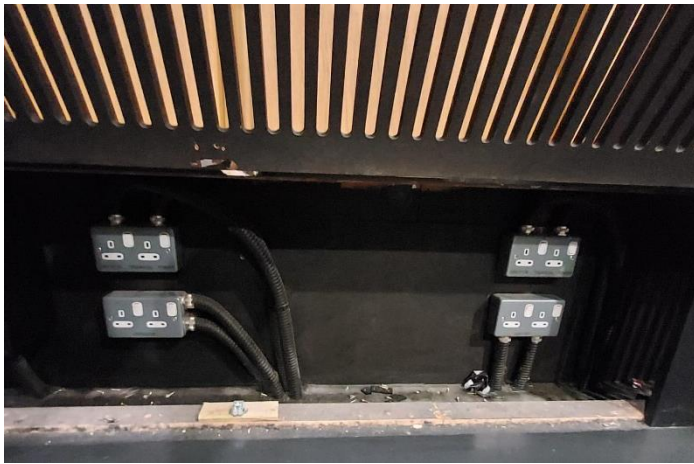


*Layout with tiered seating retracted*

## Access to dlr LexIcon Studio

On arrival at dlr LexIcon, musicians-in-residence must first go to the security desk on level 3 of the library to sign in. This must be done each day before going to the studio. Musicians must also sign out at the security desk each day before leaving the building.

There are house light controls inside the studio entrance to the left. There are a number of fixed settings available selected by the numbered buttons 1 - 5, and lights can be made brighter or dimmer using the up / down arrows.



## Power Points

There are multiple power sockets located under the black bottom panels of the walls at the back of the stage (x16) and stage right (x3). These can be accessed by lifting the panel upwards. If taping any cabling to the floor, please do not use duct tape.

## Backstage

The backstage entrance is located at the back of the performance space (stage left). The access line between the studio entrance and backstage entrance must always be kept clear as this is an emergency exit/access route e.g. no cables should be run here. Located backstage are two dressing rooms with bathrooms, including an accessible bathroom, and a greenroom area.

Equipment can be loaded directly in / out of the studio from the Lexlcon car park via a backstage door (1600mm wide).

## Technical Booth / Equipment

dlr Lexlcon Studio has no in-house PA system, or technical personnel available on site. Musicians-in-residence requiring a PA system for their final performance will need a PA system, monitors, mixing desk\*, and a sound engineer; recommendations can be made for hire companies/sound engineers who have worked in the studio space previously.

\*An Allen & Heath Qu24 digital mixing desk is available if this might be suitable and is located in the technical booth.

Any sound engineer or additional audio tech requirements should be organised, and the costs covered by the musician-in-residence i.e., related costs must be detailed within the project budget.

A technical booth is located behind the tiered seating. This is accessed via the door directly on the left as you enter the studio.

Stage lights are rigged to the ceiling; this lighting is fixed, and the positioning/focus cannot be changed. A lighting desk located in the technical booth and a choice of several fixed light settings are available.



*Performance space with house lights on*



*Performance space with stage lights on*



*Technical booth is located behind seating*



*Lighting desk in the technical booth*



*Allen and Heath Qu-24 mixing desk*

*Piano & stool stored in backstage area*

**The following is the full list of technical equipment available at dlr LexIcon Studio:**

- Allen & Heath QU24 digital console x1 (*in technical booth*)
- Martin Audio XD12 speakers x2 (*hung from ceiling, cannot be moved – not suitable for music performance*)
- Shure SM58 microphones x3
- Tabletop mic stands x5
- Boom mic stands x7
- Behringer DI20 Active Stereo DI Box x1
- Extension cables x2
- Ibach upright piano & piano stool available on request (the piano will need to be tuned prior to a performance. The cost of the piano tuner must be detailed in your budget) (*in backstage area*)

- Projector - Epson Pro L1490U WUXGA 3LCD Laser Projector. Screen viewing area in a 16:9

Ratio is 5'500mm wide x 3'090mm high (*hung from ceiling / projector remote & HDMI connect located in technical booth*)

The location of the equipment will be shown to you on your first day at the studio. Please ensure you return any equipment used before leaving each day.

**Key locations in dlr Lexlcon Studio:**

1. Studio entrance
2. Technical booth
3. House lights switch
- 4 - 5. Power points / XLR feeds

to booth (under panelling)

6. Backstage entrance. (Please keep the line of access from the studio entrance to backstage entrance clear)

7. Greenroom area / Dressing rooms / Bathrooms

8. Backstage door to Lexlcon carpark

