

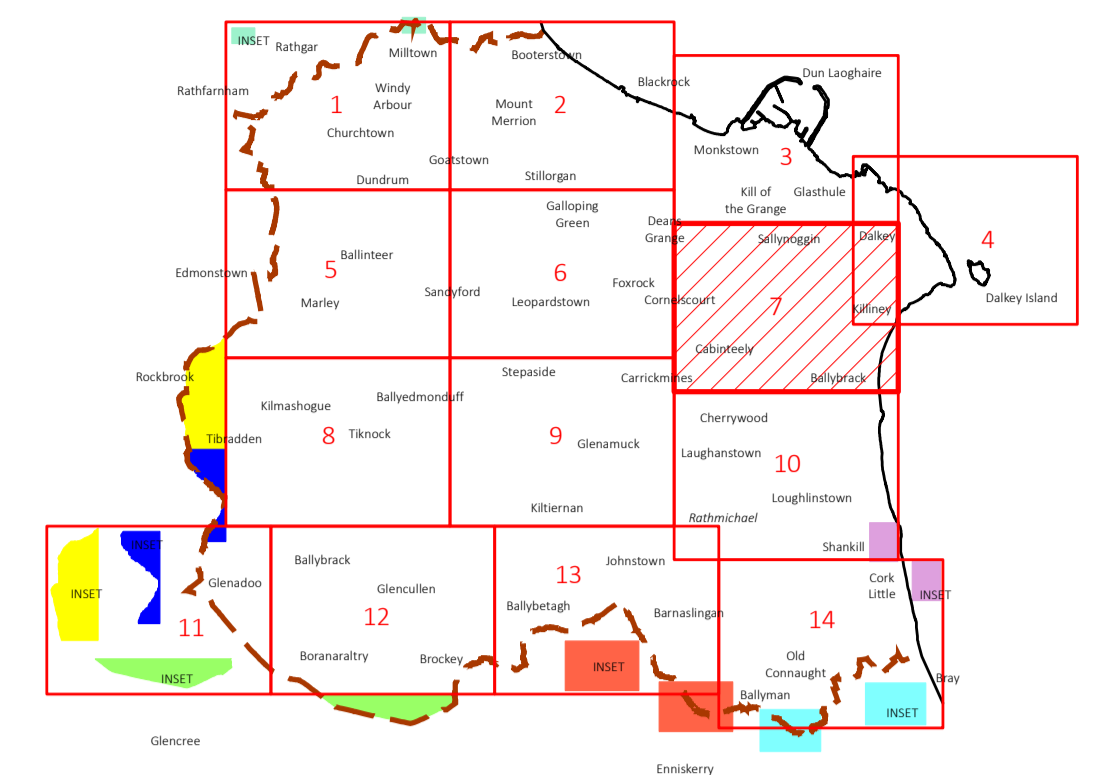
Mapping Notes

- The lines of the Road Proposals shown are diagrammatic only and may be subject to change.
- Wave Overtopping layer is relevant to the following maps only: Map No's. 2, 3, 4, 7, 10 & 14 unless noted otherwise.
- These flood maps contain Land Use Zonings & Flooding information only. Please refer to the Land Use Zoning maps for more detailed land use objectives.

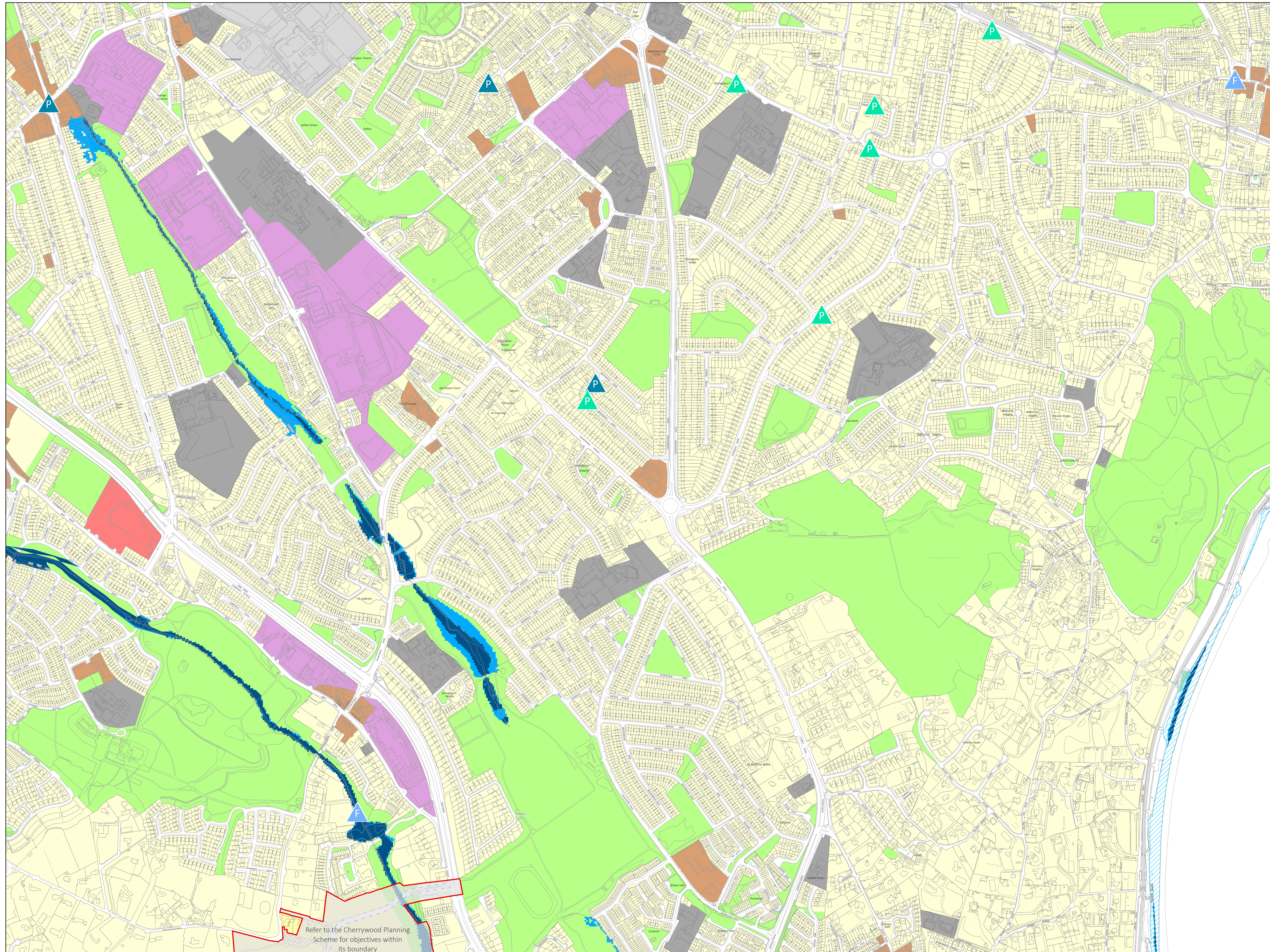
Flood Zone Map

COMHAIRLE CHONTAE DHÚN LAOGHAIRE-RÁTH AN DÚIN DÚN LAOGHAIRE-RATHDOWN COUNTY COUNCIL COUNTY DEVELOPMENT PLAN 2022-2028

Adopted March 2022

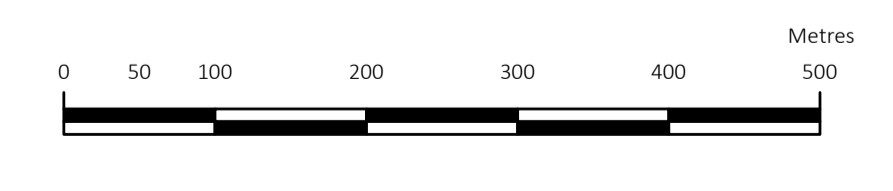


INDEX



Land Use Zonings	
Objective A	To provide residential development and improve residential amenity while protecting the existing residential amenities.
Objective A1	To provide for new residential communities and Sustainable Neighbourhood Infrastructure in accordance with approved local area plans.
Objective A2	To provide for the creation of sustainable residential neighbourhoods and preserve and protect residential amenity.
Objective B	To protect and improve rural amenity and to provide for the development of agriculture.
Objective DC	To protect, provide for and/or improve mixed-use district centre facilities.
Objective E	To provide for economic development and employment.
Objective F	To preserve and provide for open space with ancillary active recreational amenities.
Objective G	To protect and improve high amenity areas.
Objective GB	To protect and enhance the open nature of lands between urban areas.
Objective LIW	To improve and provide for low density warehousing/light industrial warehousing uses
Objective MIC	To consolidate and complete the development of the mixed use inner core to enhance and reinforce sustainable development.
Objective MOC	To provide for a mix of uses which complements the inner core, but with less retail and residential and more emphasis on employment and services.
Objective MTC	To protect, provide for and/or improve major town centre facilities.
Objective NC	To protect, provide for and/or improve mixed-use neighbourhood centre facilities.
Objective OE	To provide for office and enterprise development.
Objective TLI	To facilitate, support and enhance the development of third level education institutions.
Objective W	To provide for waterfront development and harbour related uses.
Objective SNI	To protect, improve and encourage the provision of sustainable neighbourhood infrastructure

Areas of Flood Risk Concern	
Fluvial - Surface Water	
Pluvial - Surface Water	
Pluvial - Foul	
Flood Zone A	
Flood Zone B	
Wave Overtopping	
County Boundary	
Boundary of Adopted Cherrywood Planning Scheme	



© - Ordnance Survey Ireland, 2022

Director of Planning: M Henchy
Senior Planner: L McGauran

Refer to the Cherrywood Planning Scheme for objectives within its boundary