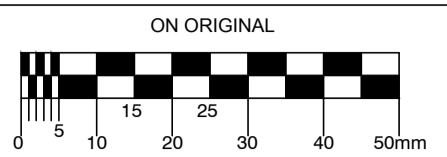
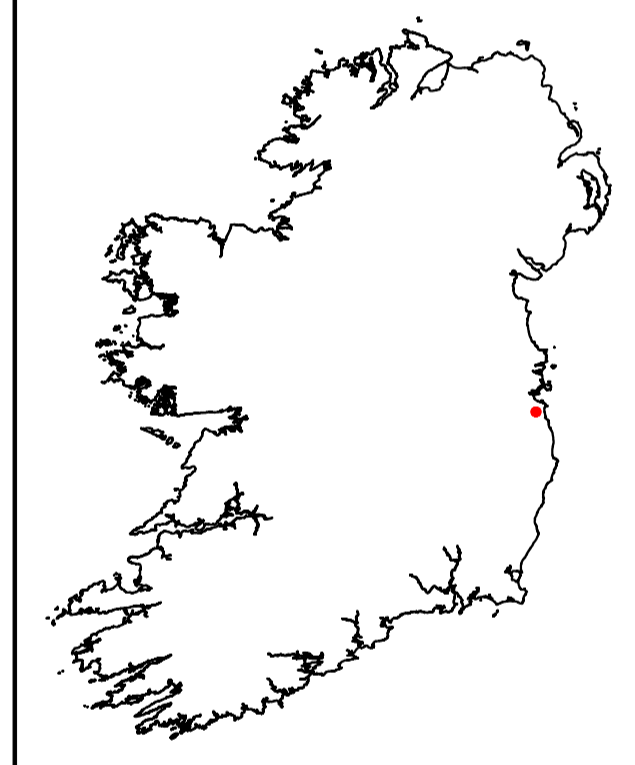


© COPYRIGHT OF THIS DRAWING IS RESERVED BY DBFL CONSULTING ENGINEERS. NO PART SHALL BE REPRODUCED OR TRANSMITTED WITHOUT THEIR WRITTEN PERMISSION.



- NOTES:
- ALL DETAILS SHOWN ARE PRELIMINARY DESIGNS FOR PLANNING ONLY AND ARE SUBJECT TO FURTHER DEVELOPMENT DURING DETAILED DESIGN
 - CPO LINES SHOWN FOR INFORMATION ONLY. REFER TO CPO DEPOSIT MAPS FOR FINAL DETAILS ON CPO EXTENTS

- LEGEND
- PROPOSED WORKS
 - INDICATIVE CONSTRUCTION COMPOUND LOCATION
 - CPO EXTENTS - PERMANENT
 - CPO EXTENTS - TEMPORARY



© ORDNANCE SURVEY IRELAND. ALL RIGHTS RESERVED. LICENCE NUMBER 2013/15CMA/DUN LAOGHAIRE-RATHDOWN COUNTY COUNCIL

P1	13-03-19	ISSUED FOR PLANNING	DJG	JPC
REV.	DATE	DESCRIPTION	BY	CHKD
		DRAWING SUITABILITY	S2	FOR INFORMATION

PLANNING			
DESIGNED	JPC	PREPARED	DJG
DATE	JAN 2019	CHECKED	RLJK



PROJECT
GLENAMUCK DISTRICT ROADS SCHEME

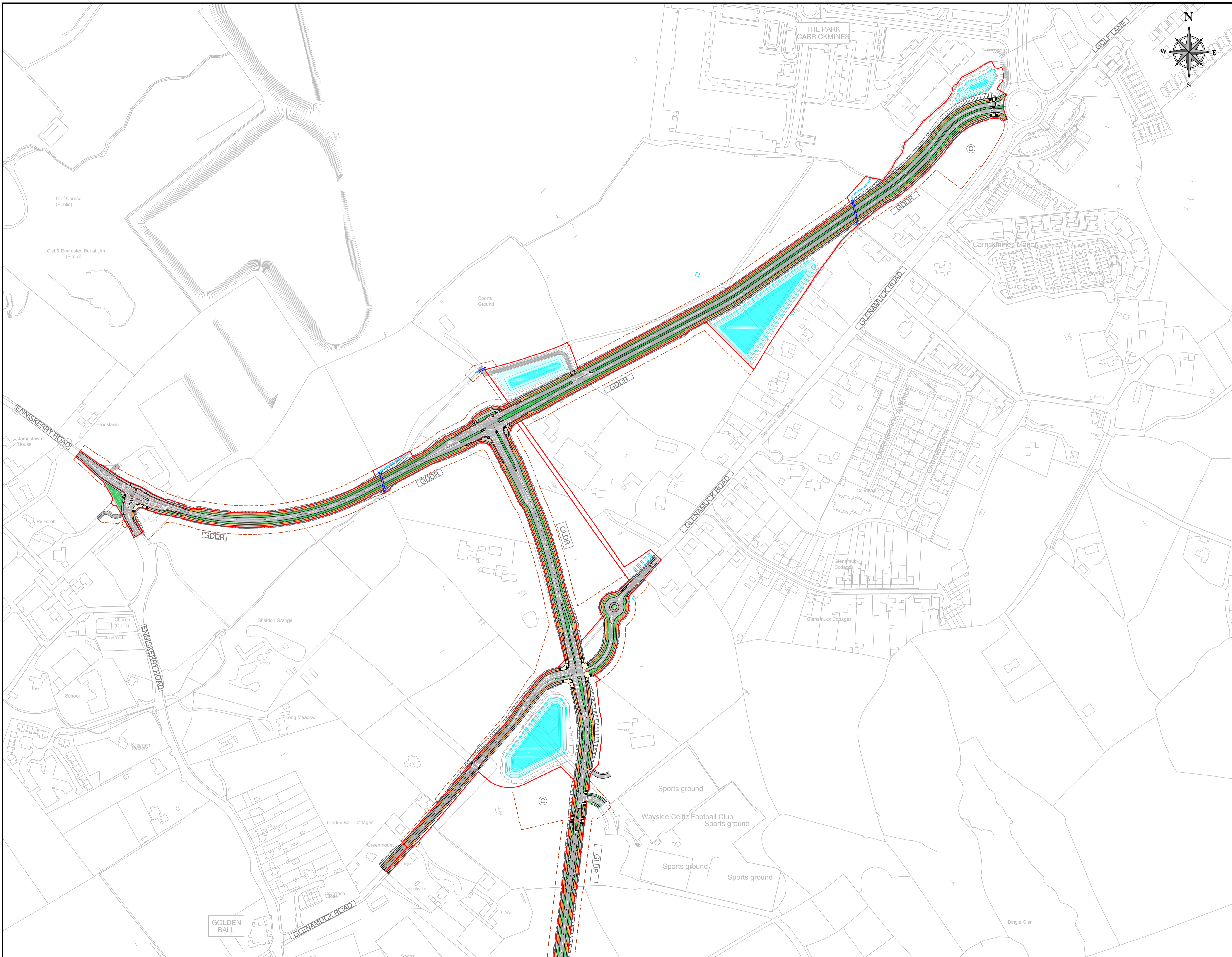
DRG. TITLE
SITE LOCATION MAP - CONTEXT

CLIENT
dlr
Contraire Contae County Council

SCALE	AS SHOWN @A1	FILE REF.	170172-DBFL-01-XX-DR-C-1000
	AS SHOWN X2 @A3		

DBFL DRG. NO.
170172-DBFL-01-XX-DR-C-1000 P1

EIAR FIGURE REF
FIGURE 5-1



© COPYRIGHT OF THIS DRAWING IS RESERVED BY DBFL CONSULTING ENGINEERS. NO PART SHALL BE REPRODUCED OR TRANSMITTED WITHOUT THEIR WRITTEN PERMISSION.

ON ORIGINAL

0 5 10 20 30 40 50m

NOTES:

- ALL DETAILS SHOWN ARE PRELIMINARY DESIGNS FOR PLANNING ONLY AND ARE SUBJECT TO FURTHER DEVELOPMENT DURING DETAILED DESIGN
- CPO LINES SHOWN FOR INFORMATION ONLY. REFER TO CPO DEPOSIT MAPS FOR FINAL DETAILS ON CPO EXTENTS

LEGEND

- PROPOSED ROAD
- PROPOSED FOOTPATH
- GRASS VERGE/LANDSCAPING
- SHARED PEDESTRIAN/CYCLE FACILITY
- OFF-ROAD CYCLE TRACK
- ON-ROAD CYCLE LANE
- BUFFER STRIP FROM FUTURE PARKING
- PROPOSED ATTENUATION POND [DARK BLUE = PERMANENT WATER LEVEL, LIGHT BLUE = Q100 WATER LEVEL]
- INDICATIVE CONSTRUCTION COMPOUND LOCATION
- CPO EXTENTS - PERMANENT
- CPO EXTENTS - TEMPORARY

© ORDNANCE SURVEY IRELAND. ALL RIGHTS RESERVED. LICENCE NUMBER 2013/15CCM/DUN LAOGHAIRE-RATHDOWN COUNTY COUNCIL

P1	13-03-19	ISSUED FOR PLANNING	DJC	JPC
REV.	DATE	DESCRIPTION	BY	CHKD
DRAWING SUITABILITY		S2 - FOR INFORMATION		
PLANNING				
DESIGNED	JPC	PREPARED	DJC	
DATE	JAN 2019	CHECKED	RLJK	

DBFL Consulting Engineers
 DUBLIN OFFICE: Ormond House, Upper Ormond Quay, Dublin 7, Ireland. PHONE: +353 1 400 4000 FAX: +353 1 500 4050
 WATERFORD OFFICE: Unit 2, The Chandlery, 1-2 O'Connell Street, Waterford, Ireland. PHONE: +353 51 309 500 FAX: +353 51 844 913

DBFL Consulting Engineers email: info@dbfl.ie www: www.dbfl.ie

PROJECT
GLENAMUCK DISTRICT ROADS SCHEME

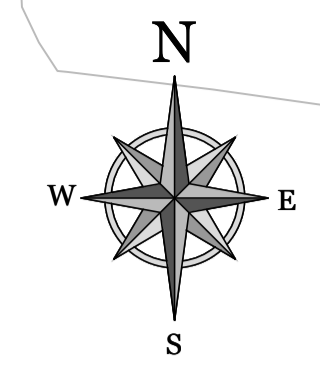
DRG. TITLE
SITE LOCATION MAP - SHEET 1

CLIENT
Comhairle Contae County Council

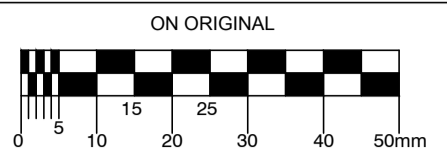
SCALE
 1:2500 @A1
 1:5000 @A3
 FILE REF.
 170172-DBFL-01-XX-DR-C-1001

DBFL DRG. NO.
170172-DBFL-01-XX-DR-C-1001 P1

EIAR FIGURE REF
FIGURE 5-2



© COPYRIGHT OF THIS DRAWING IS RESERVED BY DBFL CONSULTING ENGINEERS. NO PART SHALL BE REPRODUCED OR TRANSMITTED WITHOUT THEIR WRITTEN PERMISSION.



- NOTES:
1. ALL DETAILS SHOWN ARE PRELIMINARY DESIGNS FOR PLANNING ONLY AND ARE SUBJECT TO FURTHER DEVELOPMENT DURING DETAILED DESIGN
 2. CPO LINES SHOWN FOR INFORMATION ONLY. REFER TO CPO DEPOSIT MAPS FOR FINAL DETAILS ON CPO EXTENTS

LEGEND

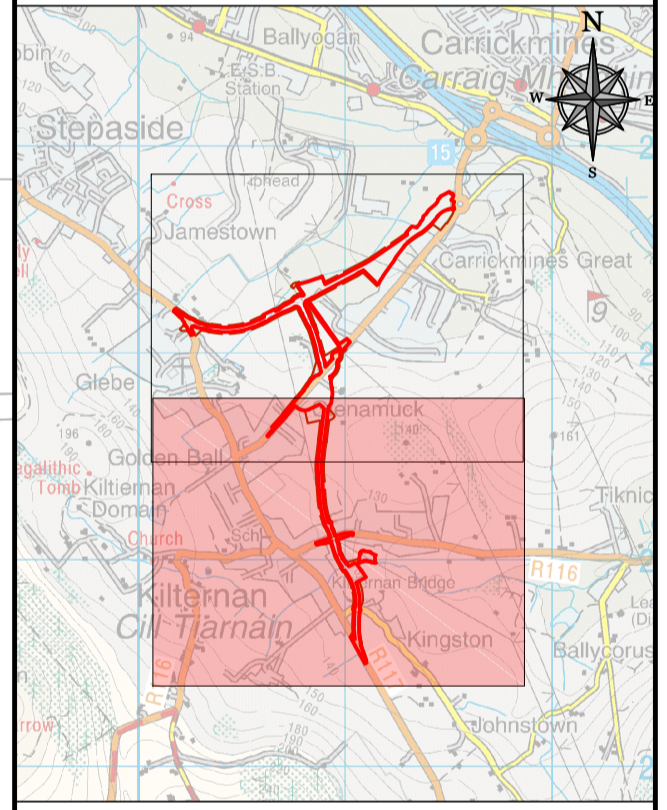
- PROPOSED ROAD
- PROPOSED FOOTPATH
- GRASS VERGE/LANDSCAPING
- SHARED PEDESTRIAN/CYCLE FACILITY
- OFF-ROAD CYCLE TRACK
- ON-ROAD CYCLE LANE
- BUFFER STRIP FROM FUTURE PARKING

PROPOSED ATTENUATION POND
 [DARK BLUE = PERMANENT WATER LEVEL
 LIGHT BLUE = Q100 WATER LEVEL]

INDICATIVE CONSTRUCTION COMPOUND LOCATION

CPO EXTENTS - PERMANENT

CPO EXTENTS - TEMPORARY



© ORDNANCE SURVEY IRELAND. ALL RIGHTS RESERVED. LICENCE NUMBER 2013/15CCMA/
 DUN LAOGHAIRE-RATHDOWN COUNTY COUNCIL

P1	13-03-19	ISSUED FOR PLANNING	DJG	JPC
REV.	DATE	DESCRIPTION	BY	CHKD.
DRAWING SUITABILITY		S2 - FOR INFORMATION		
PLANNING				
DESIGNED	JPC	PREPARED	DJG	
DATE	JAN 2019	CHECKED	BLJK	

DBFL Consulting Engineers
 DUBLIN OFFICE: Ormond House, Upper Ormond Quay, Dublin 7, Ireland. PHONE: +353 1 403 4000 FAX: +353 1 403 4050
 WATERFORD OFFICE: Unit 2, The Chandlery, 1-2 O'Connell Street, Waterford, Ireland. PHONE: +353 51 309 500 FAX: +353 51 844 913

PROJECT
GLENAMUCK DISTRICT ROADS SCHEME

DRG. TITLE
SITE LOCATION MAP - SHEET 2

CLIENT
dlr
 Comhairle Contae County Council

SCALE 1:2500 @A1 FILE REF. 170172-DBFL-01-XX-DR-C-1001
 1:5000 @A3

DBFL DRG. NO.
170172-DBFL-01-XX-DR-C-1002 P1

EIAR FIGURE REF
FIGURE 5-3