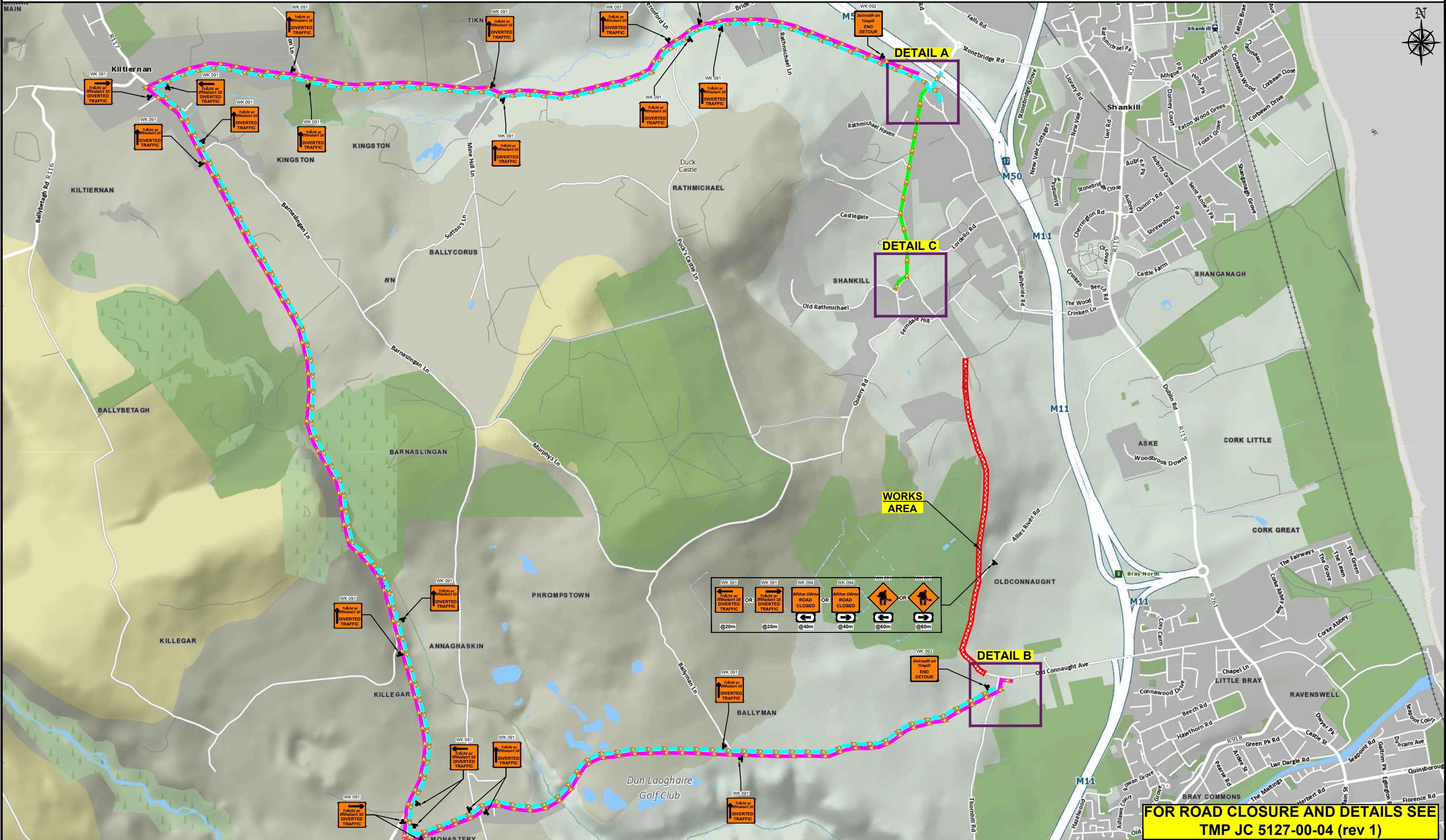


R116, R117, MONASTERY ROAD, BALLYMAN, CO. DUBLIN - DIVERSION ROUTES



**FOR ROAD CLOSURE AND DETAILS SEE
TMP JC 5127-00-04 (rev 1)**

DESIGN PARAMETERS				SAFETY ZONE			TEMPORARY SIGNS				CONE SPACING AND SIZE				RATE OF TAPER		LAMP SPACING		TRAFFIC MANAGEMENT SYSTEM			
Road Lvl(Sub)	Roadworks Type	Speed Limit (km/h)	Min. Lane Width (m)	Longitudinal (m)	Lateral (m)	Set Back (m)	Distance (m)	Number	Min. Size (mm)	Sign Visibility (m)	Longitudinal (m)	At Tapers (m)	Min. Height (mm)	Taper at H/S (m)	Taper at Lane (m)	At Tapers	Longitudinal (m)	Method	Coned Area Length (m)	Max. Traffic Flow (veh/h)		
1 (iii)	A	50	3.00	5	0.5	-	20	2	600	50	3	3	750	1 in 5	1 in 5	6	6	Diversion	n/a	n/a		

LEGEND	
	- TRAFFIC CONES
	- SIGN LOCATION
	- WORKS AREA
	- DIVERGENCE ROUTE
	- DIVERSION ROUTE
	- DIVERSION ROUTE

GARY KEVILLE TRAFFIC MANAGEMENT LTD.		CLIENT:	
Rosemount Business Park, Dublin 11, Co. Dublin, Ireland		WARD & BURKE	
Tel: (+3531) 667 4322; Email: info@gktm.ie ; Visit us at: www.gktm.ie			
DESIGNED: SS	SCALE: NTS	PROJECT TITLE: OLDCONNAUGHT / WOODBROOK WATER SUPPLY SCHEME	
DRAWN: SS	DATE: 22-03-2022	DRAWING NAME: R116, R117, MONASTERY ROAD, BALLYMAN, CO. DUBLIN - DIVERSION ROUTES	
VERIFIED: BJ	DATE: 22-03-2022	STAGE: CONSTRUCTION	DWG. No.: JC 5127-00-04a
APPROVED: SC	DATE: 22-03-2022		REV: 1
Rev. No.: Revision Details		Rev. Date:	
1.	Amended diversion.	13-10-2022	SS

NOTES:

- ALL INFORMATION CONTAINED IN THIS DRAWING SHOULD BE CHECKED AND VERIFIED BY CONTRACTOR PRIOR TO ANY STAGE OF CONSTRUCTION.
- ALL WORKS ARE TO BE CARRIED OUT IN ACCORDANCE WITH LOCAL AUTHORITY REQUIREMENTS AND ARE TO BE INCLUDED IN THE SITE-SPECIFIC SAFETY & HEALTH PLAN.
- CONTRACTOR TO CARRY OUT A SITE RISK ASSESSMENT PRIOR TO THE INSTALLATION OF ANY TRAFFIC MANAGEMENT PLAN TO ENSURE THAT CONDITIONS REFLECT THOSE CONSIDERED FOR DESIGN POST SUBMISSION.
- CONTRACTOR SHALL BE RESPONSIBLE FOR THE PROVISION OF RAMP ACCESS AT ANY CHANGE IN ROAD SURFACE LEVEL WHERE TRAFFIC RUNS ON A TEMPORARY SURFACE.
- THIS TRAFFIC MANAGEMENT PLAN MAY ONLY BE IMPLEMENTED BY A TTOS WHO MUST CARRY OUT A RISK ASSESSMENT BEFORE IMPLEMENTATION. TTOS MUST BE IN POSSESSION OF CSCS CARD "SIGNING, LIGHTNING AND GUARDING AT ROAD WORKS" CONSTRUCTION REGULATIONS 2006.
- EXACT SIGN POSITIONS TO BE AGREED ON SITE.
- ACCESS TO BE MAINTAINED TO ALL DWELLINGS / BUSINESSES AT ALL TIMES.
- SITE INSPECTIONS AND MAINTENANCE OF THE TRAFFIC MANAGEMENT LAYOUT IS TO BE CONDUCTED ON A DAILY BASIS TO ENSURE THE SAFETY AND INTEGRITY OF THE DESIGN.
- ALL TEMPORARY FOOTWAYS MUST HAVE A GOOD QUALITY, EVEN SURFACE AND BE MAINTAINED FREE FROM OBSTRUCTION.
- PEDESTRIANS TO BE PROTECTED FROM WORKS AREA BY PEDESTRIAN BARRIER SYSTEM.
- TM OPERATIVES TO MAINTAIN CLOSURE. MARSHAL PEDESTRIANS AND INFORM DRIVERS ABOUT DIVERSION ROUTES DURING WORK HOURS.