



Dún Laoghaire-Rathdown County Council

Musicians-in-Residence Scheme 2020

Guidelines for Applicants

Closing Date: Thursday 20th February at 2.00pm

The Dún Laoghaire-Rathdown County Council Musicians-in-Residence Scheme is jointly funded by Dún Laoghaire-Rathdown County Council and the Arts Council, and is managed by Music Network. Three residencies are offered in 2020: two for established musicians/groups and one for an emerging musician/group.

Aims and objectives:

The aim of the Musicians-in-Residence Scheme is to provide opportunities to develop and showcase new work which may be compositional and/or performance focused, i.e. to create new material and/or to develop a new artistic collaboration. Throughout each residency, the cultural environment of Dún Laoghaire-Rathdown will be enriched through engagement by the musicians with a broad demographic via presentation of a series of performances in the dlr Lexicon Studio and additional off-site locations.

The primary objective is to provide opportunities for musicians to create and develop new work.

Additional objectives are to:

- create opportunities for musicians to showcase new work
- support career development through advice and/or mentorship
- provide the public with an opportunity to attend high quality musical performances.

Who can apply?

- established and emerging individual musicians and groups
- musicians working in all genres.

N.B. applicants (including all members of any group) must demonstrate a strong connection to Dún Laoghaire-Rathdown, i.e. live, work, be originally from or have studied in, Dún Laoghaire-Rathdown.

What does each residency involve?

The residencies will be part-time in format, taking place over a non-consecutive period of dates within an approximate 2 month period. Please see page 3 for details of specific dates.

Each Residency for established musicians/groups involves:

- 10 - 13 development days in dlr Lexlcon Studio – this will allow the musician(s) to access the Studio space, or another room in dlr Lexlcon, to spend time developing new work
- engagement with the local community through a series of exciting artistic offerings:
 - 1 public concert in dlr Lexlcon Studio – performance to take place at the end of the residency (see page 3 for dates)
 - 1 informal engagement e.g. an open rehearsal to take place approximately mid-way through the residency, either in dlr Lexlcon Studio or an off-site location - this will be arranged in conjunction with the Arts Office
- The concert will be filmed by Music Network. On the concert day, the artist agrees to give a brief video interview prior to the performance, which will be edited to accompany short concert excerpts to document and showcase the creative outcome of the residency
- advice and support offered by Music Network, as required
- completion of a short report by the musician-in-residence at the end of each project.

Maximum available budget: €5,000 (VAT inclusive).

The Residency for an emerging musician/group includes:

- 6 - 8 development days in dlr Lexlcon Studio – this will allow the musician(s) to access the Studio space, or another room in dlr Lexlcon, to spend time developing new work
- engagement with the local community through a series of exciting artistic offerings:
 - 1 public concert in dlr Lexlcon studio – performance to take place on one of the dates outlined on page 3
 - 1 informal engagement e.g. an open rehearsal to take place approximately mid-way through the residency, either in dlr Lexlcon Studio or an off-site location - this will be arranged in conjunction with the Arts Office
- The concert will be filmed by Music Network. On the concert day, the artist agrees to give a brief video interview prior to the performance, which will be edited to accompany short concert excerpts to document and showcase the creative outcome of the residency
- musician development opportunities through individual mentoring sessions with Music Network, as required
- completion of a short report by the musician-in-residence at the end of each project.

Maximum available budget: €3,000 (VAT inclusive).

Note: all applicants should make provision for Public Liability Insurance from their Residency budget, and if necessary, Employers Liability Insurance, as this is a requirement of funding.

Applicants should note that the Residency budget includes **all** costs associated with performances, such as technical equipment, sound engineer, collaborating musicians etc. Any person working with the selected musician(s) who will be accessing equipment in the dlr LexIcon Studio must be suitably qualified.

The Studio has no in-house tech staff. Please see **Appendix 3 - dlr LexIcon The Studio-Technical Information Guide** for additional information and tech spec.

Note: if tech staff or any additional PA equipment are required for performances, arrangements must be put in place by the applicant and related costs accounted for within the applicant's budget. Please note that there is limited access to the lighting rig.

Residency Calendar:

Residency 1: April – May 2020

- Concert date: Thursday 14th May at 7.00pm or Sunday 24th May at 3.00pm

Residency 2: June – July 2020

- Concert date: Thursday 23rd July at 7.00pm or Sunday 26th July at 3.00pm

Residency 3: October – November 2020

- Concert date: Thursday 19th November at 7.00pm or Sunday 22nd November at 3.00 pm

Applicants should list, in order of preference, the Residency period they would prefer and also indicate if any of the above concert dates would present a scheduling problem. Dates for development work and off-site activities are flexible. However, as the dlr LexIcon Studio is an extremely busy multi-disciplinary space, some flexibility will be required in finalising dates. There are meeting rooms in dlr LexIcon which may be available to the selected musicians for writing/research days.

Programme of work:

The details of each Residency Programme will be agreed in consultation with Music Network, DLR Arts Office and the selected musicians. Music Network will supervise the programme and advise musicians throughout. DLR Arts Office will liaise with the musicians regarding logistical arrangements i.e. finalising dates for development work & performance dates/locations.

Selection criteria:

- artistic quality and track record in music performance/composition (N.B. for emerging musicians, demonstrated potential will also be assessed) (50%)
- quality, coherence and feasibility of proposal (artistic plan, collaborating musicians, ideas on content and presentation of performances and demonstration/Q&A session, audience engagement etc.) (35%)
- demonstrated ability in project & budget planning and management (15%)

N.B. it is important to consider all of the above criteria carefully when preparing your application as this is a competitive process and all three will be taken into account by the panel during the selection process.

Application procedure:

Applicants must submit their application to Music Network by email to operations@musicnetwork.ie. Hard copy applications will not be accepted. Late applications will not be accepted. Closing date for applications: Thursday 20th February 2020 at 2.00pm.

All of the following must be supplied for your application to be eligible:

1. an outline of your proposed programme of work including artistic ideas and approaches, the benefits of the residency to you at this stage of your development as a musician, a list of any collaborating musicians and suggested outlines for the performance and an informal engagement (maximum 3 x A4 pages)
2. your CV (maximum 3 x A4 pages) including your connection to Dún Laoghaire-Rathdown
3. biographies of any proposed collaborator(s) (maximum 1 x A4 page per collaborator)
4. links to 3 sample audio/video tracks (via dropbox, soundcloud or youtube): while professional standard recordings are not essential, these should reflect the artistic quality of your work, and ideally the artistic concept proposed
5. 1 minute video clip (recorded on a mobile phone) which briefly outlines your goals and what you hope to achieve creatively during your residency
6. a detailed budget for your programme including proposed fees (for you and any proposed collaborator(s)/mentors) and other programme expenditure)
7. confirmation of your availability for each residency period, listed in order of preference.

N.B. please note that successful candidates will be required to undergo Garda Vetting and ensure that Proof of Insurance and Employer Liability arrangements are in place in order to be eligible to proceed with the Residency.

Additional supporting documentation may be provided at your discretion, such as:

- Publicity photographs
- Selected press reviews.

Site visit:

Musicians wishing to make a site visit to dlr Lexlcon Studio in advance of the submission date will be accommodated on **Tuesday 4th February 2020 at 6.00pm**. Members of the DLR Arts Office and Music Network will be available on the evening to answer any specific questions. To book a place please e-mail dlr Arts Office at arts@dlrcoco.ie with the subject line **Musicians site visit**. Site visits cannot be accommodated outside of this time.

Assessment procedure:

A panel will consider all applications received, and make decisions regarding residency allocations.

Notification of decisions:

Music Network aims to inform applicants about decisions in March 2020. All notifications will be sent by email. Please note that Dún Laoghaire-Rathdown County Council reserves the right not to appoint if none of the applications received are deemed suitable. In this instance Dún Laoghaire-Rathdown County Council reserves the right to pursue a different selection process. Dún Laoghaire-Rathdown County Council also reserves the right to amend the number of residencies and/or the scheduling of residencies in response to submissions received.

Feedback:

Feedback is readily available upon request where an application has been unsuccessful, for four weeks following communication of results. To request feedback, email Music Network's Operations Administrator, Andreas Ziemons, at operations@musicnetwork.ie stating the title of your project and contact details.

PR, Marketing and Publicity:

Musicians will work together with Music Network and DLR Arts Office to promote the performances/off-site activities and to provide PR materials, as required, including:

- biographical material
- high resolution colour photographs in digital format
- programme information.

Music Network and DLR Arts Office will promote residency activities through their websites, e-newsletters and social media. All publicity materials (hard & soft copy) **must** carry the below line of acknowledgement and the following logos: DLR Arts Office, The Arts Council and Music Network, which Music Network will provide to awardees.

“Dún Laoghaire-Rathdown County Council Musicians-in-Residence Scheme 2020”

For further information on Dún Laoghaire-Rathdown County Council Arts Office Musicians-in-Residence Scheme 2020, please contact:

Andreas Ziemons
Operations Administrator,
Music Network
National Concert Hall Building,
Earlsfort Terrace, Dublin 2
Tel: +353 1 4750224
Email: operations@musicnetwork.ie

Appendix 1: Payments/Insurance/Child Protection/ Freedom of Information/GDPR

Payments:

Payments to each Musician-in-Residence will be made by Music Network through a 2-stage process. Specified requirements must be met before payment is made at each stage. These and the accompanying payment schedule will be outlined at the initial meeting between the musician and Music Network.

Insurance:

Selected musicians agree to keep Dún Laoghaire-Rathdown County Council fully indemnified against all claims howsoever arising and howsoever caused in respect of any damage, loss or injury of any kind or nature, whether arising directly or indirectly from the provision of the residency. Evidence of Public Liability insurance indemnifying the Council with an upper limit of €6.5 million will be required.

If selected musicians engage others to collaborate with during their residency they must also have Employer's Liability Insurance of €13 million in place which indemnifies Dún Laoghaire-Rathdown County Council. It is also their responsibility to ensure that collaborating musicians, engaged by them, have Public Liability cover of €6.5 million which indemnifies both Dún Laoghaire-Rathdown County Council and the musicians.

Child Protection:

The successful candidate will be required to undergo Garda Vetting if engaging with persons that are deemed vulnerable under the National Vetting Bureau (Children and Vulnerable Persons) Act 2013 and provide any additional relevant documentation requested by Dún Laoghaire-Rathdown County Council.

Freedom of Information:

The provisions of the Freedom of Information Act 1997-2003 apply to Dún Laoghaire-Rathdown County Council. Applicants should state if any of the information supplied by them is confidential or sensitive and should not be disclosed to a request for information under the aforementioned Act. Applicants should also state why they consider the information to be confidential or commercially sensitive.

GDPR:

All information provided for this application will be held for a period of one year from the date of submission and will remain in the sole ownership of Dún Laoghaire-Rathdown County Council Arts Office and Music Network. Information supplied in the application will be used only for the purpose of the application itself, and will only be used by dlr Arts Office and Music Network for the purposes of administering and managing this particular Scheme. You may withdraw your consent to the retention of the information relating to your application at any point by sending an email to operations@musicnetwork.ie

Appendix 2: Background Information**dlr Lexlcon Library, Dún Laoghaire:**

In Autumn 2014 dlr Lexlcon, the new Central Library & Cultural Centre, opened to the public. This iconic public building is a crucial part of a programme of regeneration in Dún Laoghaire. It includes a major commitment to provide public facilities and represents the single biggest investment by the Council in a civic amenity. dlr Lexlcon is a key component in the delivery of the cultural programme in Dún Laoghaire-Rathdown and its environs. It is a vibrant centre of learning and creativity for all those who live, work in and visit the county. It accommodates general reading rooms with a rich collection of some 80,000 books.

Arts Office:

Dún Laoghaire-Rathdown County Council supports the development of the arts at a local level and aspires to provide opportunities for all who live in, work in and visit the County to engage with the arts as creators, participants and spectators.

Since the Dún Laoghaire-Rathdown County Council Arts Office was established in 1994, the County Council has developed a high quality programme including exhibitions, learning and participation initiatives, festivals, public art projects and artists' residencies.

The goals of the Arts Development Plan 2016-2022 are:

Goal 1: Public – Engage and Inspire

Goal 2: Artists – Time and Space

Goal 3: Partners – Enrich and Strengthen

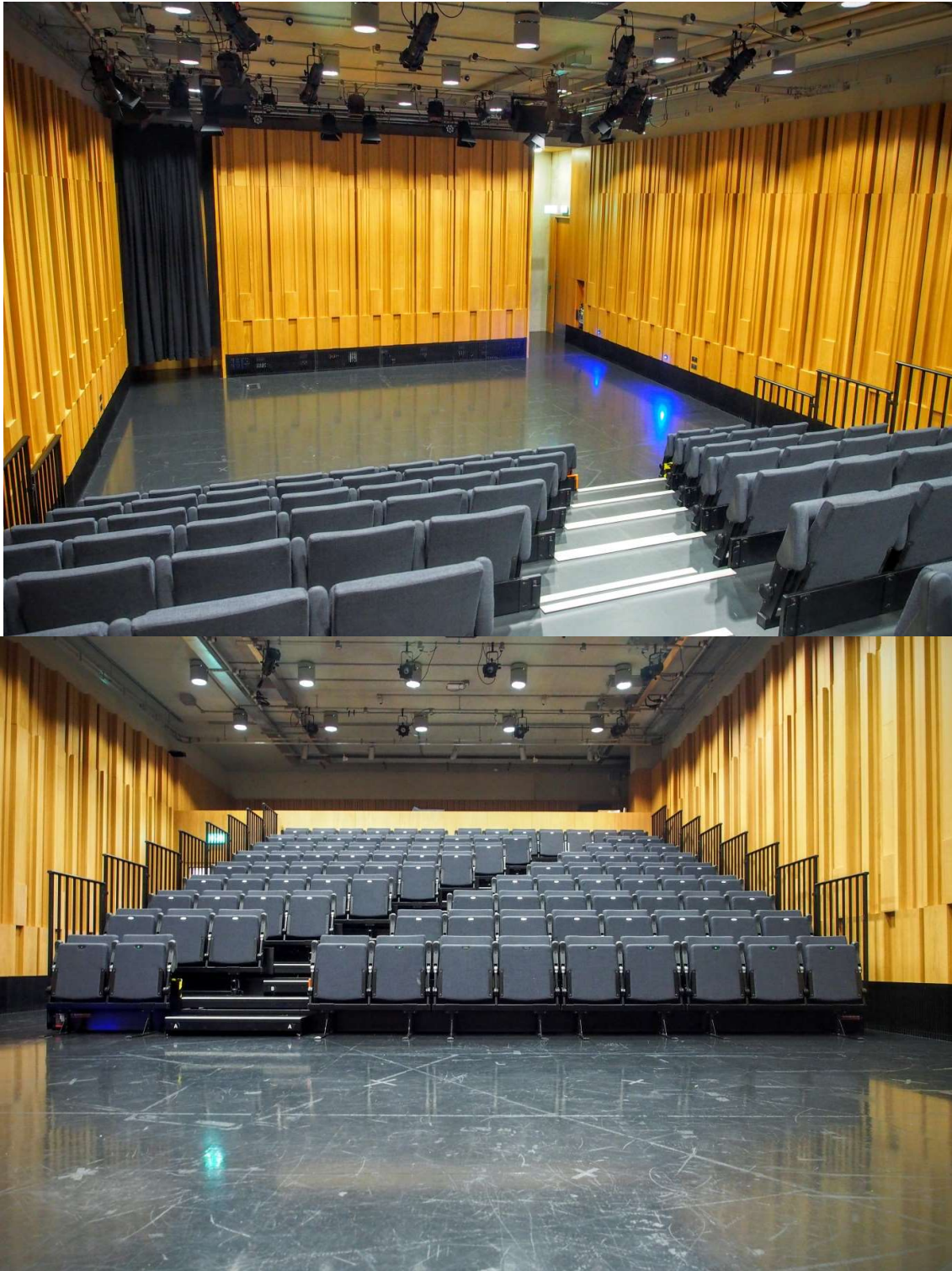
The Dún Laoghaire-Rathdown County Council Arts Office Musicians-in-Residence Scheme 2020 is jointly funded by Dún Laoghaire-Rathdown County Council and the Arts Council and is managed by Music Network.

www.dlrcoco.ie/arts

www.artscouncil.ie

www.musicnetwork.ie

dlr LexIcon The Studio



Studio

dlr Lexlcon the Studio has a seat capacity of 125; it is a versatile space and is perfect for presentations, conferences, music performances or as a black box theatre. The tiered seating can be retracted to create a full open plan area. If required an Event Curator is available to assist with the event. The following is a list of the specifications for all equipment available in the Studio.

Critical Dimensions

9160mm wide x 6500mm in standard configuration with seating bank in place

The Front row of seating can be removed to give a floor space of 9160 x 7200mm

9160mm wide x 1350mm deep with seating retracted.

4800mm to underside of lighting bars.

Please note; access is through door 1200mm wide or through 1600mm wide door via underground car-park

Please check all critical dimensions on site.

Floor plan

Detailed pdf plans attached at end of this document. AutoCAD and Vectorworks available on request.

.

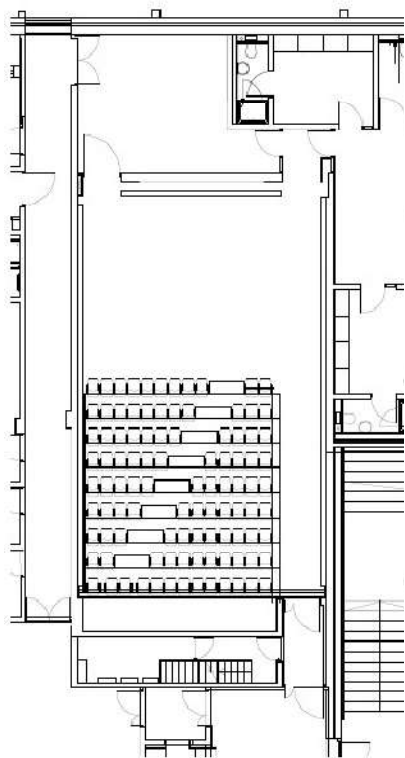


Figure 1: Standard Layout

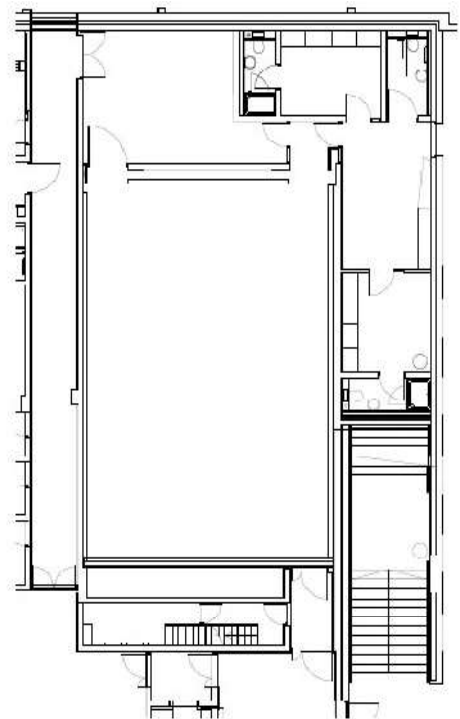


Figure 2: Layout with tiered seating retracted

A/V SPECIFICATION

PROJECTOR: *Christie DHD800 Projector*



Image	Brightness	8000 ANSI lumens with high-brightness colorwheel
	Contrast	5000 lumens with rich black reproduction
Display technology	Type	1-chip 0.95" DLP light engine
	Native resolution	1920 x 1080 full HD
Input	Signals	As per control panel – floor box 2 VGA port, HDMI port, DVD player in control booth
	Pixel clock	Analog 230 MHz
	Scan rates	Digital 160 MHz max
		Horizontal: 15-100kHz
Inputs/outputs, control and networking	Inputs	Vertical: 48-100Hz
		Input 1: DVI-D x 1(HDCP complaint), HDMI x 1(V1.3b), D-Sub 15x1
		Input 2: 5-BNC (R, G, B, H, V & Y, Pb/Cr & composite)
	Outputs	S-video DIN 4-pin x 1
Optical system		RCA x 3 (video/Y, Pb/Cb, Pr/Cr)
Lenses		Input 3: Option card slot
	Fixed	Input 4: Option card slot
		D-Sub 15 monitor out x 1
		1-chip DLP (sealed engine)
		0.8;1 (103-117100-XX)

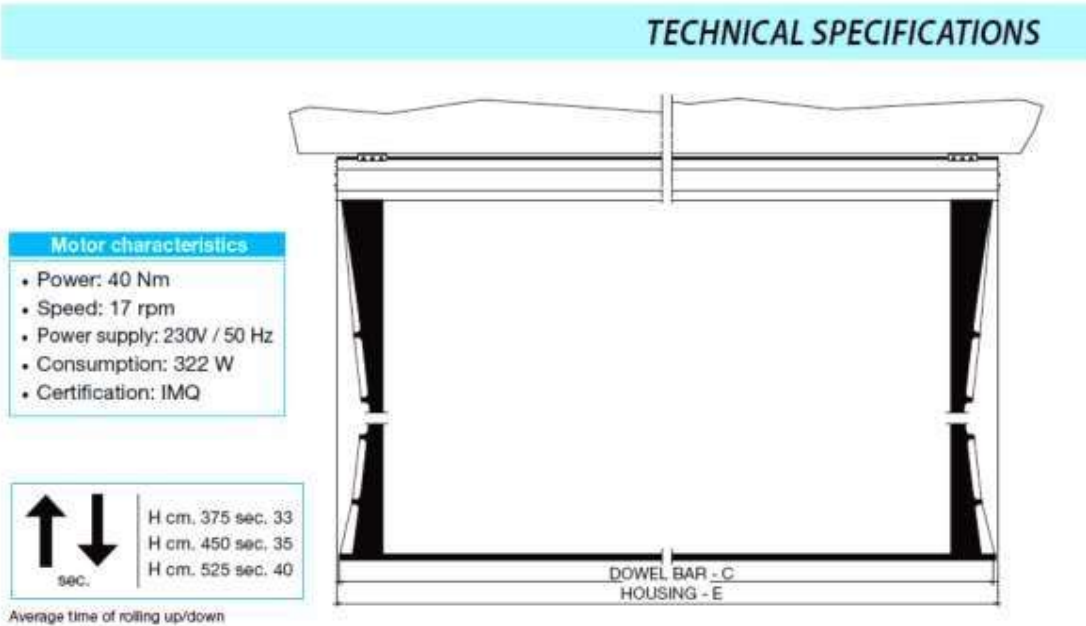
Other equipment:

LG DVD/Blu Ray player

Laptop available if required.

PROJECTOR SCREEN

An overall dim for the Studio screen is 6’200mm wide x 6’050mm high. Viewing area in a 16:9 Ratio is 5’500mm wide x 3’090mm high.



AUDIO SPECIFICATION

Equipment	Quantity
Allen & Heath QU24 digital console	1
QU24 dust cover	1
QU24LED task light	1
Martin Audio XD12 loud speakers	2
Shure SM58 microphones	6
Table top micstand	5
Stand mic stands	2
10m mic cables	12

LIGHTING SPECIFICATION

Lighting Desk:

ETC SmartFade ML

Lanterns:

16 x Source 4 Junior 25/50 Profiles

16 x ETC Source 4 Fresnel

4 x ETC Coloursource LED Pars (Currently Firmware 1.1 - 5 Chan Mode)

Note all lanterns are 16amp CEE form

Dimmers & Control:

48 Ways – Zero 88 Chilli Dimmers

24 ways hardwired to circuits

24 patchable ways available through 48 patchable circuits

6 ways – Zero 88 Chilli DMX switchable Hots

1 x Proplex DMX Opto Splitter 2 x 8.

Socapex points available in dimmer room for touring dimmers.

Additional info:

Grid Height: 4800mm

6 overhead IWBs each with 4 dimmers, 1 hot and 1 DMX hot per bar

1 IWB along each side each with 12 circuits.

These can be patched in dimmer room as dimmers or hots

DMX & Ethernet point at each bar

6 pairs of dimmers in ceiling centred above each lighting bar.

4 Facilities panels (USR/USL/DSR/DSL) each with:

6 patchable circuits (CEEform and soca)

DMX & Ethernet point

Note:

Dlr LexIcon The Studio operates with a standard lighting hang. It comprises of

2 x Front washes

1 x Back Wash

1 x LED back wash

1 x High Side wash from each side

4 x spots C/DSR/DSC/DSL

2 x Podium areas (back and front lit)

Detailed focus notes can be provided on request.

MASKING SPECIFICATION

Black wool surge drapes on a track all around the room.

These can be pulled back and hidden up stage to expose the wooden panel walls

9160

x37-42
16amp & Soca
DMX 12 & N12

7200
6500

x25-30
16amp & Soca
DMX 10 & N10

13500

u9 & u10
16amp
DMX 14 & 16
N14 & 16

u7 & u8
16amp
DMX 9 & 15
N9 & 15

x43-48
16amp & Soca
DMX 13 & N13

x33-36
16amp & Soca
DMX 11 & N11



ETC Fresnel

16 / 16



ETC Source-4 Jr 25°-50°
Zoom

16 / 16



Coloursource Par (5 Chan
Mode)

4 / 4

☒ Patchable Circuit

☐ Dimmer

☐ DMX Hot

☐ Hot

dlr Lexicon

The Studio

Standard Lighting Hang

16/05/18
Ver 3

Scale 1:75
On A4

9160

x37-42
16amp & Soca
DMX 12 & N12

7200
6500

x25-30
16amp & Soca
DMX 10 & N10

13500

u9 & u10
16amp
DMX 14 & 16
N14 & 16

u7 & u8
16amp
DMX 9 & 15
N9 & 15

x43-48
16amp & Soca
DMX 13 & N13

x31-36
16amp & Soca
DMX 11 & N11

- ☒ Batchable Circuit
- △ Dimmer
- DMX Hot
- Hot

dlr Lexicon

The Studio

Lighting Circuits

16/05/18
Ver 3

Scale 1:75
On A4

9160

7200

6500

13500

dlr Lexlcon

The Studio

Ground Plan with seats

16/05/18
Ver 3

Scale 1:75
On A4

9160

7200

6500

13500

dlr Lexlcon

The Studio

Ground Plan without seats

16/05/18
Ver 3

Scale 1:75
On A4