



**DLR PPN**

Dún Laoghaire-Rathdown  
Public Participation Network

# Dún Laoghaire Rathdown Public Participation Network

*Simone Sav - Network Manager*



# Summary

01/12/2020

- Public Participation Networks
  - Aims
  - Structure
- DLR PPN membership
- Activities
- Governance
- Current and upcoming projects
  - Community Wellbeing Survey
  - Upcoming training



# Introduction

- Public Participation Networks emerged on foot of the report of the **Working Group on Citizen Engagement with Local Government** published in 2014, which recommended greater input by communities into decision-making at local government level.
- Public Participation Networks were created to be independent networks of community, voluntary, social inclusion and environmental organisations in each county in the Republic, with 4 different ones in Co. Dublin, bringing the total to 31 PPNs, with over 15,500 member organisations nationally, after the re-registration process in 2019.



# Introduction - Aim of the PPNs

The aim of PPNs in normal circumstances is threefold:

1. To enable people, groups and organisations within the community & voluntary, environmental and social inclusion sectors to give voice to a diverse range of views and interests within the local government system and participate in policy making and oversight activities.
2. Strengthen the ability of people, groups and organisations to contribute in a positive way to the community in which they reside or are active within.
3. To act as an information hub for local community and voluntary, environmental and social inclusion groups and organisations
4. In 2020 in the context of COVID-19, the PPN became part of the Community Call Stakeholder Forum, with additional responsibilities



# Introduction

- Funding
  - Until 2019: €50,000 from DRCD + €30,000 LA - budget for activities & Resource Worker
  - From 2019: €75,700 from DRCD + €35,000 LA - activities, RW & Support Worker
  - Total €110,700
  
- Variety in terms of structure and hosting arrangements:
  - Part of the Local Authority
  - Hosted by another organisation
  - Charity
  
- Full-time and part time workers, Grade 5 or 6
  
- DLR PPN is hosted by Southside Partnership: Network Manager (FT); Support worker (PT) = total of 63 hours per week



# Introduction - Structure

## 1. Membership

Groups or organisations who join Public Participation Network choose to be part of one electoral 'college' or Pillar Group that best represents their aims and activities. There are three Pillar Groups:

**Community &  
Voluntary Pillar**

**Environmental  
Pillar**

**Social Inclusion  
Pillar**

- Social Inclusion
- Environmental
- Community & Voluntary



# Introduction - Structure

## 2. Management

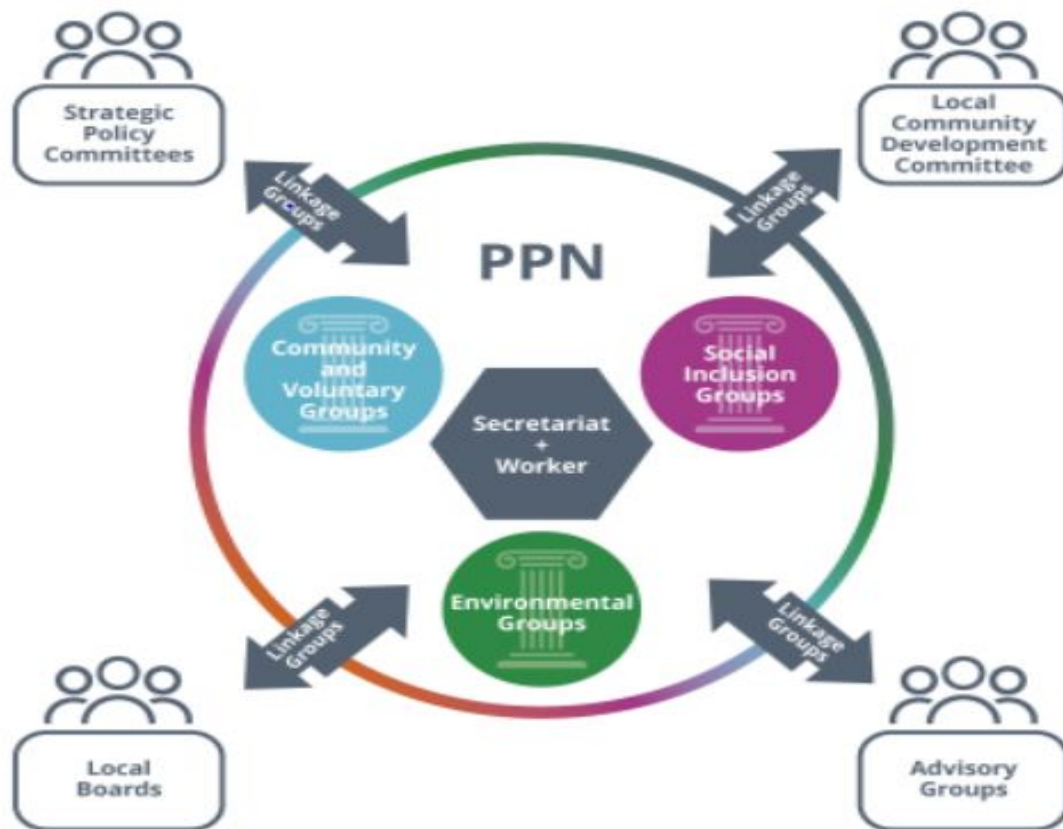
- The PPN is a **flat structure**. There is no leader or chairperson.
- The main decision making body of the PPN is the **Plenary** (i.e. all the independent member groups) which meet at twice every year to review the workings of the PPN.
- The elected **Secretariat** is responsible for the administration of the PPN between Plenary meetings.
- Linkage groups to inform the reps
- PPN Handbook :

<https://www.gov.ie/en/publication/9db5e3-ppn-handbook/?referrer=http://www.gov.ie/en/publication/9db5e3-ppn-user-guide/>

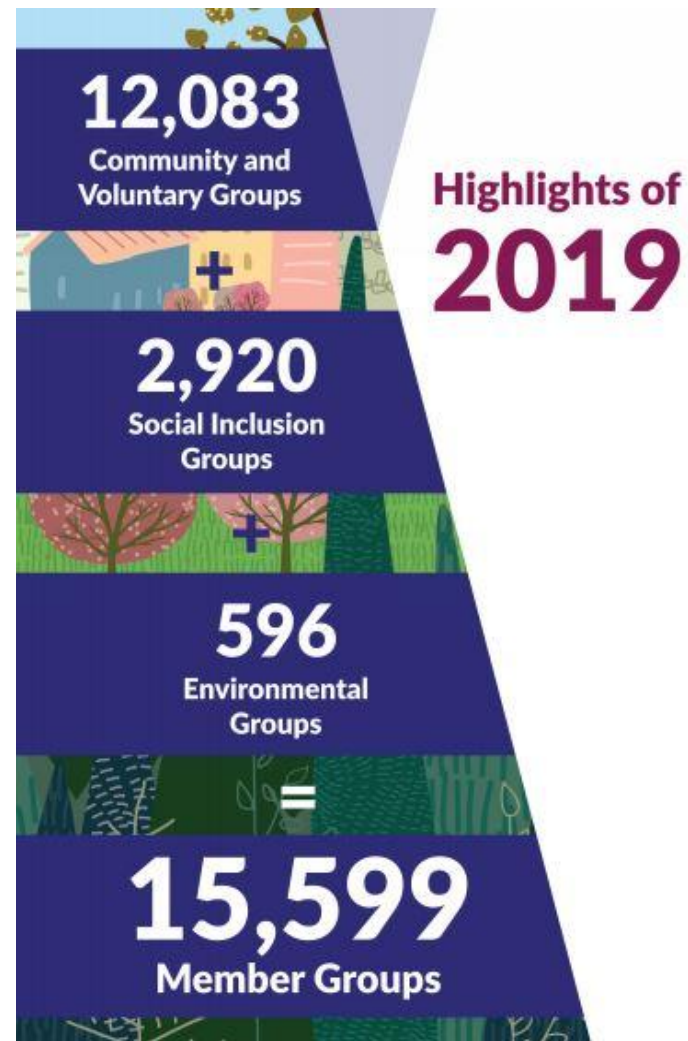


## DLR PPN

Dún Laoghaire-Rathdown  
Public Participation Network









# DLR PPN Membership

Pillars	Full Members 31/12/2018	Associate Members 31/12/2018	Full Members 31/12/2019	Associate Members 31/12/2019	Total in 2019
Community	407	-	418	21	439
Social Inclusion	92	-	99	2	101
Environmen tal	16	1	17	-	17
Total	515	-	534	23	557



**DLR PPN**  
Dún Laoghaire-Rathdown  
Public Participation Network

# DLR PPN Membership

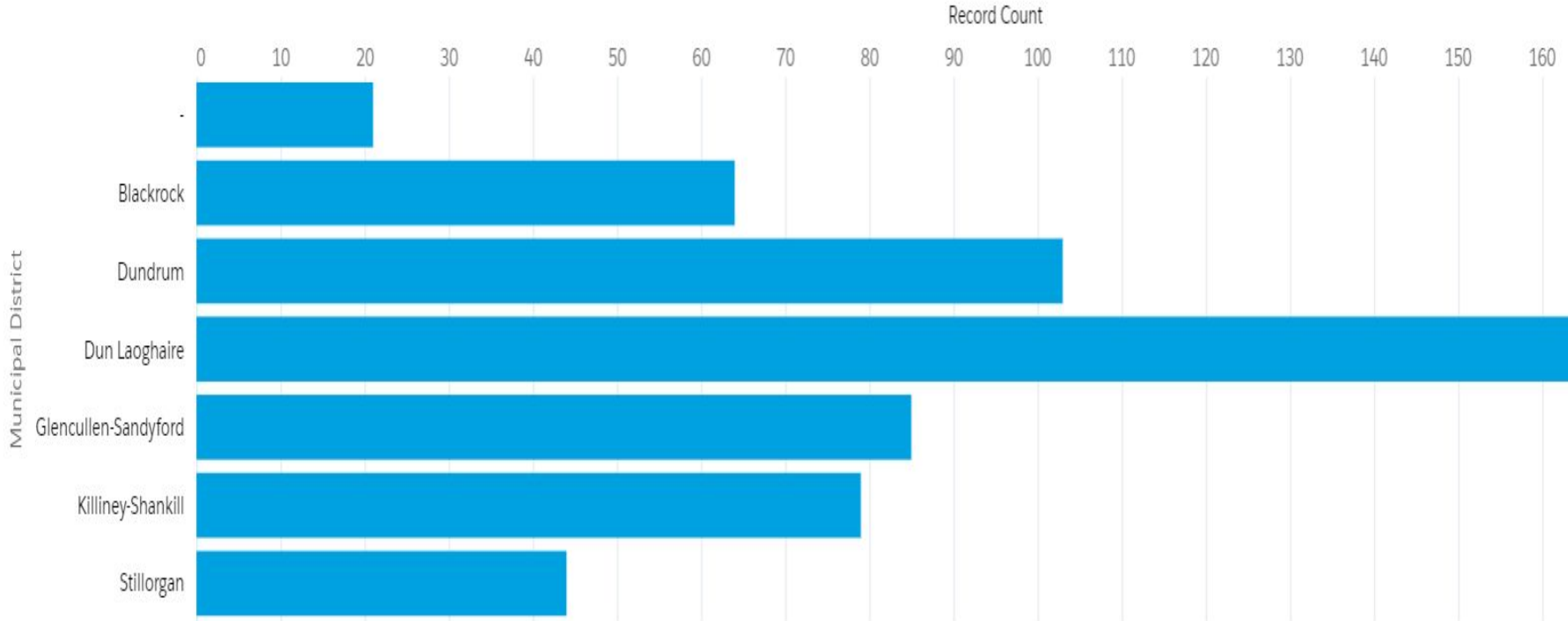
## **Membership**

- Residents Associations
- Sports Clubs
- Environmental organisations
- Retired Groups
- Charities
- Social Enterprises
- New Irish Communities groups, etc.



**DLR PPN**  
Dún Laoghaire-Rathdown  
Public Participation Network

# DLR PPN Membership





# Activities - Communication (e.g.2019)



24,573 emails sent to our members

informing members about funding, training and consultations and other relevant local, national and international news.



We produced 11 ezines and included 525 articles.

Our members submitted 335 individual news items regarding their activities.

The remaining 190 items on the topics of, Public Consultation, Participation, Grants and Training.



We produced 9 Community Connections radio shows in conjunction with Dublin South 93.9 fm.

This gives PPN members an opportunity to promote their activities and concerns.



**DLR PPN**  
Dún Laoghaire-Rathdown  
Public Participation Network

# PPN and the Local Authority

- Website, social media share, ezine, regular emails to all our membership (once a week)
- Targeted support with consultations
  - Organise consultation workshop (Digital Strategy)
  - Get in touch with specific groups (Dundrum one way system, Carrysford Bus stop) by email or by phone
- Research on the ground
  - Residents Association - April 2020
  - Community Wellbeing Survey - November, December 2020



**DLR PPN**  
Dún Laoghaire-Rathdown  
Public Participation Network

# Activities - Building Capacity

## Training

- Planning
- Digital Strategy
- Good Grant Writing
- Graphic Design
- Committee Skills
- Sustainable Energy Community
- How to organise an AGM in the context of COVID-19
- Microsoft Teams skills
- Zoom skills

## Events

Usually we organise 2 Plenary meetings (in 2019 more than 150 members attending in total):

- April 2019
- October 2019
- November 2020 (45 attending)

We participated in the dlr Age Well expo, Festival of Inclusion; organise consultation workshops (dlr Digital Strategy, etc.)



**DLR PPN**  
Dún Laoghaire-Rathdown  
Public Participation Network

# Activities - Building Capacity

We organised a Christmas get together for all DLR PPN representatives, which was an opportunity to network and meet.







**DLR PPN**  
Dún Laoghaire-Rathdown  
Public Participation Network

# Activities - Representatives

**Representatives** on the following committees (volunteers)

- Strategic Policy Committees - 23 representatives
- LCDC - 5 representatives
- Joint Policing Committee - 4 representatives

LEADER committee, Rural Task Force, Smart Dublin Advisory Group, Public Art Steering Group.

## **Linkage Groups**

In 2019 four linkage group meetings took place:

- Planning - February 2019
- Social Inclusion - October 2019
- Community and Voluntary - October 2019
- Environmental Sustainability - November 2019

In 2020 three linkage group meetings took place:

- Community & Voluntary
- Social Inclusion
- Environment

# Governance

## **Governance**

The Secretariat is the steering group of the PPN, elected by DLR PPN members. The attendance rate of the Secretariat at meetings was 71.29%

## **COMMUNITY & VOLUNTARY**

- Aileen Eglington
- Kay Gleeson
- Tony McCarthy

## **SOCIAL INCLUSION**

- Sharon Perry
- Viola Di Bucchianico
- Vacancy

## **ENVIRONMENT**

- Dara Caroll
- Gavin Harte
- Bill O'Dea



**DLR PPN**  
Dún Laoghaire-Rathdown  
Public Participation Network

# Current Projects

DLR Public Participation Network reaches to all our members by means of a short survey to find out:

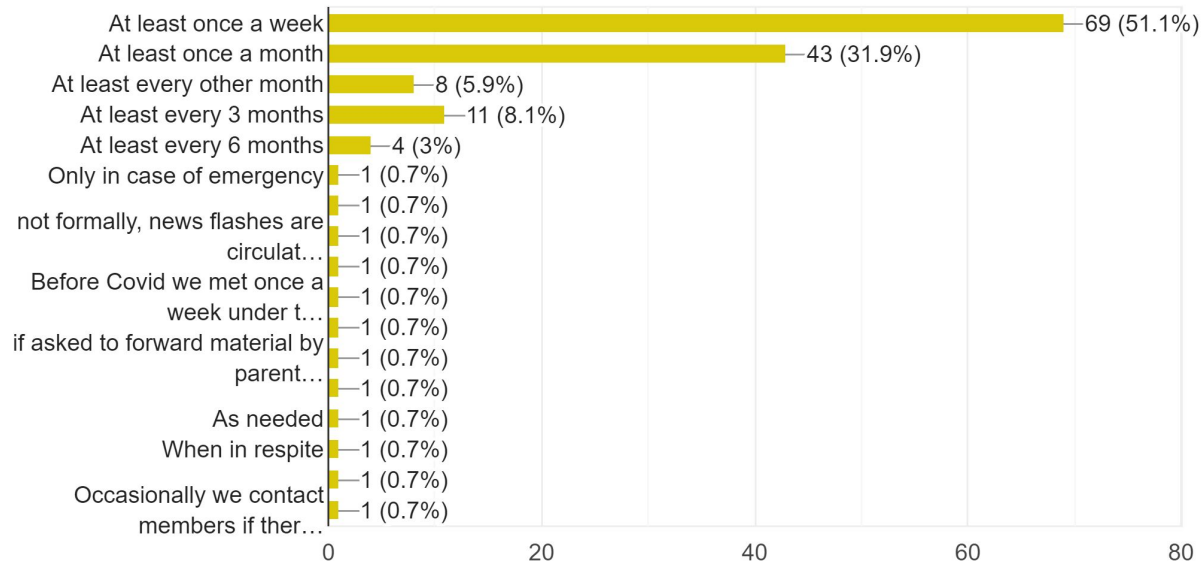
- how your community or group is coping and functioning in the current environment
- what needs you have identified
- ideas and projects that would support your community or group
- funding needs



# Community Wellbeing Survey - 135 responses

How often do you communicate with your members?

135 responses

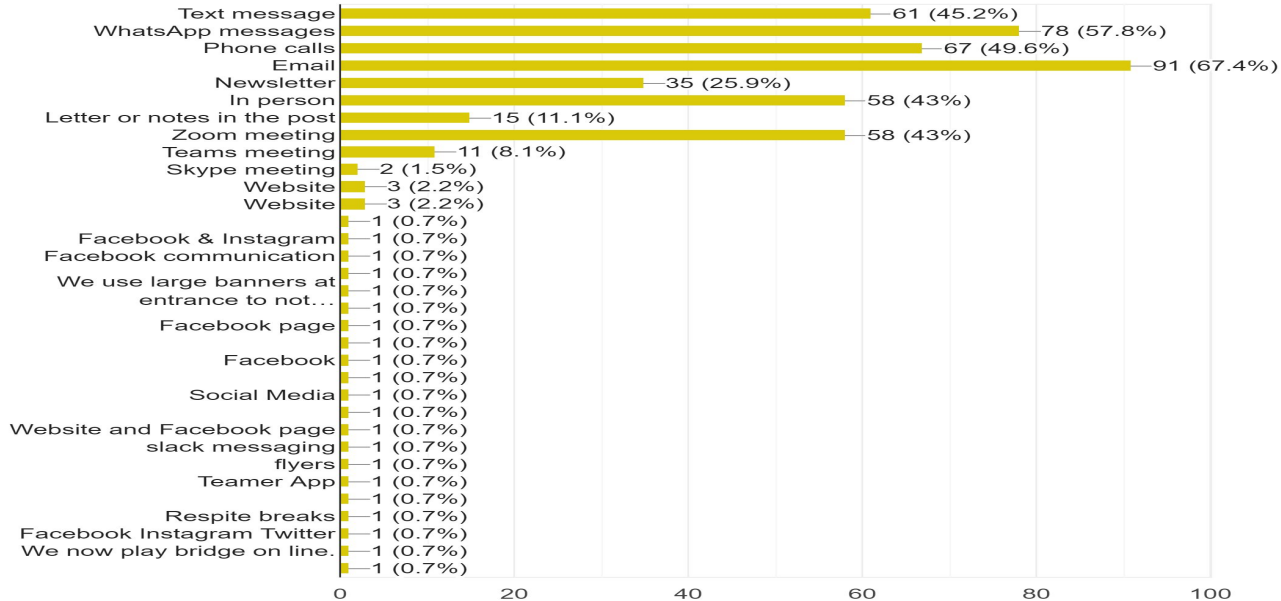




# Community Wellbeing Survey - 135 responses

How do you communicate/ reach out to the members in your group? (please select all options that apply)

135 responses

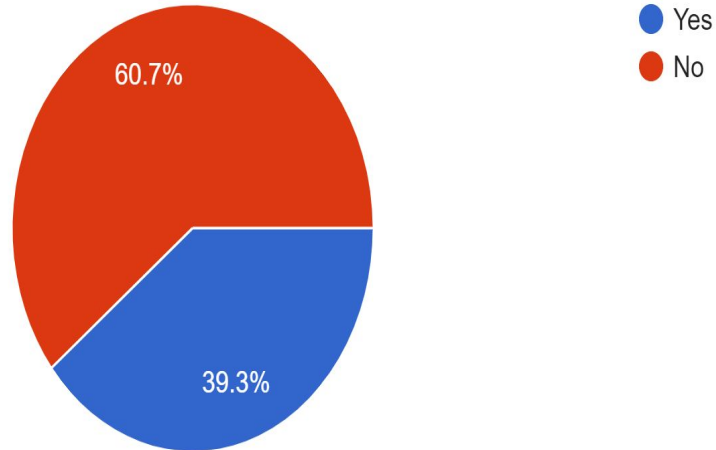




# Community Wellbeing Survey - 135 responses

To date, have you held an Annual General Meeting in 2020?

135 responses





**DLR PPN**  
Dún Laoghaire-Rathdown  
Public Participation Network

# Community Wellbeing Survey - 135 responses

## Health and safety

- COVID guidelines

## Tech

- Basic computer
- Social Media promotion
- Video/ Photo/ Editing
- Zoom



**DLR PPN**  
Dún Laoghaire-Rathdown  
Public Participation Network

# Community Wellbeing Survey - 135 responses

## Conclusions

The PPN is a local stakeholder that facilitates contact with the community

Variety and flexibility in terms of projects undertaken

Continuing collaboration with the Local Authority and other stakeholders.





**DLR PPN**  
Dún Laoghaire-Rathdown  
Public Participation Network

## Contact and useful links

- **Website:** [www.dlrppn.ie](http://www.dlrppn.ie)
- **Email:** [enquiries@dlrppn.ie](mailto:enquiries@dlrppn.ie) / [simone@dlrppn.ie](mailto:simone@dlrppn.ie)
- **Mobile:** 087 455 7945

### Links:

- <http://dlrppn.ie/dlr-ppn-annual-report-2019/>
- <http://dlrppn.ie/public-participation-network-2019-annual-report/>
- <https://www.gov.ie/en/publication/9db5e3-ppn-handbook/?referrer=http://www.gov.ie/en/publication/9db5e3-ppn-user-guide/>