

Mapping Notes

1.

When printing this map, colours may vary depending on type of printer used. Please refer to dlr website for definitive colours.

2.

Wave Overtopping layer is relevant to the following maps only:  
Map No's 2, 3, 4, 7, 10 & 14 unless noted otherwise.

Flood Zone

Map

COMHAIRLE CHONTAE DHÚN LAOGHAIRE-RÁTH AN DÚIN

DÚN LAOGHAIRE-RATHDOWN COUNTY COUNCIL

COUNTY DEVELOPMENT PLAN 2022-2028

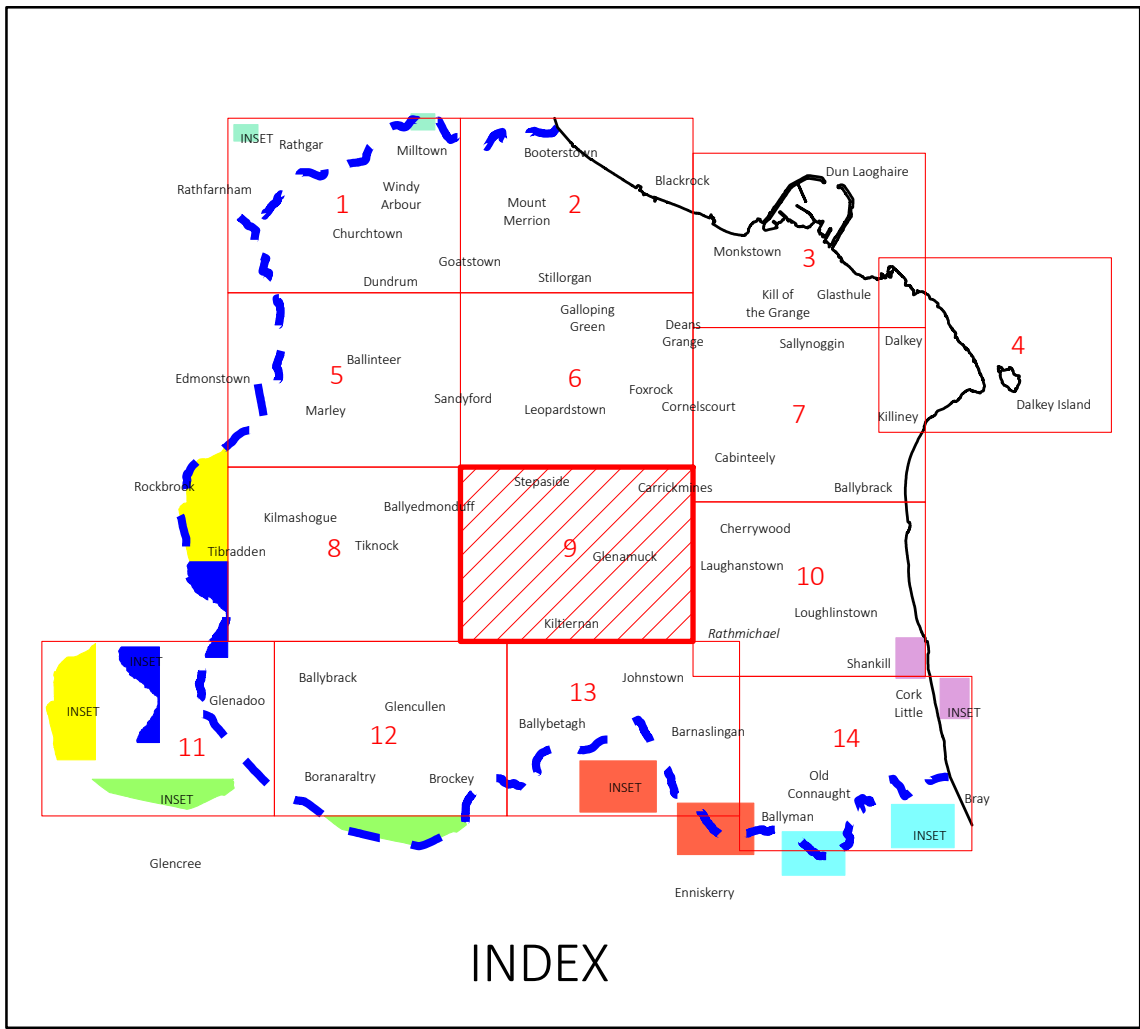
Proposed Amendments to Draft Plan November 2021



Comhairle Contae County Council



Comhairle Contae County Council



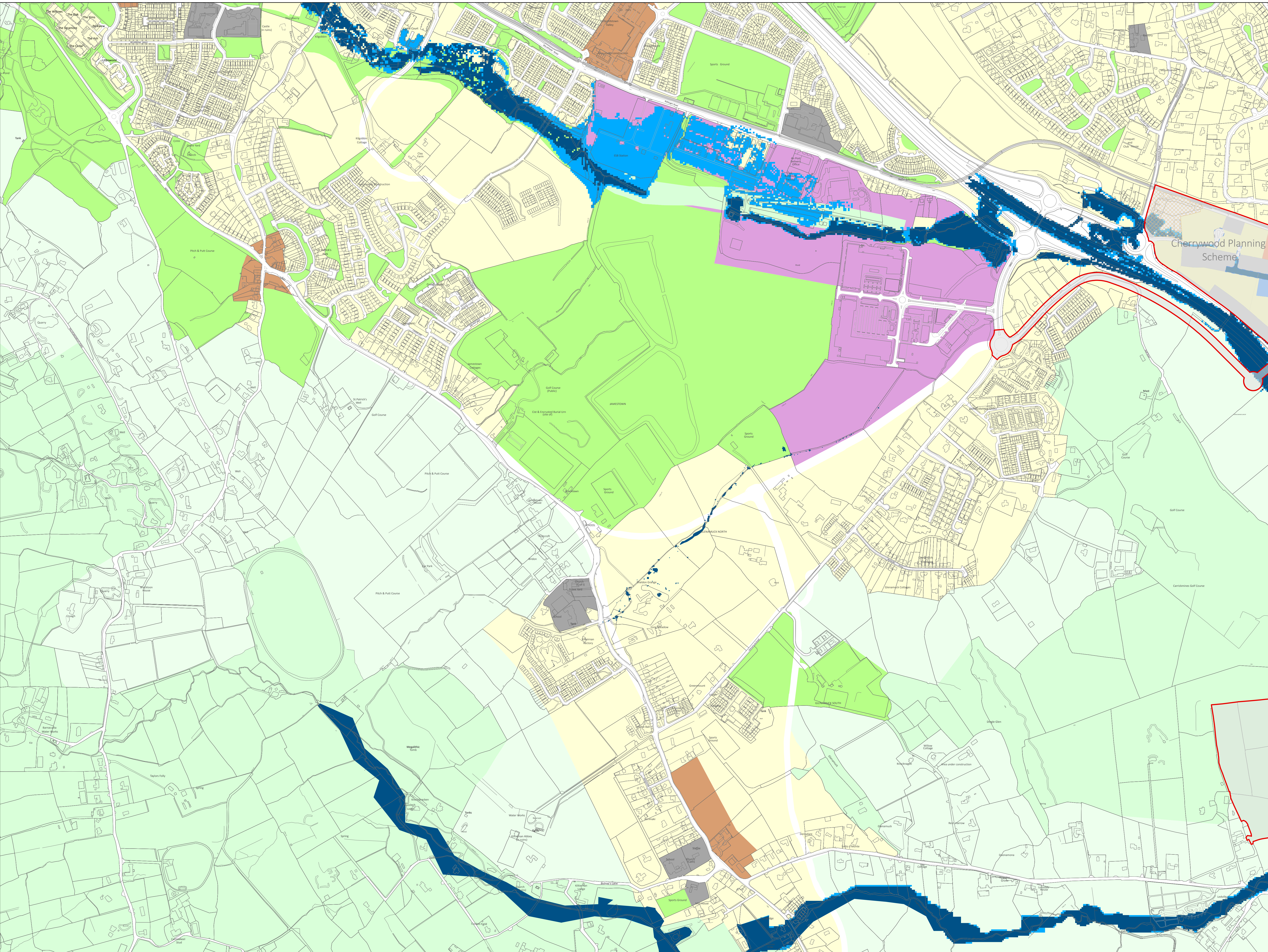
Amendments to Flood Map

Flood Zones A & B colours amended

Wave Overtopping layer added

Mapping Note 2 added

9



Land Use Zonings

Objective A To provide residential development and/or protect and improve residential amenity

Objective A1 To provide for new residential communities and Sustainable Neighbourhood Infrastructure in accordance with approved local area plans.

Objective A2 To provide for the creation of sustainable residential neighbourhoods and preserve and protect residential amenity.

Objective B To protect and improve rural amenity and to provide for the development of agriculture.

Objective DC To protect, provide for and/or improve mixed-use district centre facilities.

Objective E To provide for economic development and employment.

Objective F To preserve and provide for open space with ancillary active recreational amenities.

Objective G To protect and improve high amenity areas.

Objective GB To protect and enhance the open nature of lands between urban areas.

Objective LIW To improve and provide for low density warehousing/light industrial warehousing uses

Objective MIC To consolidate and complete the development of the mixed use inner core to enhance and reinforce sustainable development.

Objective MDC To provide for a mix of uses which complements the inner core, but with less retail and residential and more emphasis on employment and services.

Objective MTC To protect, provide for and/or improve major town centre facilities.

Objective NC To protect, provide for and/or improve mixed-use neighbourhood centre facilities.

Objective OE To provide for office and enterprise development.

Objective TU1 To facilitate, support and enhance the development of third level education institutions.

Objective W To provide for waterfront development and harbour related uses.

Objective SNI To protect, improve and encourage the provision of sustainable neighbourhood infrastructure

County Boundary

Areas of Flood Risk Concern

Fluvial - Surface Water

Pluvial - Surface Water

Pluvial - Foul

Flood Zone A

Flood Zone B

Wave Overtopping

County Boundary

Boundary of Adopted Cherrywood Planning Scheme

0 50 100 200 300 400 500

Metres

© - Ordnance Survey Ireland, 2020

Director of Planning: M Henchy

Senior Planner: L McGauran