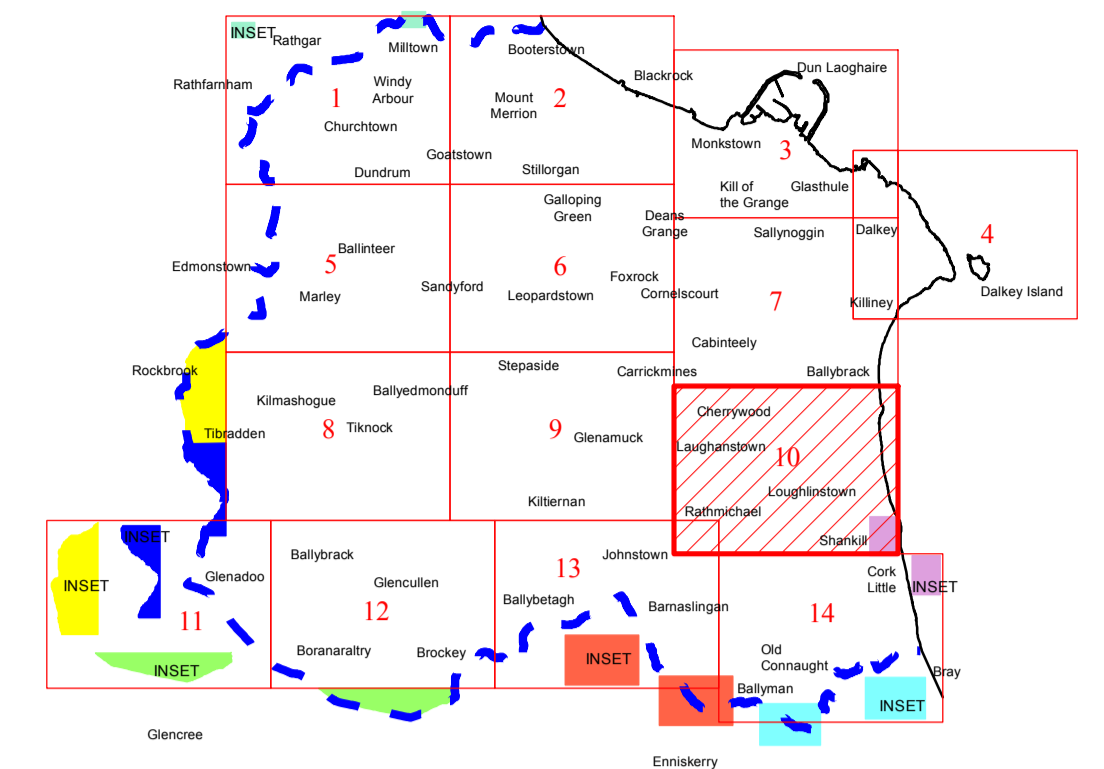


# COMHAIRLE CHONTAE DHÚN LAOGHAIRE-RÁTH AN DÚIN

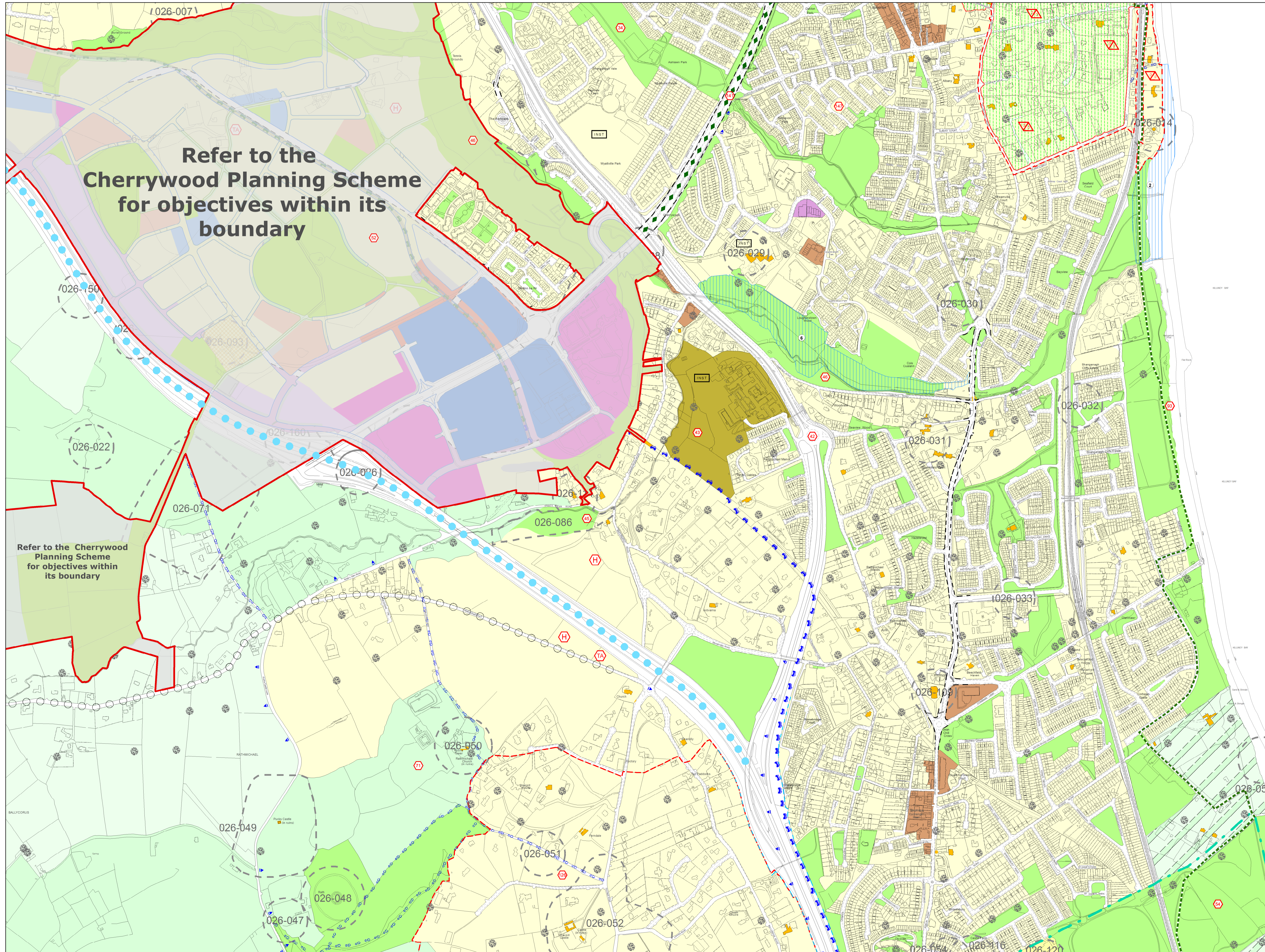
# DÚN LAOGHAIRE-RATHDOWN COUNTY COUNCIL

## COUNTY DEVELOPMENT PLAN 2016-2022

### Adopted March 2016



INDEX



#### USE ZONING OBJECTIVES

Objective A	To protect and/or improve residential amenity.	
Objective A1	To provide for new residential communities in accordance with approved local area plans.	
Objective A2	To provide for the creation of sustainable residential neighbourhoods and preserve and protect residential amenity.	
Objective B	To protect and improve rural amenity and to provide for the development of agriculture.	
Objective DC	To protect, provide for and/or improve mixed-use district centre facilities.	
Objective E	To provide for economic development and employment.	
Objective F	To preserve and provide for open space with ancillary active recreational amenities.	
Objective G	To protect and improve high amenity areas.	
Objective GB	To protect and enhance the open nature of lands between urban areas.	
Objective LIW	To improve and provide for low density warehousing/light industrial warehousing uses.	
Objective MH	To improve, encourage and facilitate the provision and expansion of medical/hospital uses and services.	
Objective MIC	To consolidate and complete the development of the mixed use inner core to enhance and reinforce sustainable development.	
Objective MOC	To provide for a mix of uses which complements the inner core, but with less retail and residential and more emphasis on employment and services.	
Objective MTC	To protect, provide for and/or improve major town centre facilities.	
Objective NC	To protect, provide for and/or improve mixed-use neighbourhood centre facilities.	
Objective OE	To provide for office and enterprise development.	
Objective TLI	To facilitate, support and enhance the development of third level education institutions.	
Objective W	To provide for waterfront development and harbour related uses.	

#### OTHER OBJECTIVES

6 Year Road Proposal	
6 Year Motorway Proposal	
Strategic Road Reservation	
Long Term Road Proposal	
Long Term Motorway Proposal	
Proposed Luas Line Extension	
Proposed Quality Bus/Bus Priority Route	
Public Right-of-Way	
Recreation Access Route	
Wicklow Way	
Proposed Sutton to Sandycove Walkway/Cycleway as a component part of the National East Coast Trail Cycle Route	
Protected Structures	
Record of Monuments and Places (For Areas of Archaeological Potential)	
Architectural Conservation Area	
Candidate Architectural Conservation Area	
"The Metals" Candidate Architectural Conservation Area	
Natura 2000 (SPA and cSAC Areas)	
Proposed Natural Heritage Areas	
To preserve Views	
To preserve Prospects	
To protect and preserve Trees and Woodlands	
No increase in the number of buildings permissible	
To protect and/or provide for a Burial Ground	
Boundary of Adopted Cherrywood Planning Scheme	
Boundary of Urban Framework Plan	
Boundary of lands for which a Local Area Plan will be prepared	
Boundary of Local Area Plan	
Boundary of Objective Area	
Specific Local Objective	
To provide accommodation for the Travelling Community	
County Council Housing Programme Site	
To provide for a Primary School	
To provide for a Post Primary School or other Institution	
To protect and/or provide for Institutional Use in open lands	
Mews Development Acceptable in Principle	
County Boundary	

Note:  
1. The lines of the Road Proposals shown are diagrammatic only and may be subject to change.  
2. The provisional alignment of the S2S National East Coast Trail Cycle Route is diagrammatic only and may be subject to change.  
3. The boundaries of any proposed Local Area Plans are indicative only and may be subject to change.

0 50 100 200 300 400 500 Metres

Director of Planning and Organisational Innovation: M Henchy  
Senior Planner: D Irvine