



# SPRING *into* HERITAGE

24 April – 18 June 2017



Like us at  
[facebook/dlrheritageevents](https://facebook/dlrheritageevents)



Follow us at  
[instagram/dlrheritageevents](https://instagram/dlrheritageevents)



Follow us at  
[twitter/dlrheritevents](https://twitter/dlrheritevents)



#lovedlrheritage



# AT A GLANCE

24 April – 18 June 2017

Most events are free  
and places are limited,  
so turn up early!

VENUE	DAYS	TIMES
MARLAY HOUSE	Mon & Wed	11am – 3pm
CABINTEELY HOUSE	Tues & Thurs	11am – 3pm
THE ORATORY	Wed & Sat	11am – 3pm
MARITIME MUSEUM	Mon & Wed	11am <b>Pre-booking required</b>
DALKEY CASTLE	Sundays	2.40pm <b>Pre-booking required</b> (See listing for school dates)
JAMES JOYCE TOWER & MUSEUM	Mon - Sun	10.30 am & 2.30pm
SEAPOINT MARTELLO TOWER	Thurs	11am – 3pm
DÚN LAOGHAIRE HARBOUR TOUR	Tues & Thurs	11.00am
DUBLIN BAY BIOSPHERE TOUR*		<b>Pre-booking required</b>
School	Wed	9.00am & 2.15pm
Public	Wed	9.00am, 11.00am, 12.30pm, 2.15pm & 3.30pm

\*Requires payment

Dublin's destination for  
**DELICIOUS**



*Exchequer Street*

FOOD HALL | RESTAURANT | WINE CELLAR

11-17 Exchequer Street, Dublin 2

Tel: +353 1 472 1010

In a unique heritage building in the heart of the city, Fallon & Byrne is a true mecca for food lovers - a romantic, candlelit wine cellar in the basement; a world-class food hall at ground level, and a stunning, sun-dappled restaurant upstairs. This is a unique food and wine offering, combined with a beautiful setting and a magical atmosphere, that has captured the hearts of locals and visitors alike.



*People's Park*

RESTAURANT | CAFÉ | DELI

Park Road, Dun Laoghaire, Co. Dublin

Tel: +353 1 230 3300



Nestled in a beautifully restored Victorian building, Fallon & Byrne's newest home is waiting to welcome you with open arms. Relax in the spacious and sunlit dining room, or eat al fresco on the terrace as you overlook the park and its extraordinary sea views. With a wonderful seaside locale, and a pretty promenade for an afternoon stroll, the dreamy surroundings make for a delightful day out.

[www.fallonandbyrne.com](http://www.fallonandbyrne.com) | [ask@fallonandbyrne.com](mailto:ask@fallonandbyrne.com)



# Wicklow Way Café

**NOW OPEN AT THE GOLF  
PAVILION, COLLEGE ROAD  
ENTRANCE TO MARLAY PARK.**



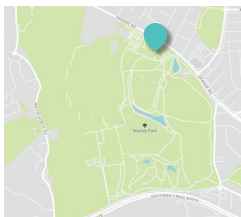
**Open every day, from early until  
late all summer. Now with full  
wine license.**

Serving cooked breakfast, salads, light snacks, full lunches as well as delicious desserts. With panoramic views of Marlay Park the café offers the perfect setting for a relaxing cup of our freshly ground coffee and the very best food freshly prepared daily by our chefs.

# MARLAY HOUSE

*Free Guided Tour*

Monday and Wednesday. 24 April – 14th June



**Bus Stop No. 2979**  
**Grange Road,**  
**Highfield Avenue**

Routes serving this stop:  
116 Towards Whitechurch  
16 Towards Dublin Airport  
161 Towards Rockbrook/  
Tibradden  
16c Towards City Centre

**Bus Stop No. 2969**  
**Grange Road,**  
**Highfield Avenue**

Routes serving this stop:  
116 Towards Parnell Sq.  
16 Towards Ballinteer (Kingston)  
161 Towards Dundrum Luas  
Station

Take a guided tour of this wonderful country house. Hear the story of how the original 17th Century house, called The Grange was purchased in 1764 by David La Touche of French Huguenot origin, extended, and renamed Marlay, and was then sold in 1864 to Robert Tedcastle, the well known Dublin coal merchant. The Tedcastle family lived at Marlay until 1925. In 1925 Philip Love (a market gardener, who at one time was the largest tomato producer in Ireland) acquired the House.

Meet at the front steps of  
**Marlay House,**  
**Marlay Park,**  
**Rathfarnham, Co. Dublin.**

11am – 3pm  
Tours on the hour,  
4 tours per day, last tour 2pm.

Tour Duration: 60 minutes

Limited wheelchair access.  
Please phone in advance if you  
require wheelchair access.

Max Capacity: 30 people

# CABINTEELY HOUSE

*Free Guided Tour*

**Tuesday and Thursday. 25 April – 15 June**

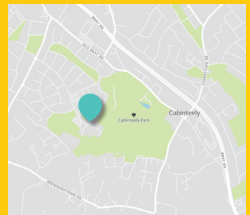


Take a guided tour of Cabinteely House, a stunning eighteenth-century country house. Hear the colourful story of the house including, its original owner Robert Nugent and his rise up the social and political ladder, as well as Joseph McGrath, revolutionary and key figure in the Irish Sweepstakes.

Meet at the front of Cabinteely House, Cabinteely Park, Cabinteely, Co. Dublin.

11am – 3pm  
Tours on the hour,  
4 tours per day, last tour 2pm.

Tour duration: 60 minutes



**Bus Stop No. 3309  
Cornelscourt Hill,  
Kerrymount Green**  
Routes serving this stop:  
63 Towards Kilternan

**Bus Stop No. 3307  
Cornelscourt Hill,  
Kerrymount Green**  
Routes serving this stop:  
63 Towards Dún Laoghaire

Limited wheelchair access.  
Please phone in advance if  
you require wheelchair access.

Max capacity: 30 people

# Tranquil Tea Rooms

---

Pop in and enjoy our freshly baked raspberry scones and cakes especially our famous coffee cake. Freshly brewed coffee and loose leaf tea.

---

**OPEN TUESDAY TO SUNDAY**

Located just inside the main  
Deansgrange Cemetery gate.



# NATIONAL MARITIME MUSEUM

## *Free Guided Tour*

Monday and Wednesday. 24 April – 14 June

THIS EVENT  
MUST BE  
PRE-BOOKED

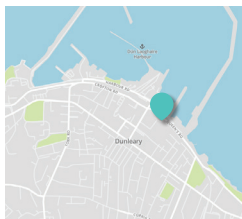


The Museum is housed in Dún Laoghaire's 180-year-old Mariners' Church, opposite the dlr Lexicon. Experienced guides will bring you on a voyage of discovery enthralling you with stories of discovery, heroism, war and disasters at sea. You will learn about maritime history, exploration, navigation, radio, deep-sea cable technology, nature and art inspired by the sea and relevant to the school syllabus. See the revolving Bailey Optic, try the electrified steam engine and pause to reflect at the Titanic exhibit, the Royal Navy prisoner's docks and the war memorial. Try sailor's knots, learn how they lift heavy weights, be photographed with the pirate and much more.

**Wheelchair accessible**

11am  
1 tour per day  
2 tours per week.

Tour duration: 60 minutes



**Dart Stations**  
Dún Laoghaire

**Bus Stop No. 3046**  
**George's Street,**  
**Shopping Centre**

Routes serving this stop:  
111 Towards Dalkey  
59 Towards Killiney

**Bus Stop No. 3070**  
**George's St,**  
**Mulgrave Street**

Routes serving this stop:  
111 Towards Brides Glen  
(Luas Station)  
45a Towards Dún Laoghaire  
(Rail Station)  
59 Towards Dún Laoghaire  
7 Towards Mountjoy Sq.  
7a Towards Mountjoy Sq.

T: 01 214 3964 / 01 280 0969

E: [bookings@mariner.ie](mailto:bookings@mariner.ie)

W: [mariner.ie](http://mariner.ie)

Max capacity: 30 people



# DLR LEXICON

dlr Lexlcon is the centrepiece of a new public space in Moran Park. It houses a public library — a key community space where all are welcome, the municipal gallery, the Studio theatre space, extensive exhibition and performance spaces, a local history level and meeting rooms. There are 100 study spaces, 60+ computers for public use and 80,000 items in the adult and junior libraries. The building is fully accessible to people with disabilities and Brambles Café is situated on the Moran Park Level. The What's On guide is produced quarterly and is available at the Lexlcon, all dlr branch libraries and online via the website. The website gives library members access to services, resources and subscription websites, even when the library is closed.

## Opening times

Monday – Thursday 9.30am – 8.00pm

Friday – Saturday 9.30am – 5.00pm

## dlr Lexlcon

Haigh Terrace, Moran Park

Dún Laoghaire, Co. Dublin

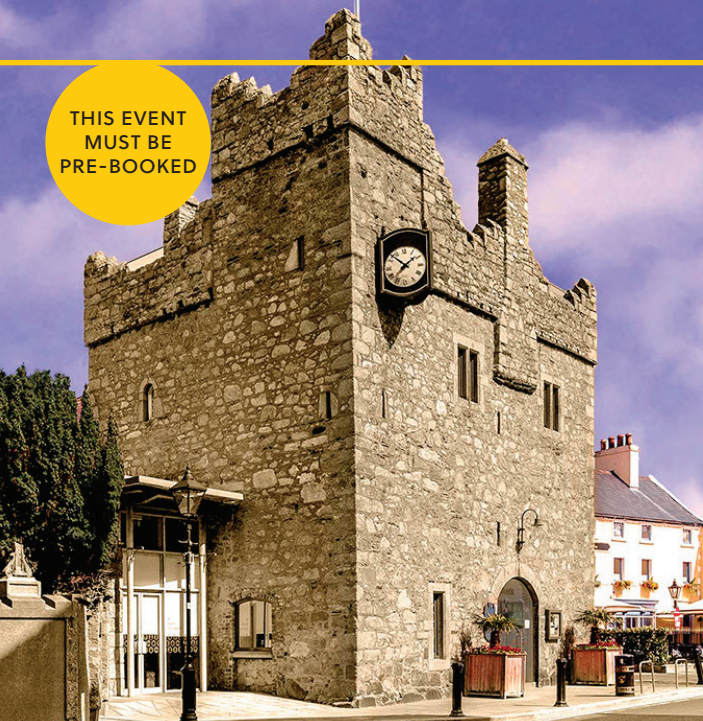
- ☎ 01 280 1147
- ✉ [dlrlexiconlib@dlrcoco.ie](mailto:dlrlexiconlib@dlrcoco.ie)
- 🌐 [libraries.dlrcoco.ie](http://libraries.dlrcoco.ie)
- 📘 dlr libraries
- 📱 @dlr\_libraries



# DALKEY CASTLE

*Free Guided Tour*

THIS EVENT  
MUST BE  
PRE-BOOKED



Visit Dalkey Castle & Heritage Centre...where 21st Century technology meets 15th Century living history...the best of both worlds! Actors bring history to life with a fun-filled theatre performance as part of the guided tour.

On site there is a Medieval Castle/Fortified Townhouse, an Early Christian Church and a state-of-the-art Heritage Centre. The Writers' Gallery has portraits and interactive screens with the work of 45 writers and creative artists from Joyce and Beckett to Binchy and Bono and more!

**Tour Times Sundays at 2.40pm. April 30th – June 18th**  
**Max Capacity 20 people. Tour Duration 60 minutes.**

## **Join Dalkey Castle's School Programme**

April 24th - 28th (excl Tuesday 25th)

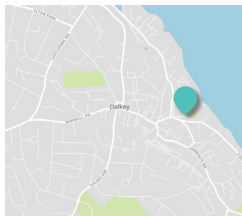
Time 10.00am

Length: 1 hour 45 minutes approx

Tel: 01 285 8366

Email: [info@dalkeycastle.com](mailto:info@dalkeycastle.com)

**Must be pre-booked**



# THE TEA ROOMS

—  
*At Victoria Hill, Killiney Hill Park.  
Opposite St. Stephens Church*  
—

Visit this quaint little oasis and experience the wonderfully relaxed ambience of the Tea Rooms at Victoria Hill. Enjoy our freshly ground coffee and a selection of artisan foods and scrumptious pastries, all served up by our friendly staff.

**OPEN 9 TO 6—EVERY DAY.**



# SEAPOINT MARTELLO TOWER

## *Free Guided Tour*

Thursday, 27 April – 15 June



The Martello Tower at Seapoint was one of a series of towers and batteries built between Bray and Balbriggan in 1804 – 1805 to repel a threatened French invasion. A unique story told in a unique location.

This is an indoor and outdoor event. Suitable footwear is essential and bare feet are not allowed. Children MUST be accompanied by an adult.

### Dart Stations

Seapoint and Salthill

### Bus Stop No. 3038

**Monkstown Rd,  
Belgrave Square**

Routes serving this stop:  
7 Towards Brides Glen Luas  
7a Towards Loughlinstown

### Bus Stop No. 3075

**Monkstown Rd,  
Queen's Park**

Routes serving this stop:  
7 Towards Mountjoy Sq.  
7a Towards Mountjoy Sq.

11am – 3pm  
Tours on the hour,  
4 tours per day, last tour 2pm.

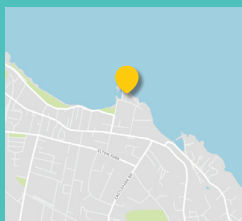
Tour Duration: 45 minutes

Not wheelchair accessible.  
Access to roof is very  
restricted.

Max Capacity: 15 people

# JAMES JOYCE TOWER & MUSEUM *Free Guided Tour*

Monday to Sunday. 24 April – 09 June



The James Joyce Tower & Museum at Sandycove is staffed by volunteers from the Friends of Joyce Tower Society. The tower is open from 10.00 am until 6.00 pm every day.

---

**Bus Stop No. 3052**  
**Sandycove Rd,**  
**Sandycove Ave**

Routes serving this stop:  
111 Towards Dalkey  
59 Towards Killiney  
7d Towards Dalkey

---

**Bus Stop No. 3063**  
**Sandycove Rd,**  
**Buckley Galleries**

Routes serving this stop:  
111 Towards Brides Glen  
(Luas Station)  
59 Towards Dún Laoghaire  
7d Towards Mountjoy Sq.

Each day, at 10.30 am and again at 2.30 pm, for the duration of the 'Spring into Heritage' programme, one of these enthusiastic and knowledgeable volunteers will show you around the most famous building in world literature where James Joyce's masterpiece begins.

You will learn why this Martello Tower was built and its association with James Joyce. You can also enjoy the absolutely stunning views of Dublin Bay from the top of this iconic building.

Tours of Tower & Museum are free.

---

10.30 am & 2.00 pm  
2 Tours per day.

---

Not wheelchair accessible.  
Access to roof is very  
restricted.

---

Tour Duration: 60 minutes

---

Max Capacity: 25 people

# CO CO Markets Summer of Fun



Summer is coming and with longer days there's more time in the parks to visit the Markets. Come see the wide range of products and sample the best foods on offer to find your favourites.

With the scenic locale and family friendly environment, why not visit the Markets on the weekend. With Marlay Market running on Saturday & Sunday and The People's Park on Sunday you could start a new tradition for the weekends or maybe revive an old one!

Following the success of 2016 the Summer of Music is back. CoCo Markets are re-launching the summer season with a call for musicians to perform in our Markets each weekend from July to mid-September.

The CoCo Markets are also in the process of arranging great, free, family friendly activities in the Markets this summer with attractions for everyone.

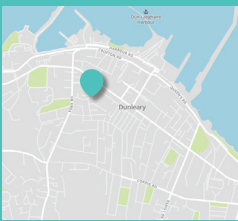
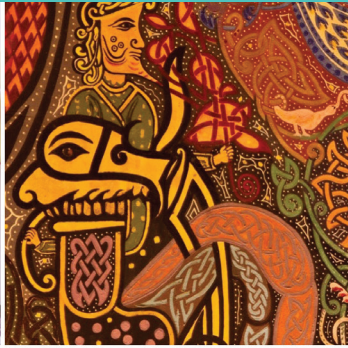


Keep an eye on our website at: [www.dlrcoco.ie/markets](http://www.dlrcoco.ie/markets) as well as the Council's Facebook and Twitter for details of acts, activities and dates, #cocomarkets.

# THE ORATORY

*Free Guided Visit and DVD Presentation*

**Wednesday and Saturday. 26 April – 17 June**



## **Dart Stations** DúnLaoghaire

### **Bus Stop No. 2035** Clarence Street, Crofton House

Routes serving this stop:  
111 Towards Dalkey  
46a Towards Dún Laoghaire  
63 Towards Dún Laoghaire  
7 Towards Brides Glen Luas  
75 Towards Dún Laoghaire  
7a Towards Loughlinstown

### **Bus Stop No. 2041** George's St, Bloomfield

Routes serving this stop:  
46a Towards Phoenix Park  
63 Towards Kilternan  
7 Towards Mountjoy Sq.  
75 Towards Tallaght (The Square)  
7a Towards Mountjoy Sq.

**11am – 3pm**  
Tours on the hour,  
4 tours per day, last tour 2pm.

**Tour Duration: 40 minutes**

The Oratory in Dún Laoghaire is a hidden gem of Celtic revival art. This tiny building is home to some of the most spectacular artwork from the first half of 20th Century Ireland, all produced by Sister Concepta Lynch. This tour is not to be missed!

**Library Road entrance,**  
Dún Laoghaire, Co. Dublin.  
(entrance is beside the children's  
playground on Library Road).

**Wheelchair accessible.**

**Max Capacity: 15 people**

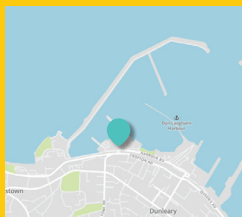
# DÚN LAOGHAIRE HARBOUR WALK *Free Guided Tour*

Tuesday and Thursday. 30 May – 15 June



The construction of Dún Laoghaire Harbour began two centuries ago in 1817. Join our tour to hear about the earlier harbour and how the present harbour was built; see some of the lesser-known features of this most magnificent piece of engineering, as we walk along the landward side of the harbour to the former ferry port.

Meet at the bridge over the Dart line at Crofton Road.



**Dart Stations**  
Dún Laoghaire

**Bus Stop No. 2039**  
Crofton Road,  
Railway Station

Routes serving this stop:  
46a Towards Phoenix Park  
46a Towards Dún Laoghaire  
63 Towards Dún Laoghaire  
63 Towards Kiltarnan

11.00 am  
1 tour per day.

Wheelchair accessible.

Tour duration: 60 minutes

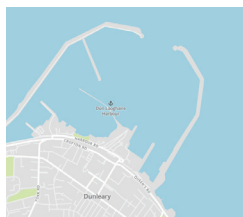
Max capacity: 30 people



# DUBLIN BAY BIOSPHERE TOUR *A Guided Tour*

Wednesday, 26 April – 14 June

THIS EVENT  
MUST BE  
PRE-BOOKED



**Dart Stations**  
Dún Laoghaire

**Bus Stop No. 2039**  
Crofton Road,  
Railway Station

Routes serving this stop:  
46a Towards Phoenix Park  
46a Towards Dún Laoghaire  
63 Towards Dún Laoghaire  
63 Towards Kilternan

**9.00\*/9.30 - 10.45**

**11.00 – 12.15**

**12.30 – 13.45**

**14.15\* – 15.15**

**15.30 – 16.45**

\*Available for School Tours, call to confirm departure time

## A Special Place for People and Nature

As a UNESCO Biosphere, Dublin Bay is internationally recognised for its natural and cultural heritage. Dún Laoghaire-Rathdown County Council, as part of Dublin Bay Biosphere Partnership, encourages you to experience and appreciate historic Dublin Bay and its amazing wildlife. Jump onboard Dublin Bay Cruises to enjoy our unique Guided Biosphere Discovery Tours every Wednesday from April 26 - June 15 2017 as follows:

Dún Laoghaire to City Centre

City Centre to Dún Laoghaire

Dún Laoghaire to Howth

Howth roundtrip around Ireland's Eye

Howth to Dún Laoghaire

## For further information and bookings:

t: 01 901 1757

w: [www.dublinbaycruises.com](http://www.dublinbaycruises.com)

w: [www.dublinbaybiosphere.ie](http://www.dublinbaybiosphere.ie)



Tour duration: 60 – 90 minutes

Max capacity: 94 people



# **Bloomsday 2017**

*at the*

## **James Joyce Tower & Museum**

### **June 11th - 16th**

A celebration of James  
Joyce through theatre,  
music, readings & more!

Check [www.joycetower.ie](http://www.joycetower.ie) for details

**Free Admission to all events.**



**The Spring into Heritage and Summer of Heritage programme of events, are a series of Free guided tours run by the Heritage Office of Dún Laoghaire-Rathdown County Council. They are suitable for schools, students, families, historic groups and individuals interested in local history.**



[events.dlrcoco.ie](https://events.dlrcoco.ie)



Like us at

[facebook.com/dlrheritageevents](https://facebook.com/dlrheritageevents)



Follow us at

[twitter.com/dlrheritevents](https://twitter.com/dlrheritevents)



Follow us at

[instagram.com/dlrheritageevents](https://instagram.com/dlrheritageevents)

**James O'Sullivan** MIPAV MA  
Spring into Heritage  
Programme Coordinator  
Email [josullivan@dlrcoco.ie](mailto:josullivan@dlrcoco.ie)

**For enquiries**  
Tel 087 226 5013  
Email [dlrheritageevents@dlrcoco.ie](mailto:dlrheritageevents@dlrcoco.ie)

Please note if any tour is full, the guides may request that you take the next available one.

Children must be accompanied by responsible adults, with one adult per three children.